



INSTITUTO NACIONAL DE ESTATÍSTICA
STATISTICS PORTUGAL

press release

DIISTAQUE

11 November 2022

INDICES OF PRODUCTION, EMPLOYMENT AND WAGES IN CONSTRUCTION

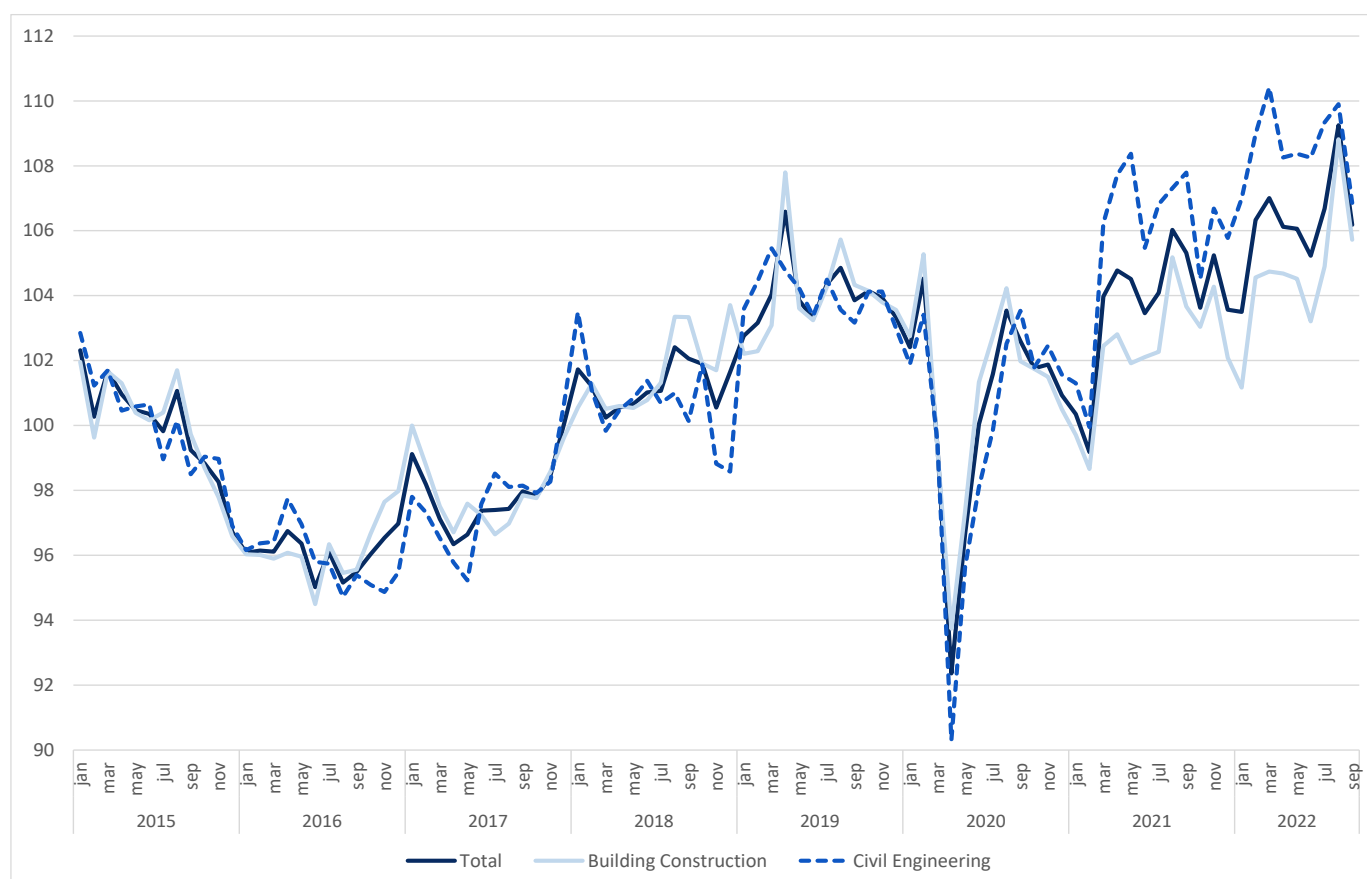
September 2022

CONSTRUCTION PRODUCTION GREW 2.1%

The index of production in construction increased 2.1% in September in year-on-year terms (3 months moving average, working days and seasonally adjusted), down by 0.3 percentage points from August.

Employment and wages and salaries grew 1.2% and 6.4% (1.4% and 5.8% in the previous month), respectively.

Figure 1. Indices of Production in Construction (2015=100)



Next press release – December 13th 2022

Indices of Production, Employment and Wages in Construction – September 2022