



INSTITUTO NACIONAL DE ESTATÍSTICA
STATISTICS PORTUGAL

press release

DIISTAQUE

December 13th 2022

INDICES OF PRODUCTION, EMPLOYMENT AND WAGES IN CONSTRUCTION

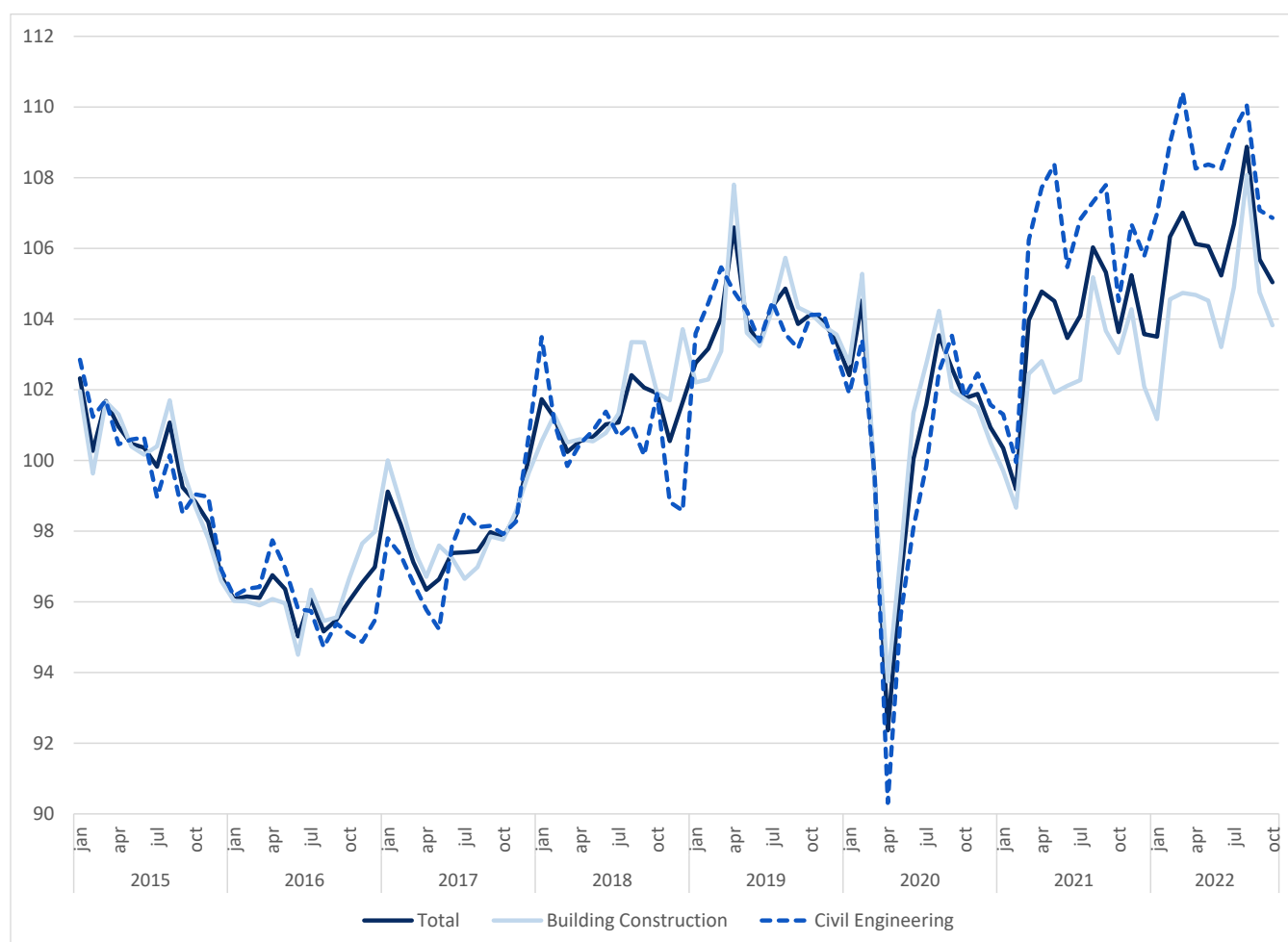
October 2022

CONSTRUCTION PRODUCTION SLOWED DOWN TO 1.5%

The index of production in construction increased 1.5% in September in year-on-year terms (3 months moving average, working days and seasonally adjusted), down by 0.3 percentage points from September.

Employment and wages and salaries grew 2.0% and 4.6% (1.1% and 5.9% in the previous month), respectively.

Figure 1. Indices of Production in Construction (2015=100)



Next press release – January 12th 2023

Indices of Production, Employment and Wages in Construction – October 2022