

Guiding principles of Social Economy



People first



Free membership



Democratic control



Conciliation of interests



Solidarity



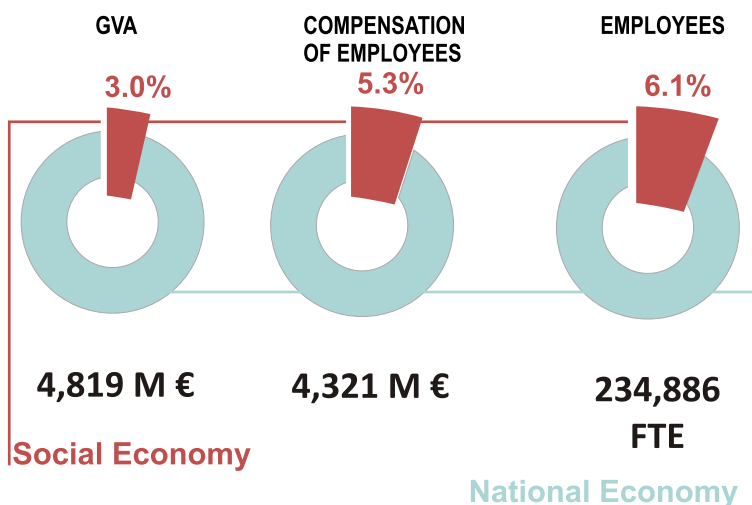
Autonomous management



Surplus linked to SE

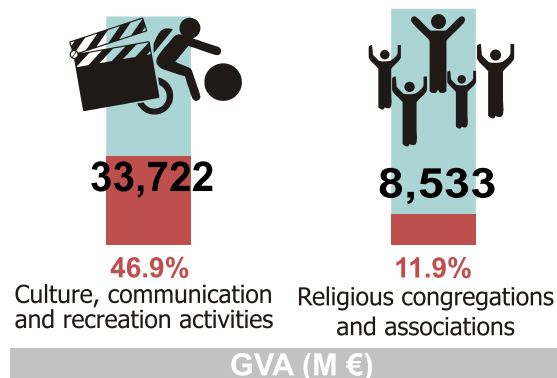
## MAIN INDICATORS

### WEIGHT OF SOCIAL ECONOMY IN NATIONAL ECONOMY

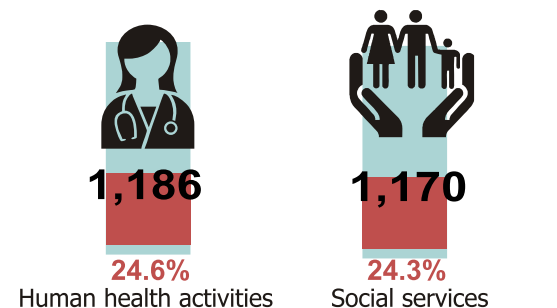


## MAIN ACTIVITIES

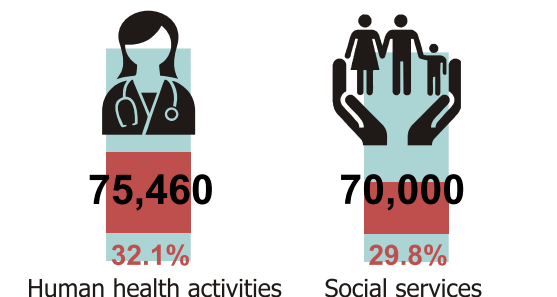
### No.



### GVA (M €)

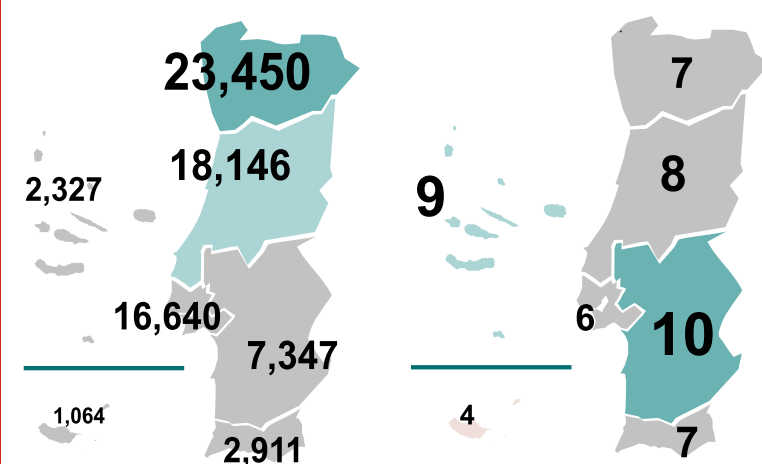


### EMPLOYEES (FTE)



## TERRITORIAL ANALYSIS

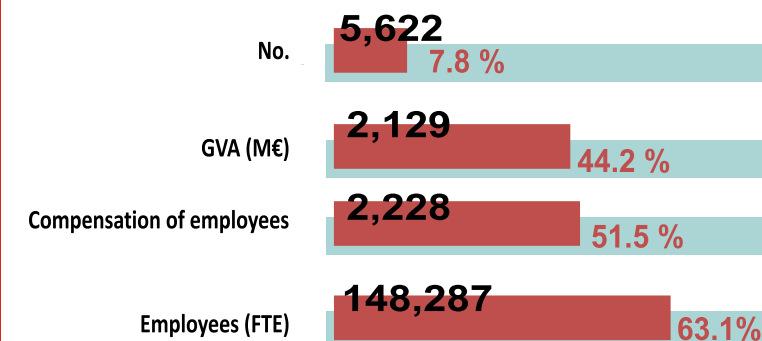
### No. / 1 000 Residents



## GROUPS OF ENTITIES

	No.	GVA (M€)	Employees (FTE)
Cooperatives	2,343	604	24,402
Mutual Associations	97	388	4,842
Holy Houses of Mercy	387	597	39,445
Foundations	619	332	14,113
Associations with Altruistic Goals	66,761	2,897	151,779
Community and Self Management Subsectors	1,678	1	305
<b>Total of SE</b>	<b>71,885</b>	<b>4,819</b>	<b>234,886</b>

## IPSS IN SOCIAL ECONOMY



IPSS  
SOCIAL ECONOMY