

# ECO NOMIC ACTI VITY



20|18



INSTITUTO NACIONAL DE ESTATÍSTICA  
STATISTICS PORTUGAL

## Economic Activity - 2018

### EDITOR

Instituto Nacional de Estatística, I.P.  
Av. António José de Almeida  
1000-043 Lisboa, Portugal  
Phone : +351 218 426 100  
Fax: +351 218 454 084

[www.ine.pt](http://www.ine.pt)

PRESIDENT OF THE BOARD  
Francisco Lima

### DESIGN

Statistics Portugal

### PERIODICITY

Annual

ISSN 1646-2599

ISBN 978-989-25-0498-8

For details on concepts, classifications and  
methodological notes, please consult  
our metadata on [www.ine.pt](http://www.ine.pt)



Customer | support

**218 440 695**

© INE, I.P., Lisboa • Portugal, 2019

Statistical data made available by Statistics Portugal might be used according to Creative Commons Attribution 4.0 International (CC BY 4.0), however the source of the information must be clearly identified.



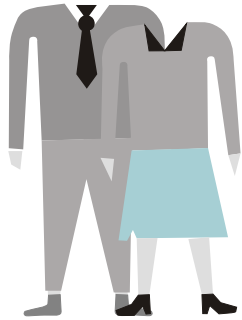


# IN DEX

NATIONAL ACCOUNTS	05
PRICES	06
LABOUR MARKET	07
ENTERPRISES	09
INNOVATION AND KNOWLEDGE	10
ENVIRONMENT	12

---

AGRICULTURE	13
FISHERY	14
INDUSTRY AND ENERGY	16
CONSTRUCTION AND HOUSING	17
TRANSPORTS	18
TOURISM	20
INTERNATIONAL TRADE	21



**5 232.6 thousands**

Active population

More 88.4 thousands men than women



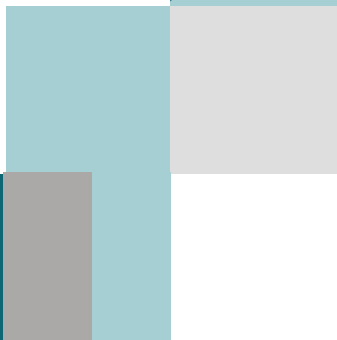
**€ 19 827**

GDP per capita

+4.2% than in 2017



**NATIONAL  
ACCOUNTS**



**LABOUR  
MARKET**

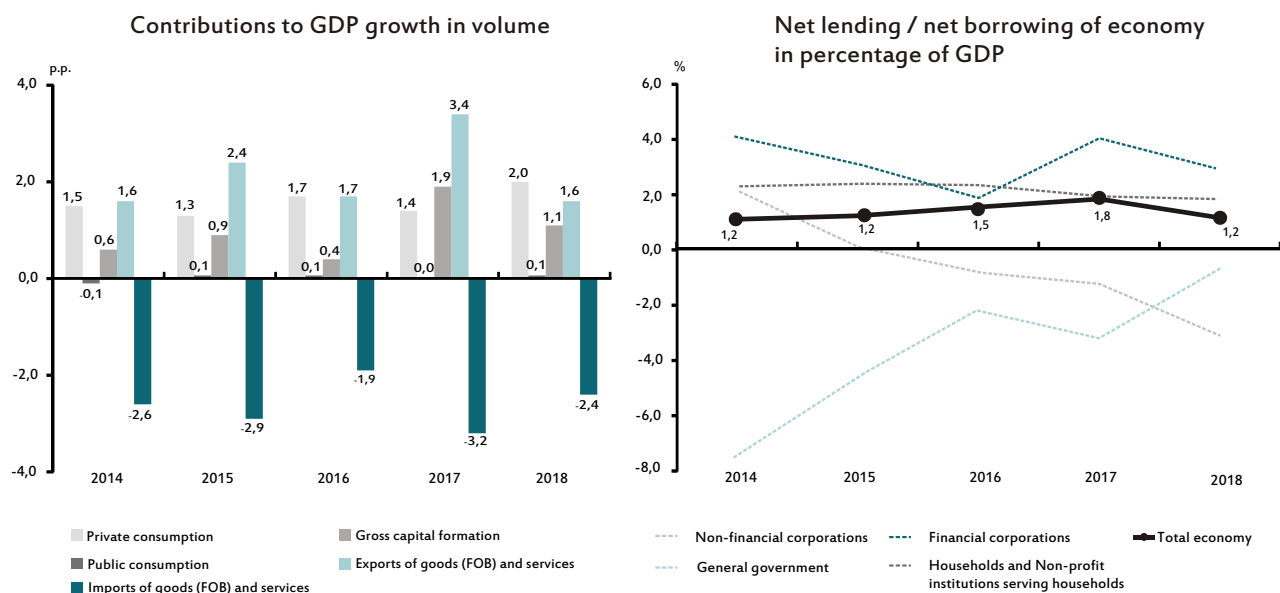


**PRICES**



**6.5%**

Gross saving rate  
of households  
and NPISH



Statistics Portugal, National Accounts

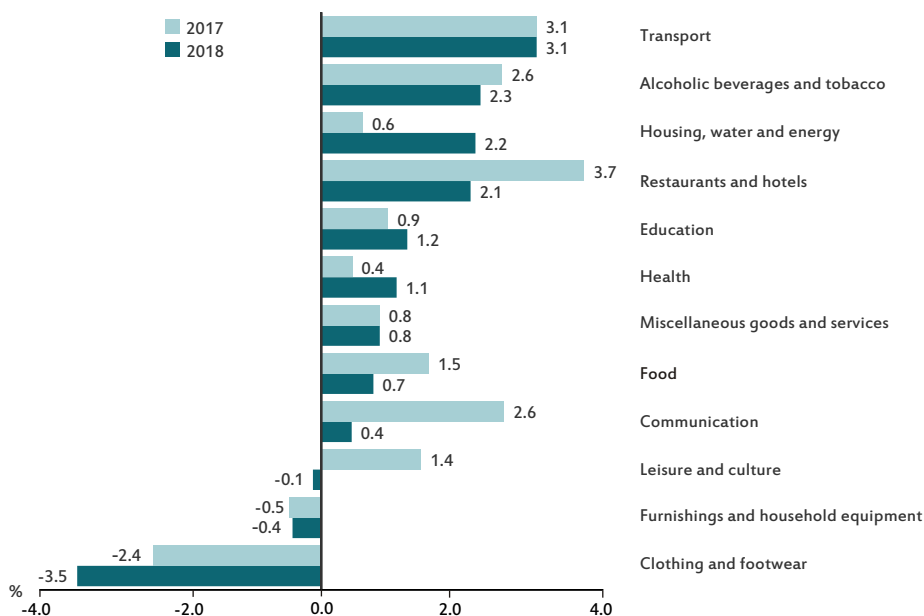
**The gross domestic product (GDP) increased by 2.4% in volume, down by 1.1 percentage points (p.p.) compared to the previous year. In nominal terms amounted to € 203.9 billion**

#### Main economic indicators

	2014	2015	2016	2017	2018
<b>Gross domestic product (GDP) at market prices expenditure approach (% change rate, volume)</b>					
GDP	0.8	1.8	2.0	3.5	2.4
Private consumption	-1.0	2.4	2.0	2.6	2.1
Public consumption	-0.6	0.8	0.8	0.2	0.9
Gross capital formation	4.1	5.9	2.5	11.9	6.2
Exports of goods (FOB) and services	4.3	6.3	4.4	8.4	3.8
Imports of goods (FOB) and services	7.9	8.0	5.0	8.1	5.8
<b>Implicit deflators (% - change rate)</b>					
GDP	0.7	2.0	1.7	1.5	1.6
Private consumption	0.2	0.9	1.0	1.6	1.3
<b>Terms of trade (% - change rate)</b>					
	1.0	3.2	1.6	-0.8	-0.3
<b>GDP per capita (Euro - current prices)</b>					
	16 638	17 350	18 061	19 023	19 827
<b>Gross national income per capita (Euro - current prices)</b>					
	16 298	16 885	17 622	18 577	19 391
<b>Gross disposable income of households and NPISH (% - current prices)</b>					
	-0.3	3.4	3.8	3.1	4.4
<b>Gross saving rate of households and NPISH (% of Disposable income)</b>					
	6.8	6.9	7.0	6.6	6.5
<b>Labour productivity per person employed (FTE) (% - change rate)</b>					
	-1.3	-0.4	-0.6	-0.1	0.0
<b>Labour cost (% - change rate)</b>					
Compensation of employees	0.2	2.7	3.6	6.0	5.4
Unit labour cost (nominal)	-1.2	-0.1	0.8	2.1	2.4

Statistics Portugal, National Accounts

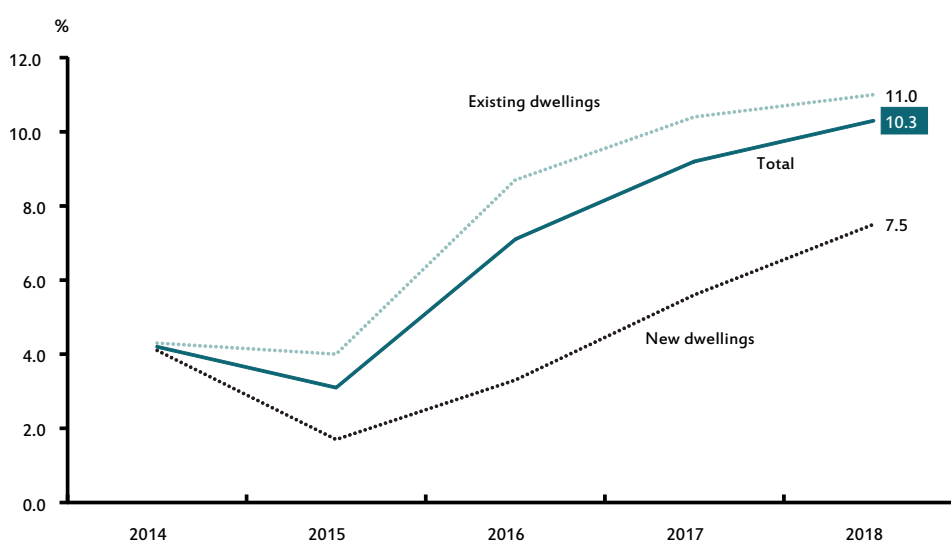
### Annual average rate of change of the consumer price index (CPI), by classes of expenditure



Statistics Portugal, Consumer Price Index (Base 2012).

**The consumer price index (CPI) recorded an annual average rate of change of 1.0%, down by 0.4 p.p. than in 2017**

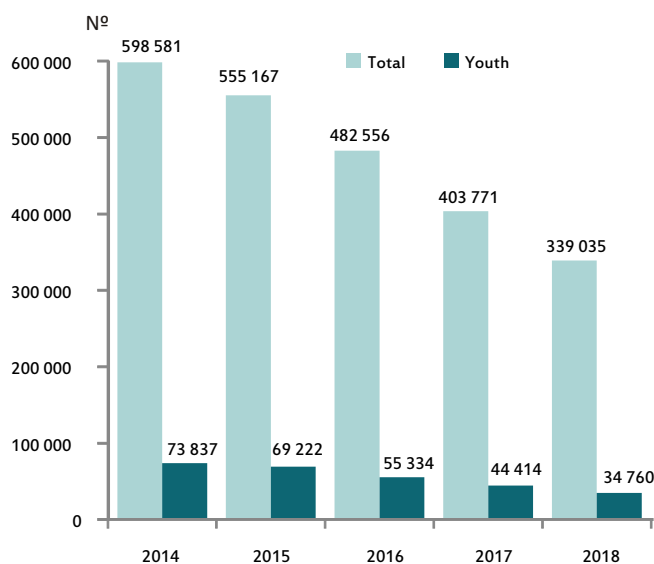
### Annual average rate of change of the house price index (HPI)



Statistics Portugal, House Price Index (Base 2015)

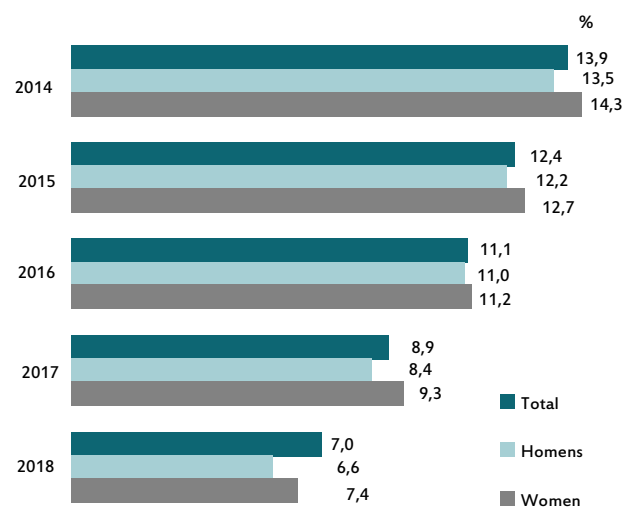
## The youth unemployment rate stood at 20.3% (-3.6 p.p. than in 2017)

Unemployed population (total and youth)



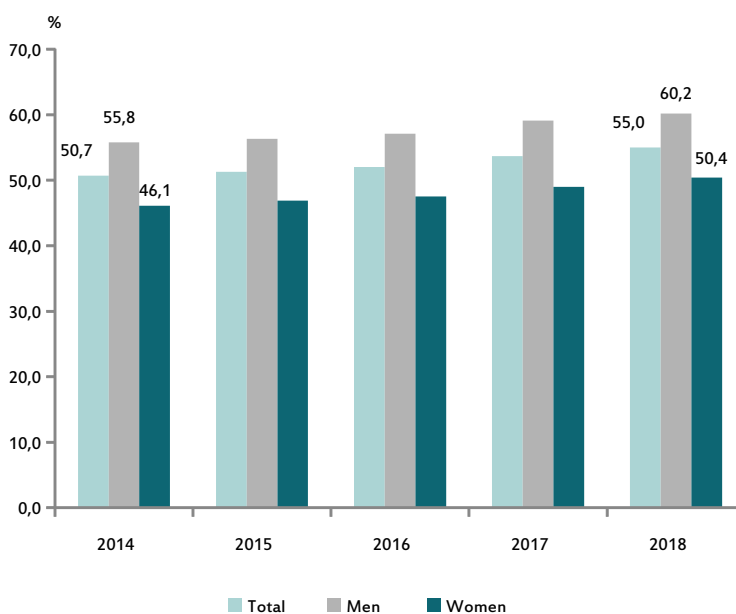
IEFP, Instituto do Emprego e Formação Profissional

Unemployment rate (total and by sex)

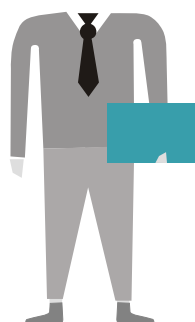
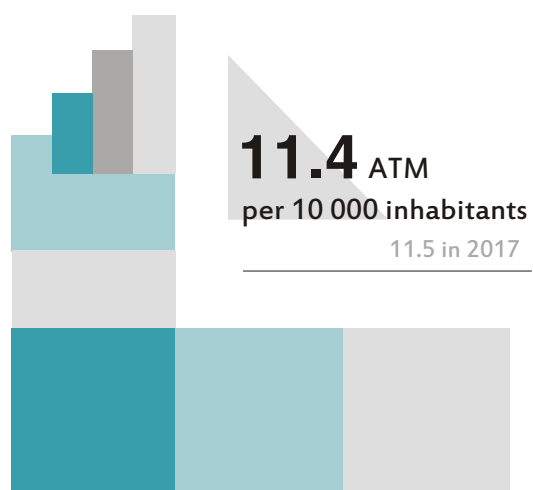


Statistics Portugal, Labour Force Survey

Employment rate (total and by sex)



Statistics Portugal, Labour Force Survey



The financial autonomy  
of non-financial  
companies stood at

**0.36**  
0.35 in 2017



ENTERPRISES

INNOVATION  
AND  
KNOWLEDGE



**67%**

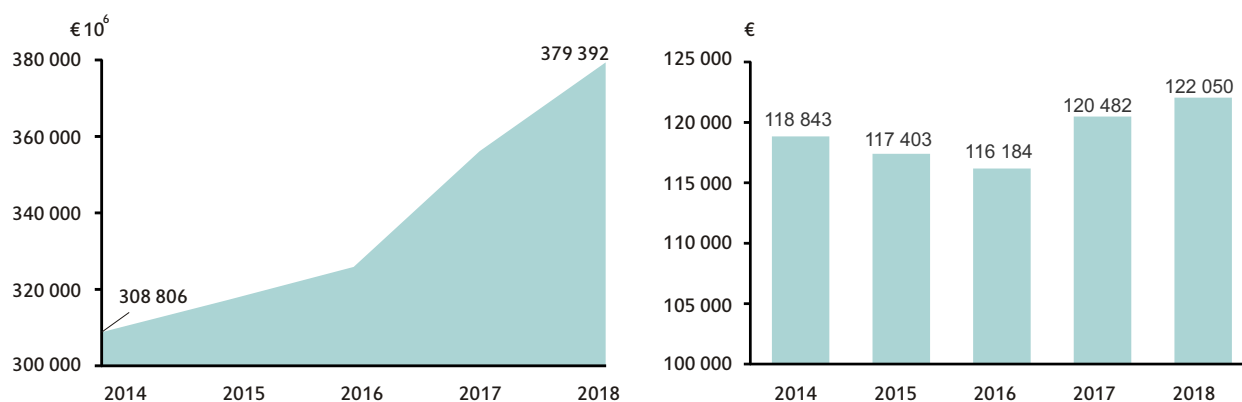
of enterprises with 10 or more persons employed  
had access to the internet using mobile broadband

-3.0 p.p. than in 2017



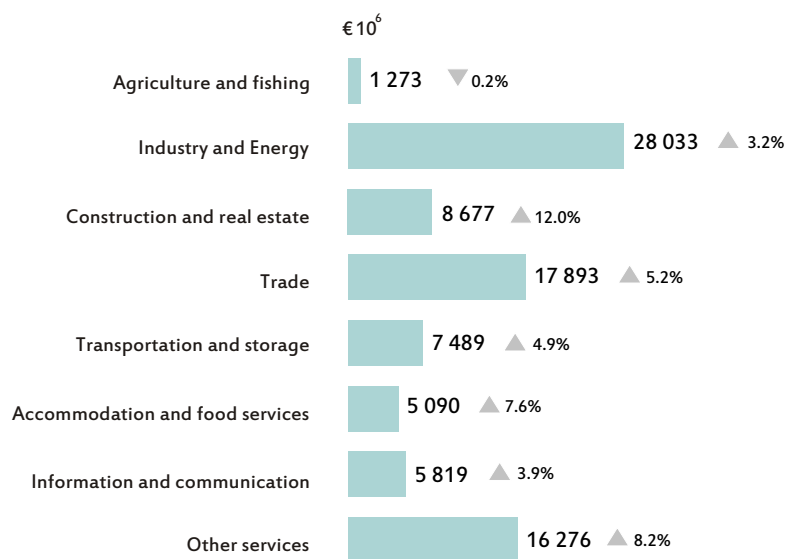
**There were 410 405 non-financial companies in activity (+3.9% than in 2017) with 3 108 506 persons employed (+5.2% compared to 2017)**

Turnover and turnover by person employed of non-financial companies



Statistics Portugal, Integrated Business Accounts System

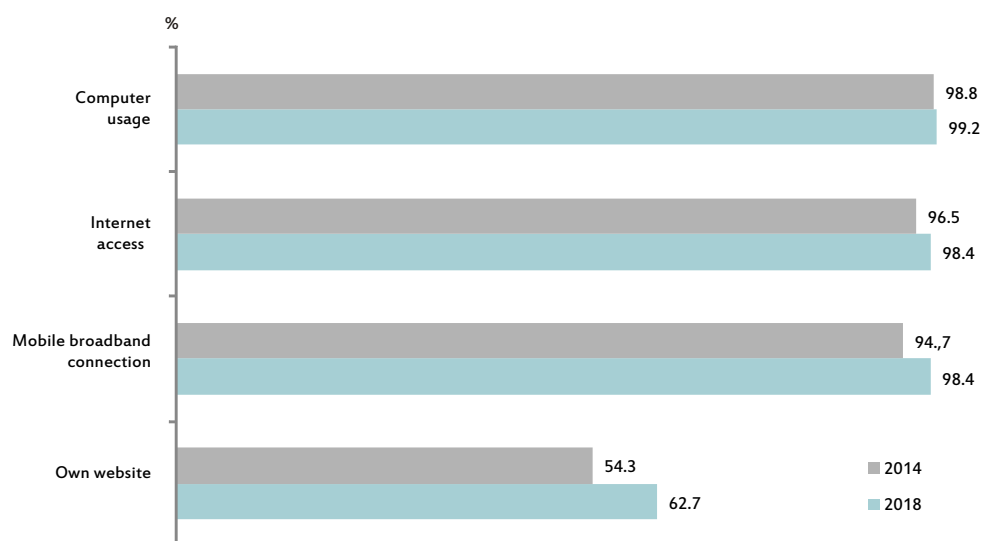
Breakdown of GVA by sector of activity, 2018



Statistics Portugal, Integrated Business Accounts System

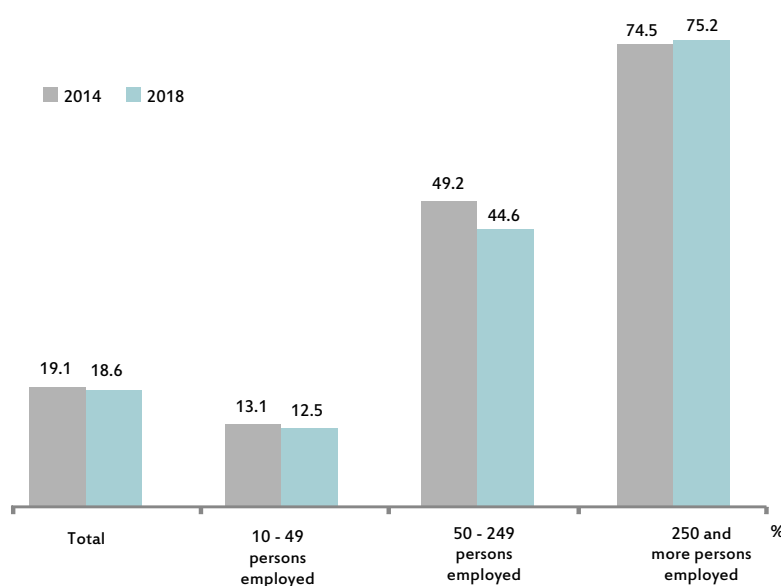
The share of enterprises with own website, is higher in the large enterprises (250 and more persons employed) corresponding to 96%, than in the small ones (10 to 49 persons employed) with only 58%.

Information society indicators of enterprises with 10 and more persons employed

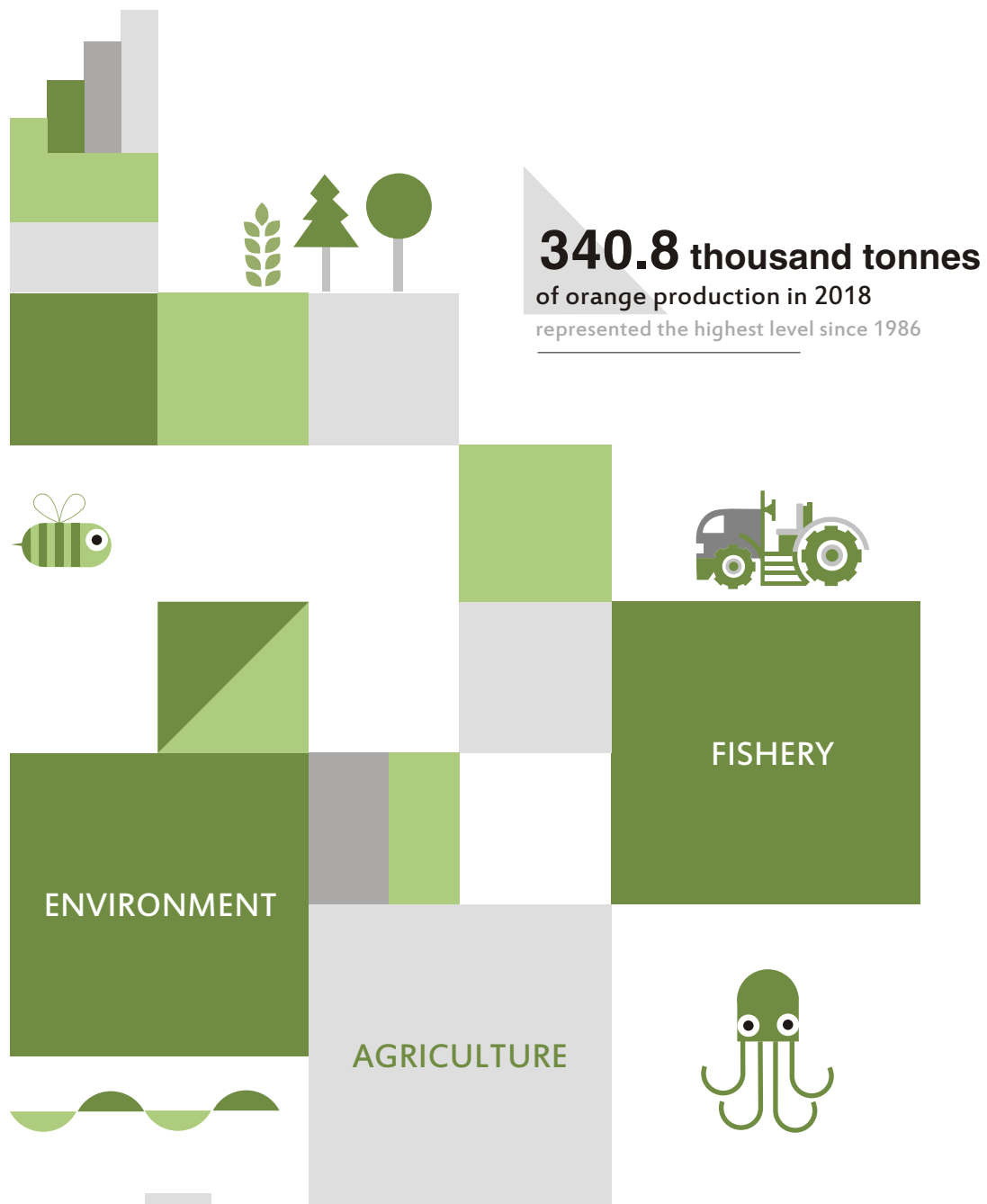


Statistics Portugal, Survey on ICT Usage in Enterprises

Proportion of enterprises with 10 and more persons employed that have employees with information and communication technology skills (ICT) by employment size class



Statistics Portugal, Survey on ICT Usage in Enterprises



Annual average price of fresh or refrigerated  
fish landed stood at **€ 2.20/kg**

€ 2.23/kg in 2017

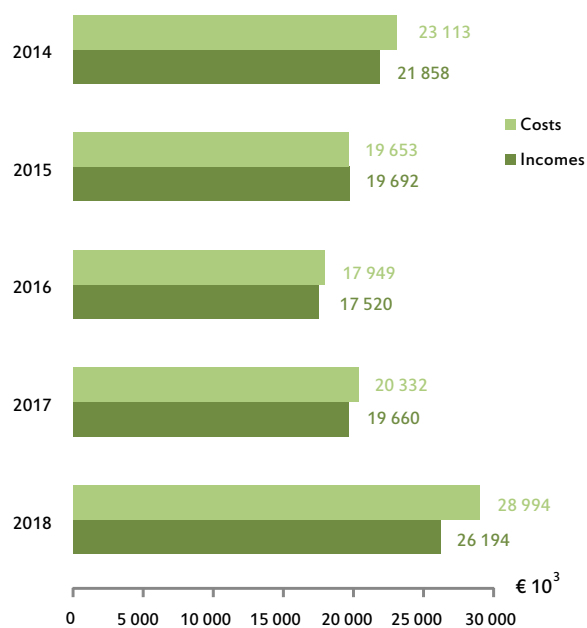
### Non-governmental organizations for environment and members



Statistics Portugal, Non-governmental Environment Organizations Survey

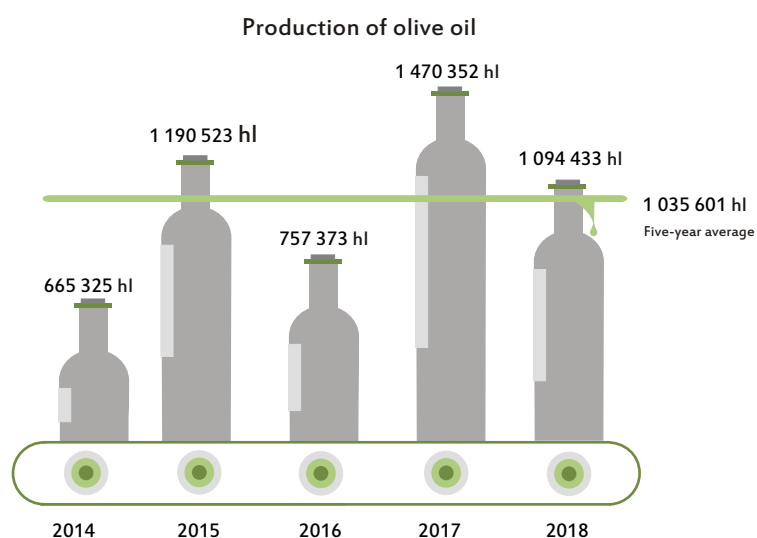
**The non-governmental organizations for environment invested € 1 005 thousand**  
(+28.8% than in 2017 but -12.4% compared to 2014)

### Costs and incomes of Non-governmental organizations for environment

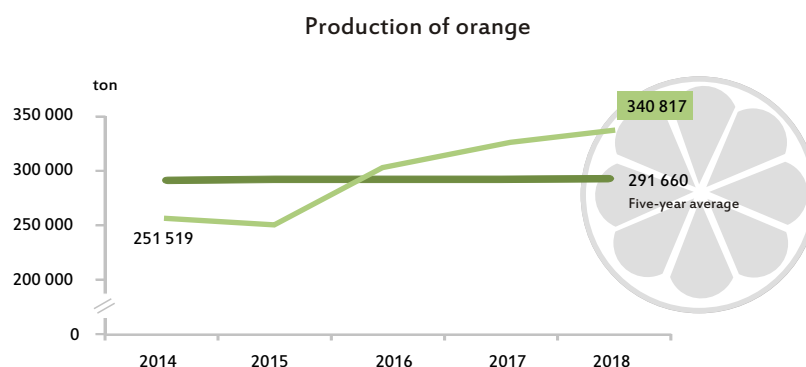


Statistics Portugal, Non-governmental Environment Organizations Survey

**For the second consecutive year, the production of olive oil was above 1.0 million hectoliters**

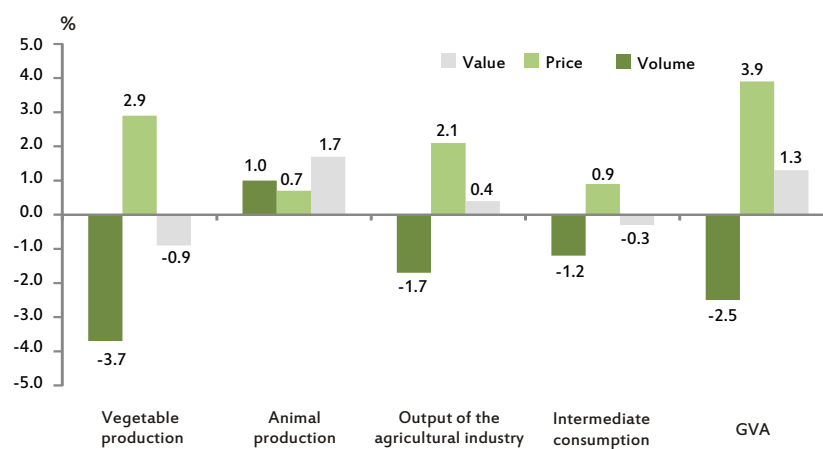


Statistics Portugal, Vegetable Production Statistics



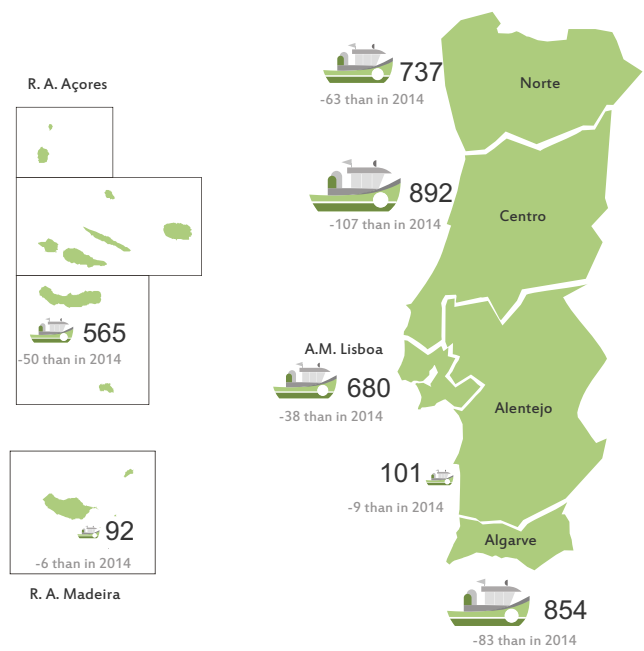
Statistics Portugal, Vegetable Production Statistics

**Output, intermediate consumption and GVA (annual change rate in volume, prices and value)**



Statistics Portugal, Economic Accounts for Agriculture

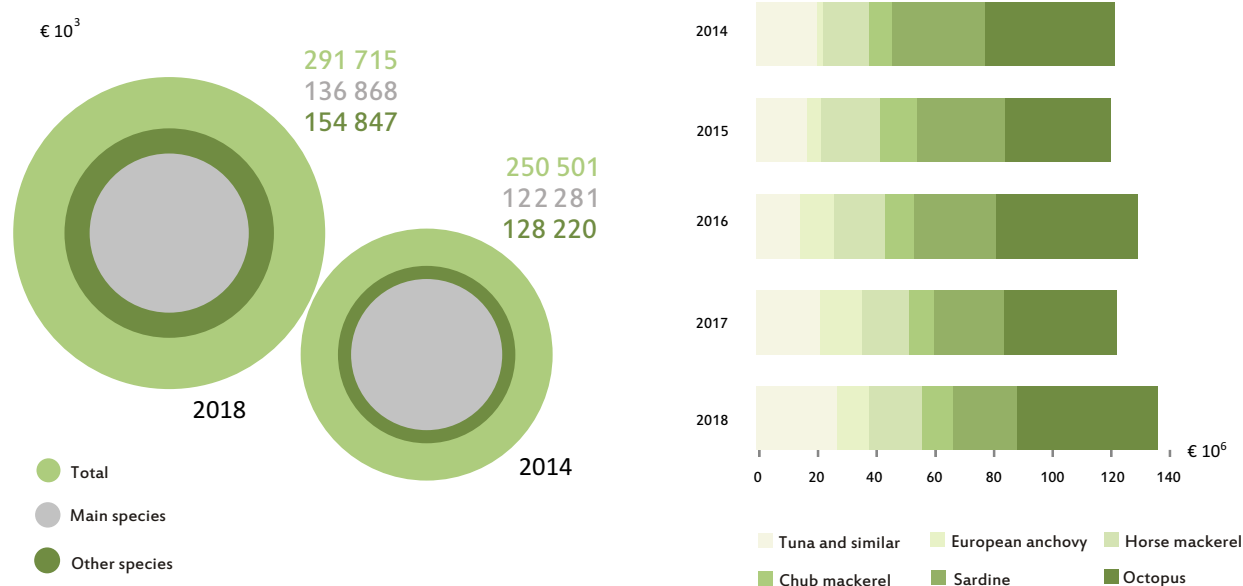
Fishing licensed vessels with motor of national fleet by NUTS 2



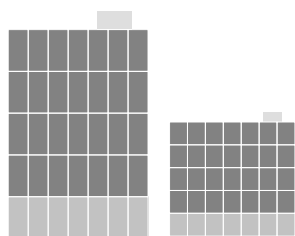
DGRM, Fish landed in national ports

The average price of the octopus reached the highest level over the last 2 decades and the one that has the highest first sale value over the last 5 years

Sale value of the main species at the wholesale fishmarket



DGRM, DRP RAA, DRP RAM, Fish landed in national ports

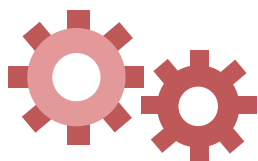
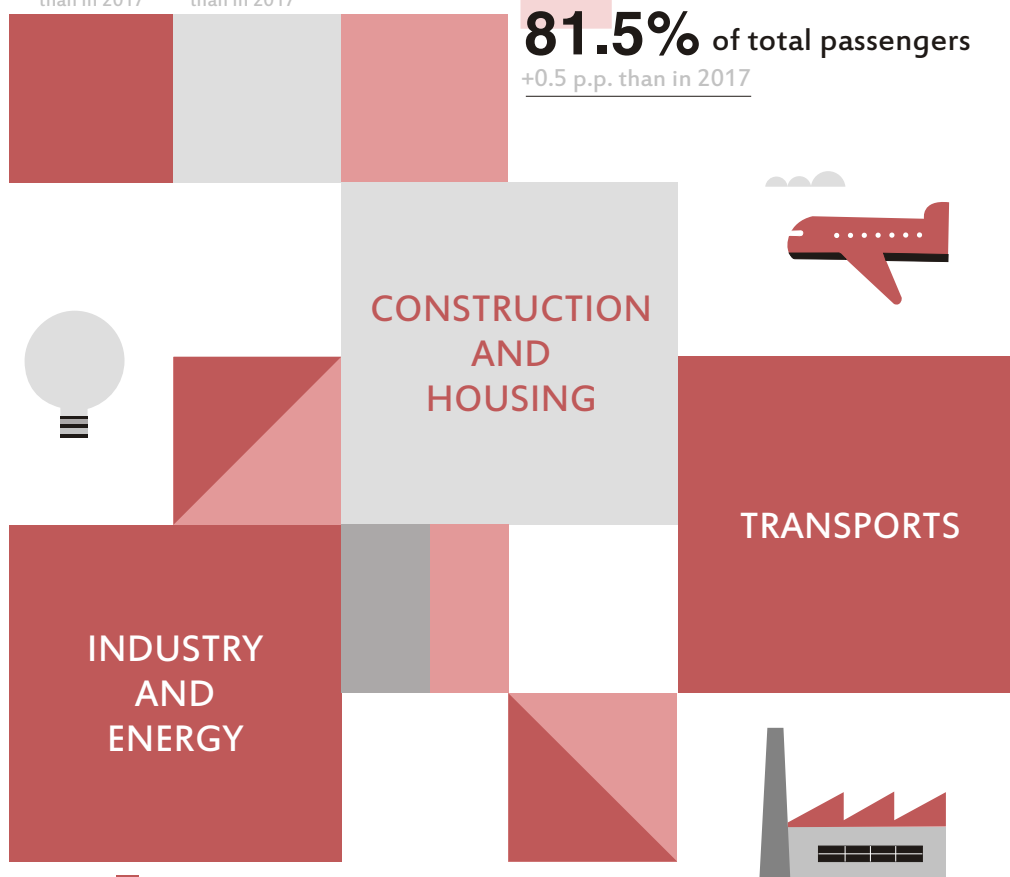


22 223  
licensed  
buildings  
+17.6%  
than in 2017

13 483  
completed  
buildings  
+19.0%  
than in 2017

The international passenger traffic  
increased by 7.3% compared  
to 2017 and covered

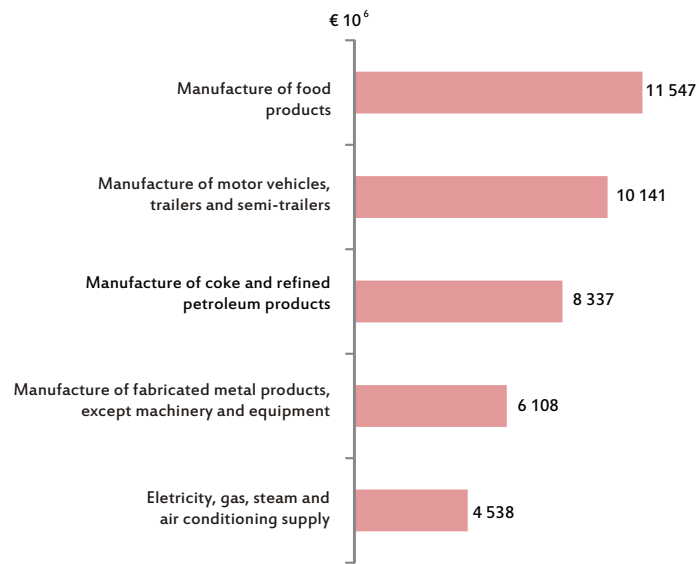
**81.5%** of total passengers  
+0.5 p.p. than in 2017



Provision of services  
in the industry stood at

**€ 3.2 billion**  
+4,3% than in 2017

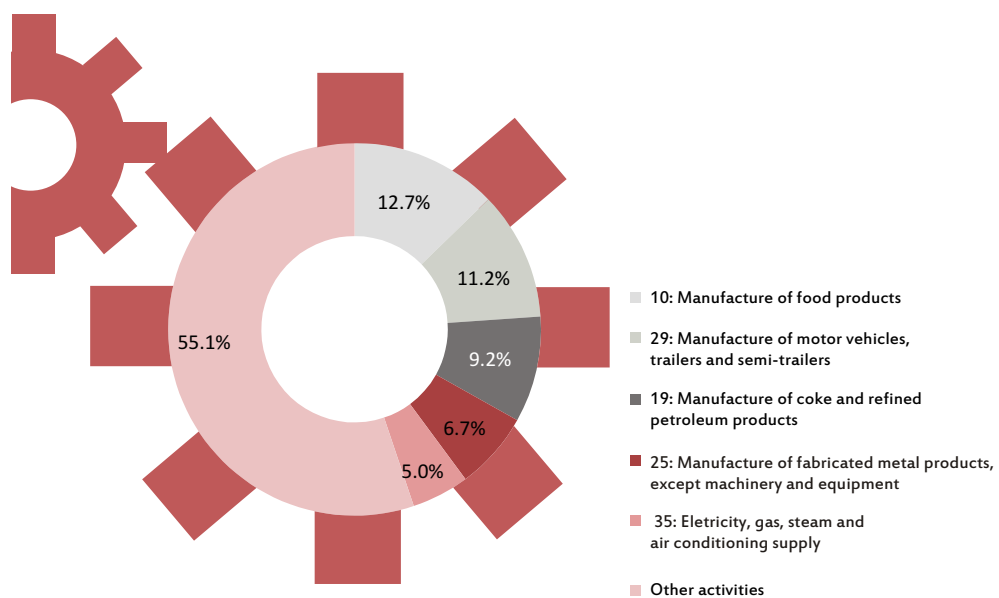
Breakdown of sales of industrial products (divisions of CAE Rev.3), 2018



Statistics Portugal, Annual Survey on Industrial Production (Prodcom Survey)

**Total sales of products and provision of services in the industry amounting to € 90.7 billion increasing by 5.9% compared to the previous year (+9.3% in 2017)**

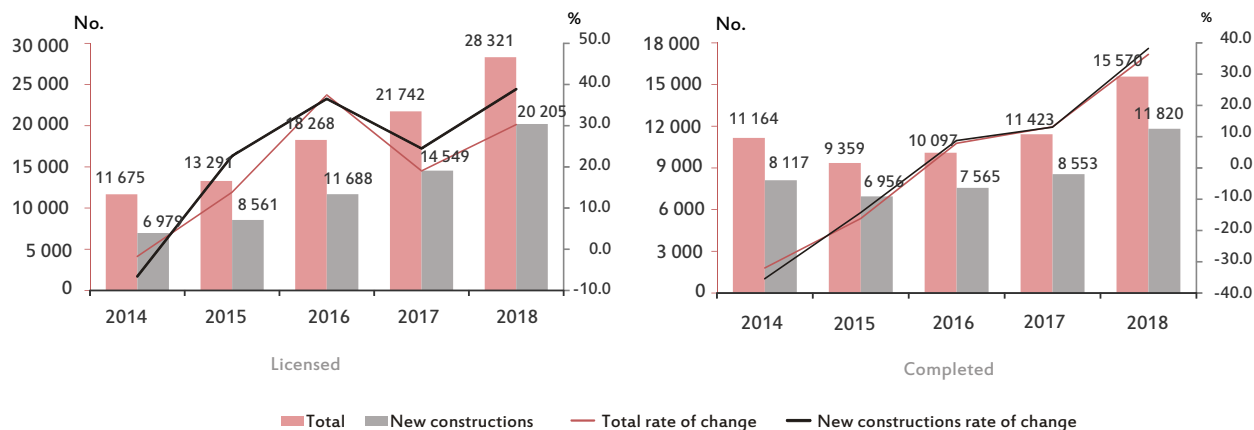
Main sales of industrial products (divisions of CAE Rev.3), 2018



Statistics Portugal, Annual Survey on Industrial Production (Prodcom Survey)

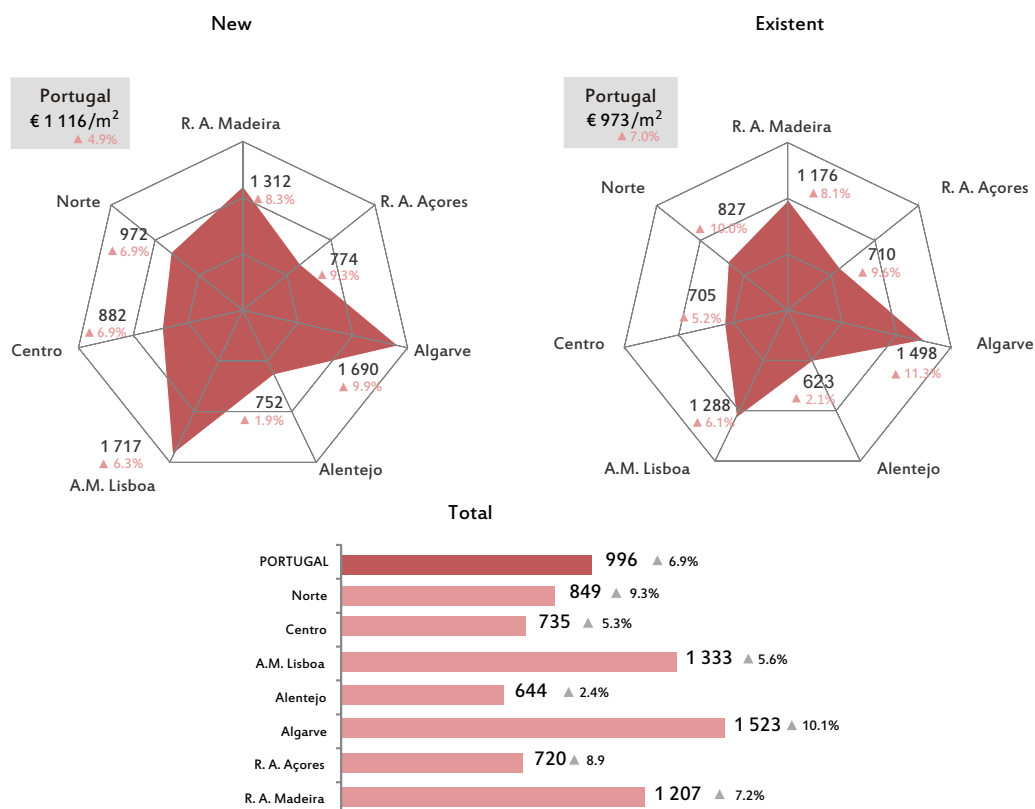


## Licensed and completed dwellings



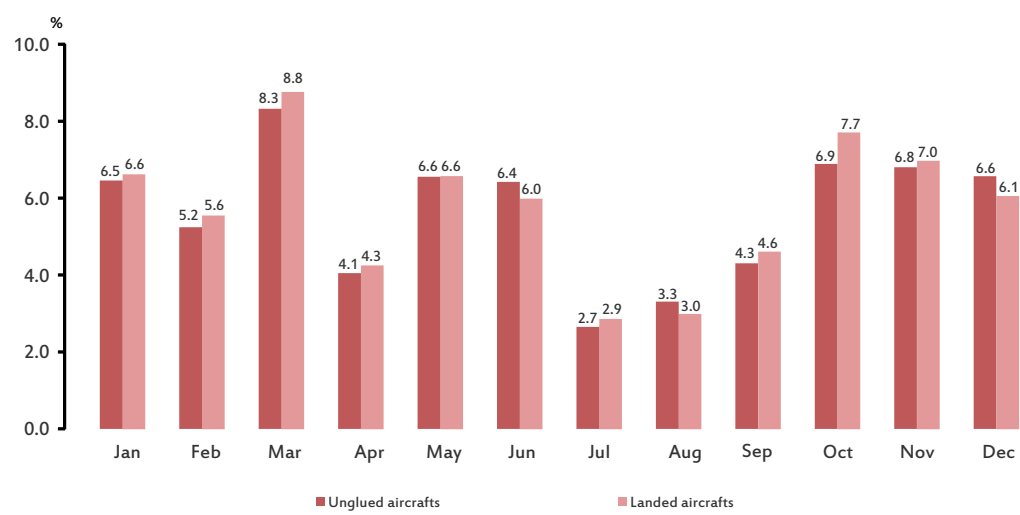
Statistics Portugal, Projects of Building Constructions and Demolitions Survey

In 2018, there were around 3.6 million buildings for conventional family housing and 6.0 million conventional family dwellings, which represents an increase of 0.2% in both, buildings and family dwellings, compared to the previous year

Median value per m<sup>2</sup> of dwellings sales by NUTS 2, 2018

Statistics Portugal, Statistics of Housing Prices at Local Level

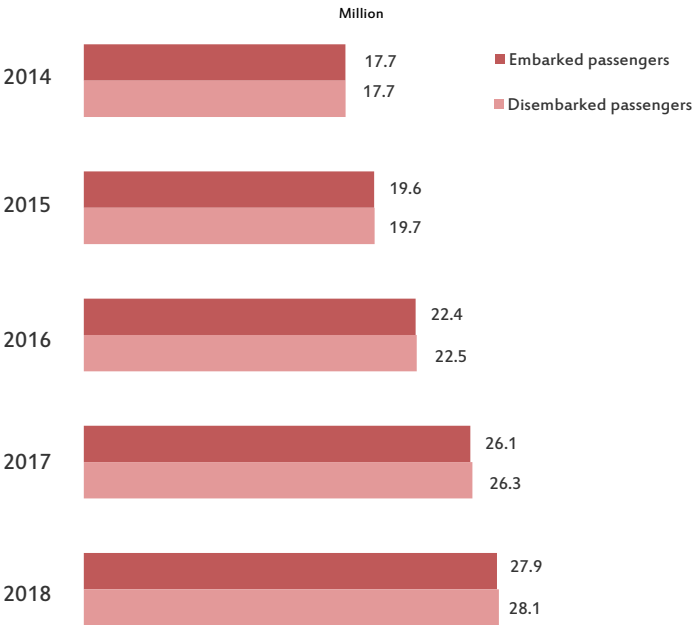
Unglued and landed aircrafts in the national airports ( month-on-month growth rate),2018



Statistics Portugal, Airports Survey; ANAC and ANA

In 2018, there was an increase in air traffic in terms of passengers (+6.8%), but slowing down compared to the previous year (+16.2% in 2017)

Embarked and disembarked passengers in the national airports

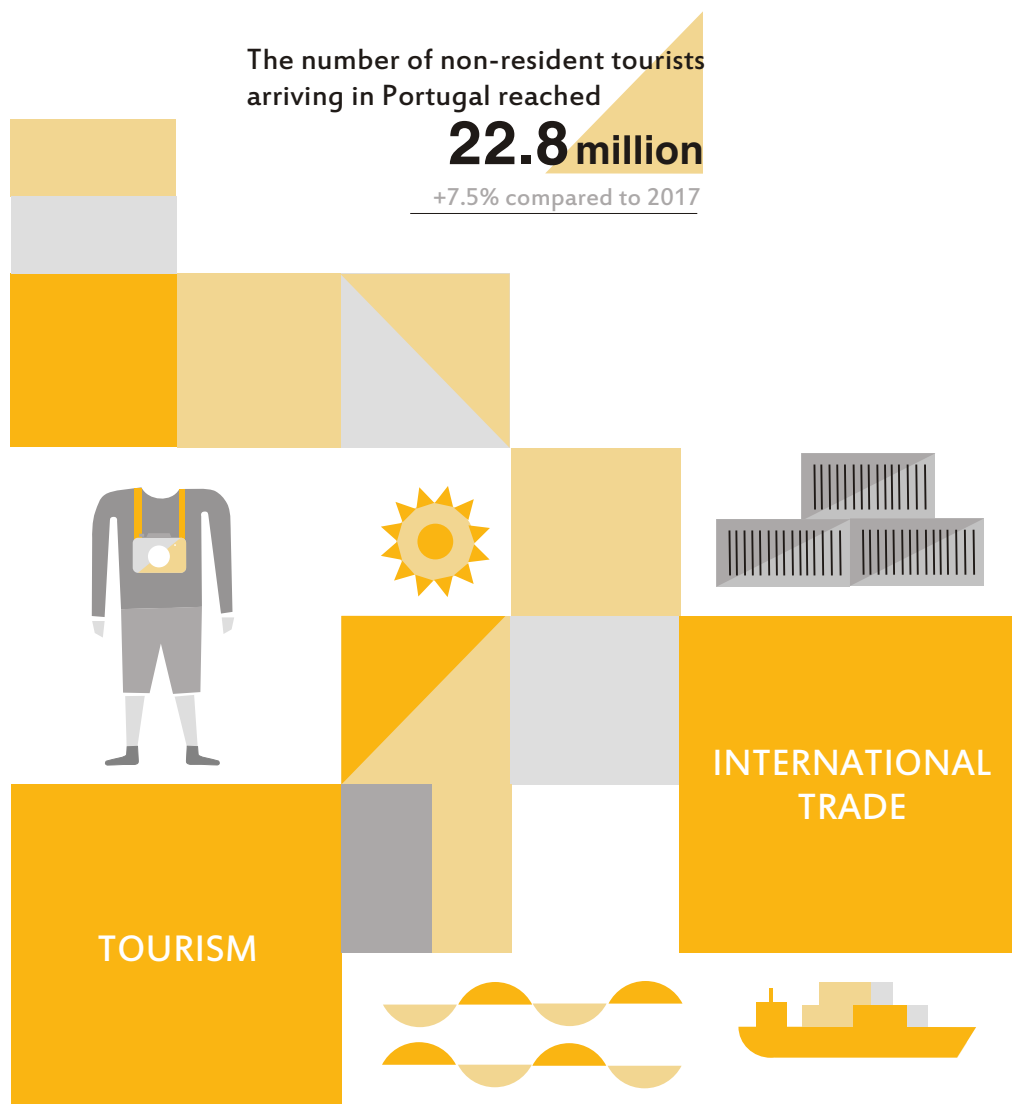


Statistics Portugal, Airports Survey; ANAC and ANA

The number of non-resident tourists  
arriving in Portugal reached

**22.8 million**

+7.5% compared to 2017



The trade balance of goods reached

**-17 557 million Euro**

representing an increase of the trade deficit in 2 886 million Euro

Global results for the tourism accommodation sector

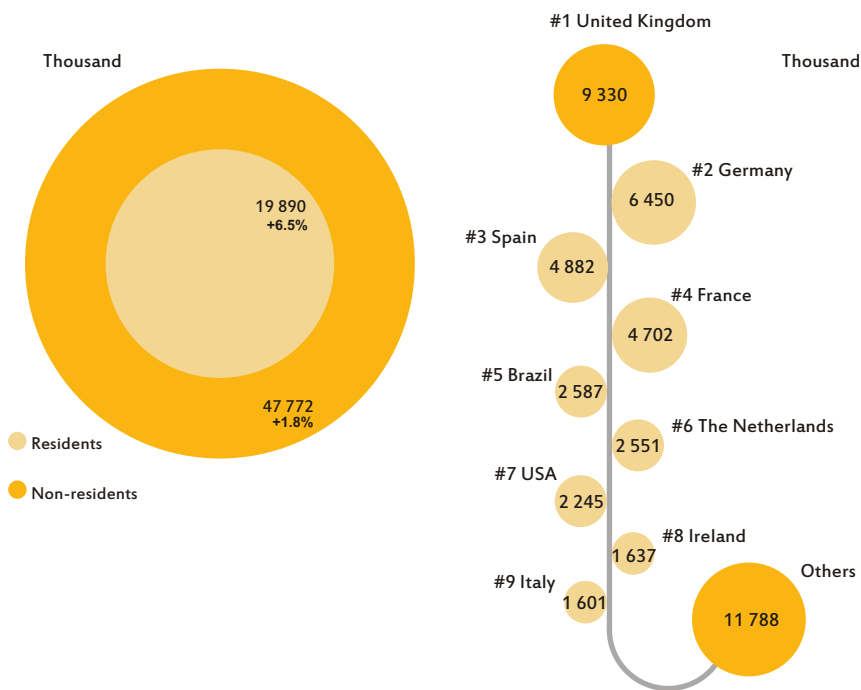
Indicators	2017 <sup>1</sup>	2018	Tvh
Establishments (No.)	5 840	6 868	14.8%
Accommodation capacity (No.)	402 832	423 152	4.3%
Guests (10 <sup>3</sup> )	23 953.8	25 249.9	5.1%
Overnight stays (10 <sup>3</sup> )	65 385.2	67 662.1	3.1%
Average stay (No. of nights)	2.72	2.67	-2.0%
Net bed occupancy rate (%)	48.9	47.8	-0.9 p.p.
Total revenue (€10 <sup>6</sup> )	3 681.2	3 986.6	8.1%
Revenue from accommodation (€10 <sup>6</sup> )	2 738.0	2 993.2	9.1%
RevPAR (Average revenue per available room) (€)	46.2	47.8	3.8%

<sup>1</sup> Data for 2017 do not included R. A. Açores Local accommodation

Statistics Portugal, Guest Stays and other Data on Hotel Activity Survey

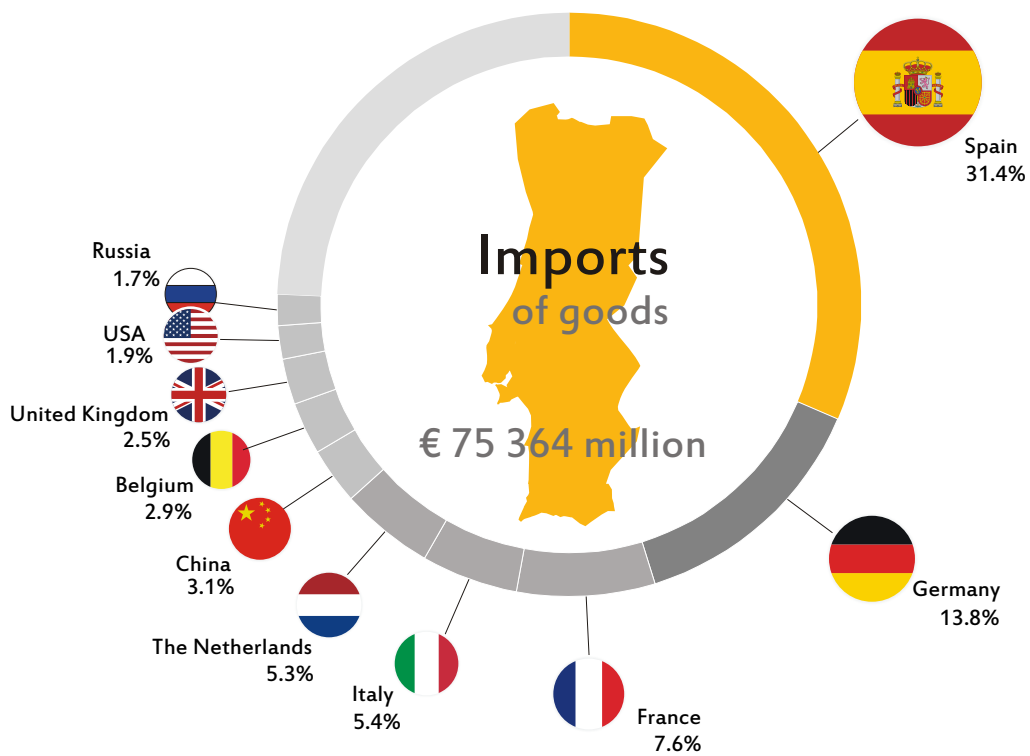
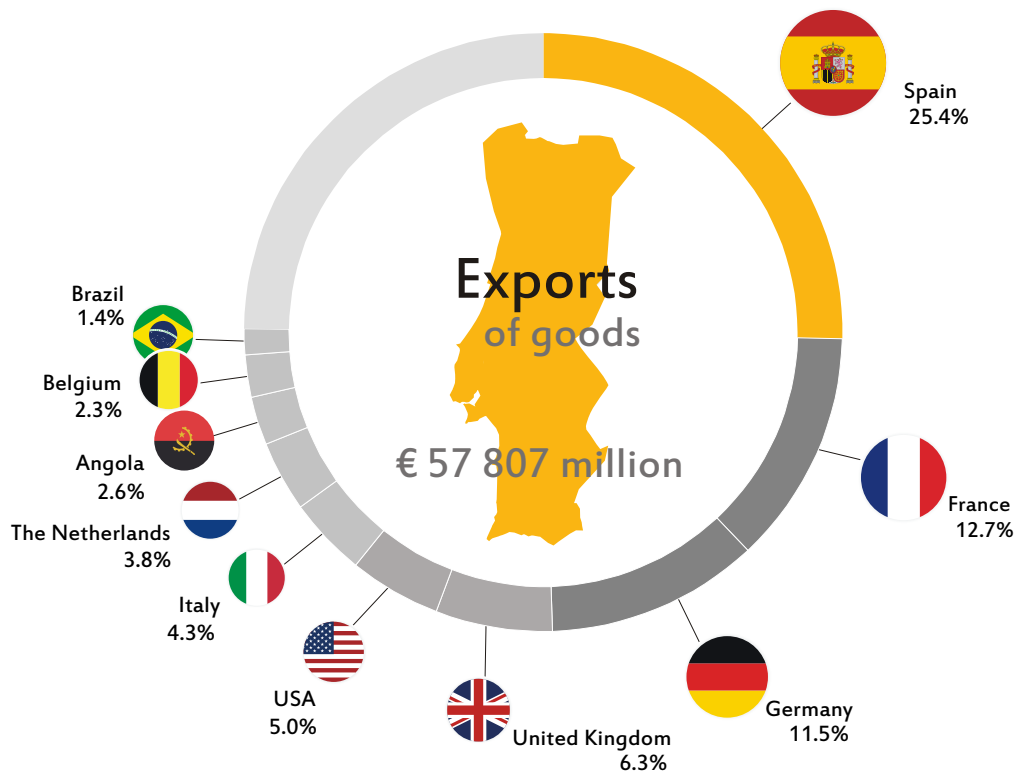
Hotel activity concentrated 83.6% of overnight stays, followed by Local accommodation corresponding to 13.8%

Overnight stays by main inbound markets, 2018



Statistics Portugal, Guest Stays and other Data on Hotel Activity Survey

Exports and Imports of goods by the main countries of destination/origin, 2018





THE MISSION OF STATISTICS PORTUGAL IS TO PRODUCE, IN AN INDEPENDENT MANNER, HIGH-QUALITY OFFICIAL STATISTICAL INFORMATION, RELEVANT FOR THE SOCIETY, WHILE PROMOTING THE COORDINATION, THE ANALYSIS, THE INNOVATION AND THE DISSEMINATION OF THE NATIONAL STATISTICAL ACTIVITY AND ENSURING INTEGRATED DATA STORAGE.

[www.ine.pt](http://www.ine.pt)

ISBN 978-989-25-0498-8

The data available refer to 2 October 2019