

Transport Activities

May 2020 – Air Transport Flash Statistics

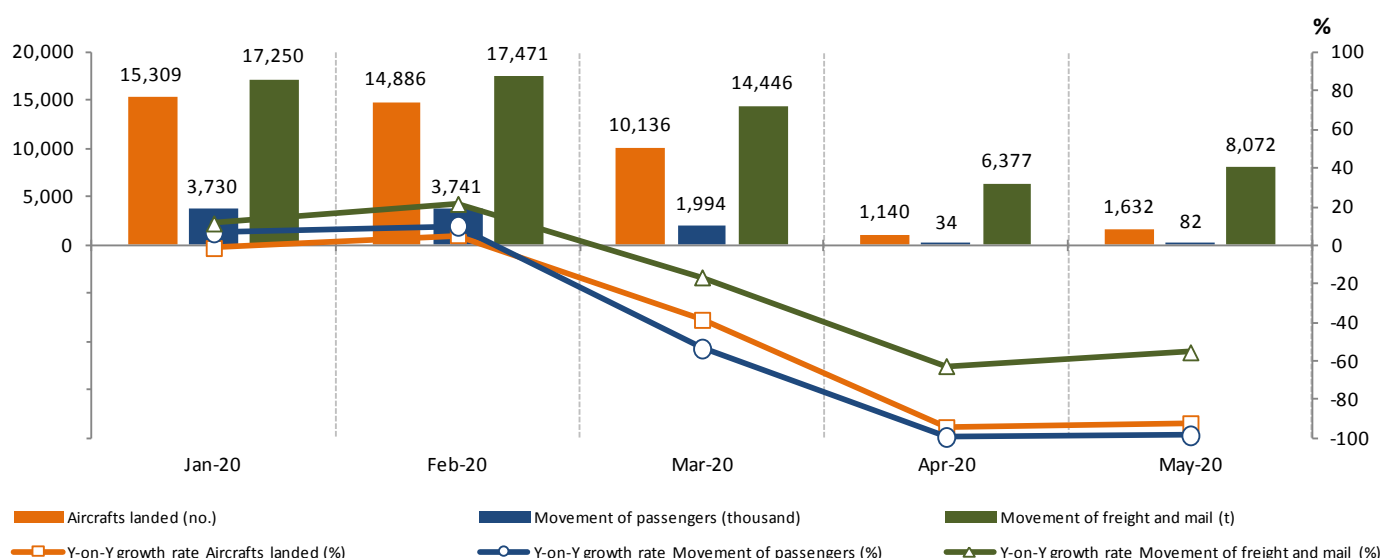
Movement at national airports in May with reduced recovery compared to the previous month

In May 2020 there was a movement of 82.1 thousand passengers at national airports, representing a decrease of 98.5% ¹ (-99.4% in April). The movement of freight and mail totalled 8.1 thousand tonnes, corresponding to a decrease of 55.5% (-62.6% in April)

Statistics Portugal initiates in this Press Release the disclosure of monthly information on statistics of the Transport Activities - Air Transport, anticipating the previously quarterly disclosure.

In May 2020, 1.6 thousand commercial aircrafts landed at national airports, representing a year-on-year growth rate of -92.3% (-94.3% in April and -38.6% in March). There was a movement of 82.1 thousand passengers (embarked, disembarked and direct transits), representing a year-on-year growth rate of -98.5% (-99.4% in April and -53.5% in March). The movement of freight and mail at national airports totalled 8.1 thousand tonnes, corresponding to a decrease of 55.5% (-62.6% in April and -16.6% in March).

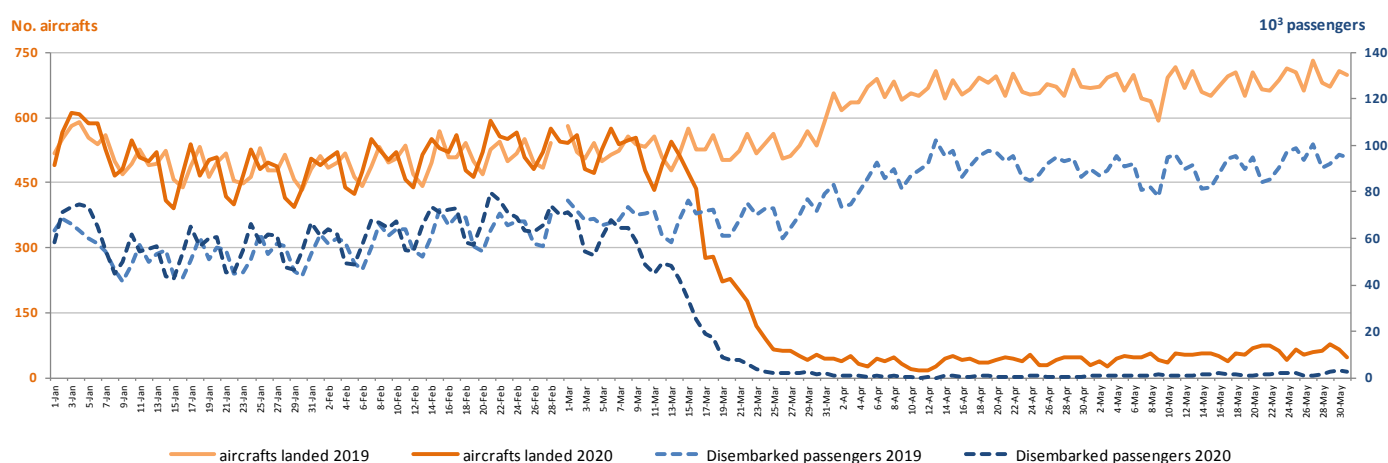
Figure 1 – Aircrafts landed, passengers and freight/mail movement at national airports



¹ Unless stated otherwise, the rates of change presented in this press release are year-on-year rates of change.

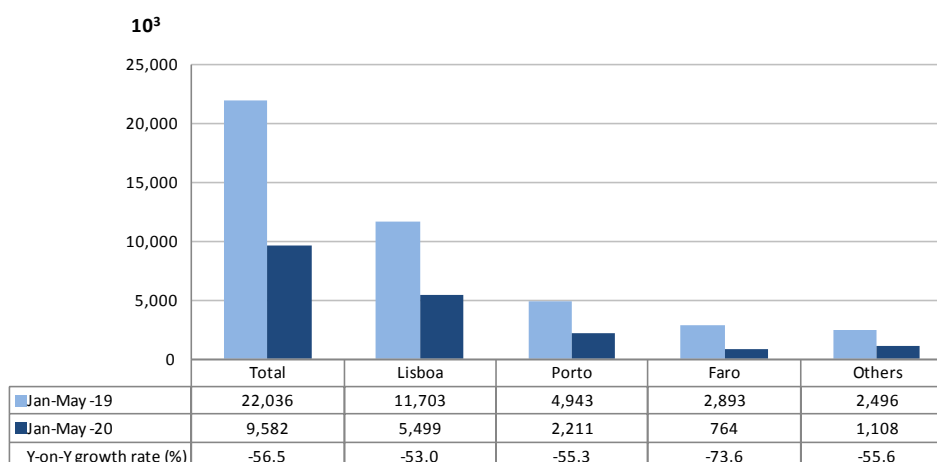
Considering the number of aircrafts landed and the number of passengers daily disembarked between January and May 2020, and comparing with the same period of the previous year, is visible the impact of the COVID-19 pandemic and the measures adopted at the airspace level from the beginning of the second fortnight of March, registering, even during May, reductions equal to or higher than 90% in the number of aircraft landed and greater than 95% in the number of passengers disembarked.

Figure 2 – Aircrafts landed and disembarked passengers in national airports – daily



Between January and May 2020, 43.1 thousand commercial aircraft landed at national airports (-50.6% compared to the same period in the previous year) and 9.6 million passengers were handled (-56.5%). The movement of passengers in Lisboa airport corresponded to 57.4% of total handled passengers (5.5 million) and recorded a decrease of 53.0%. Considering the three airports with the highest passenger traffic, Faro airport showed the greatest decrease in the movement of passengers in this period (-73.6%).

Figure 3 – Movement of passengers at national airports



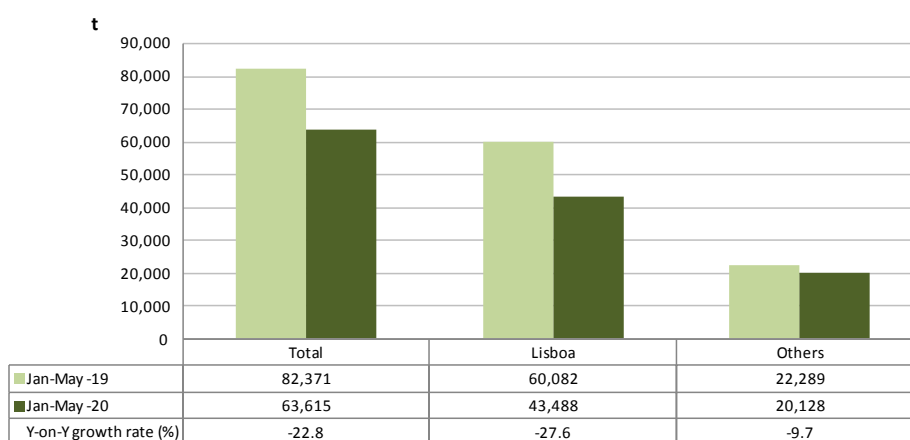
Between January and May 2020, and considering the volume of passengers disembarked and embarked on international flights, France was the main country of origin and destination of passengers at national airports. The United Kingdom was the second main country of origin and destination and showed the major reduction in the number of passengers disembarked and embarked (-64.9% and -61.1%, respectively).

Figure 4 – Main country of origin and destination of passengers at national airports

Ranking	Country of origin	Jan to May 20		Ranking	Country of destination	Jan to May 20	
		Passengers disembarked (10 ³)	Y-on-Y growth rate (%)			Passengers embarked (10 ³)	Y-on-Y growth rate (%)
1.º	France	640.7	-58.1	1.º	France	661.3	-56.3
2.º	United Kingdom	555.6	-64.9	2.º	United Kingdom	601.7	-61.1
3.º	Spain	504.6	-50.7	3.º	Spain	516.8	-49.8
4.º	Germany	371.2	-62.7	4.º	Germany	415.2	-58.4
5.º	Brazil	250.9	-43.3	5.º	Brazil	247.0	-35.9

Between January and May 2020, there was a decrease of 22.8% in freight and mail movement at national airports, reaching 63.6 thousand tonnes. The movement of freight and mail at Lisboa airport represented 68.4% of the total, corresponding to 43.5 thousand tonnes (-27.6% compared to the same period in the previous year).

Figure 5 – Freight and mail movement at national airports



EXPLANATORY NOTES

In this "Press Release" the following statistical data are used:

January to May 2019: Definitive results;
January to May 2020: Preliminary results.

SOURCES: Autoridade Nacional de Aviação Civil e ANA – Aeroportos de Portugal, S.A.

MAIN CONCEPTS:

Commercial aviation - Air transport flight performed for the public transport of passengers, freight or mail, for remuneration and for hire.

Commercial air traffic – Movement of aircrafts, passengers, freight and mail in commercial aviation.

Next Press Release "Air Transport Flash Statistics": August 17, 2020

Next Press Release "Transport activities" (2Q 2020): September 9, 2020