

Transport Activities

June 2020 – Air Transport Flash Statistics

Negligible movement of passengers at national airports in June

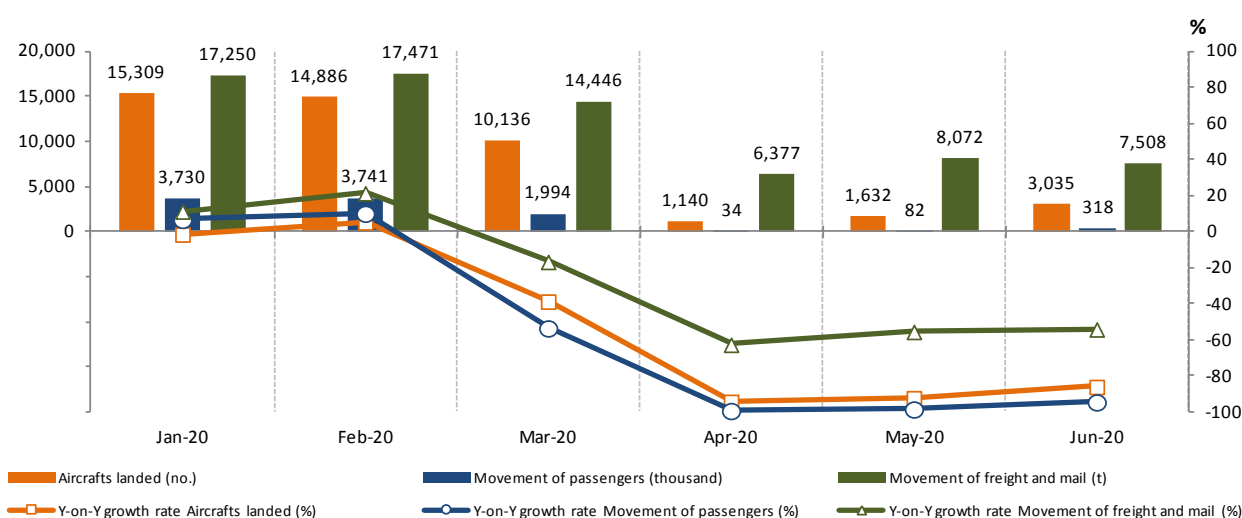
In June 2020 there was a movement of 318.2 thousand passengers at national airports, representing a decrease of 94.6% ¹ (-98.5% in May). The movement of freight and mail totalled 7.5 thousand tonnes, corresponding to a decrease of 54.1% (-55.5% in May).

In the **2nd Q 2020**, the number of passengers handled at national airports decreased by 97.4% (-15.4% in the 1st Q 2020).

In the **1st semester 2020**, France was the main country of origin and destination of passengers at national airports, followed by the United Kingdom which showed the major reduction in the number of passengers (-72.2% disembarked and -69.8% embarked). Faro airport recorded the greatest decrease, in relative terms, in the movement of passengers (-79.9%).

In June 2020, 3.0 thousand commercial aircrafts landed at national airports, representing a year-on-year growth rate of -86.0% (-92.3% in May and -94.3% in April). There was a movement of 318.2 thousand passengers (embarked, disembarked and direct transits), representing a year-on-year growth rate of -94.6% (-98.5% in May and -99.4% in April). The movement of freight and mail at national airports totalled 7.5 thousand tonnes, corresponding to a decrease of 54.1% (-55.5% in May and -62.6% in April).

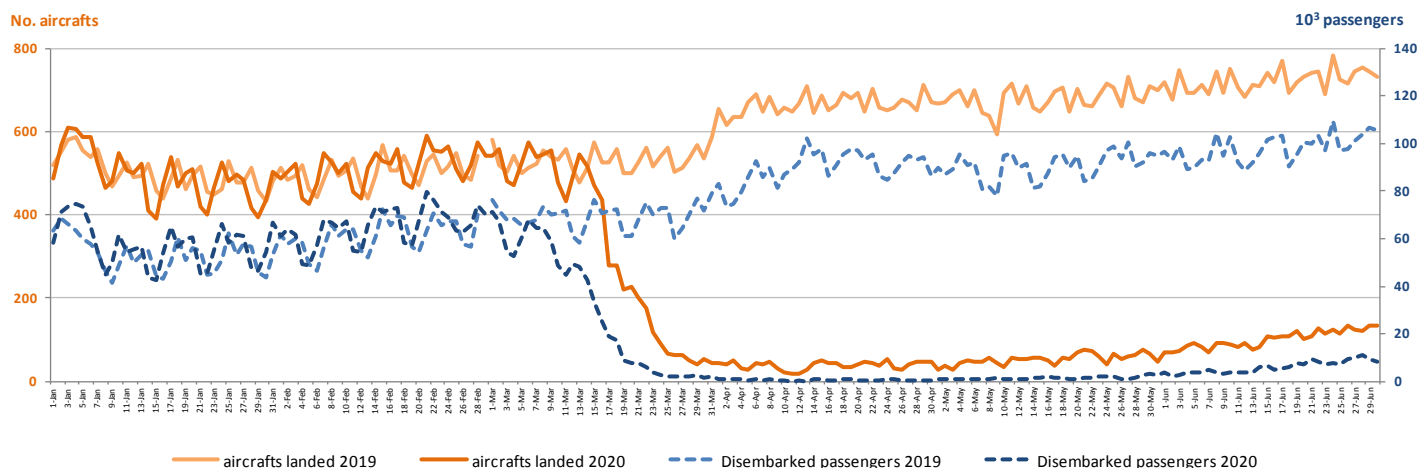
Figure 1 – Aircrafts landed, passengers and freight/mail movement at national airports



¹ Unless stated otherwise, the rates of change presented in this press release are year-on-year rates of change.

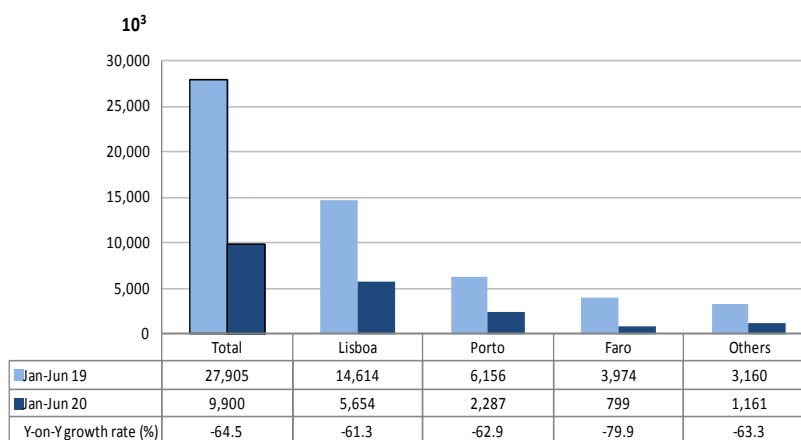
Considering the number of aircrafts landed and the number of passengers daily disembarked between January and June 2020, and comparing with the same period of the previous year, is visible the impact of the COVID-19 pandemic and the measures adopted at the airspace level from the beginning of the second fortnight of March, and the slow recovery, registering, during June, reductions greater than 80% in the number of aircraft landed and equal to or higher than 90% in the number of passengers disembarked.

Figure 2 – Aircrafts landed and disembarked passengers in national airports – daily



In the first half of 2020, 46.1 thousand commercial aircraft landed at national airports (-57.7% compared to the same period in the previous year) and 9.9 million passengers were handled (-64.5%). The movement of passengers in Lisboa airport corresponded to 57.1% of total handled passengers (5.7 million) and recorded a decrease of 61.3%. Considering the three airports with the highest passenger traffic, Faro airport recorded the greatest decrease in the movement of passengers in this period (-79.9%).

Figure 3 – Movement of passengers at national airports



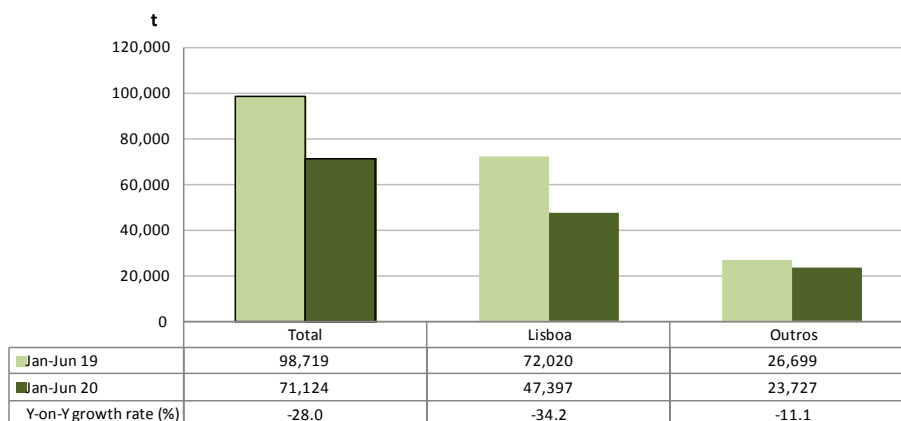
In the first half of 2020, and considering the volume of passengers disembarked and embarked on international flights, France was the main country of origin and destination. The United Kingdom was the second main country of origin and destination and showed the major reduction in the number of passengers disembarked and embarked (-72.2% and -69.8%, respectively).

Figure 4 – Main country of origin and destination of passengers at national airports

Ranking	Country of origin (of the flight)	Jan to Jun 20		Ranking	Country of destination (of the flight)	Jan to Jun 20	
		Passengers disembarked (10 ³)	Y-on-Y growth rate (%)			Passengers embarked (10 ³)	Y-on-Y growth rate (%)
1.º	France	664.3	-65.0	1.º	France	680.4	-63.8
2.º	United Kingdom	573.8	-72.2	2.º	United Kingdom	612.9	-69.8
3.º	Spain	504.6	-60.9	3.º	Spain	516.8	-59.9
4.º	Germany	398.2	-67.9	4.º	Germany	435.9	-65.0
5.º	Brazil	256.2	-53.3	5.º	Brazil	252.0	-48.3

In the first semester of 2020, there was a decrease of 28.0% in freight and mail movement at national airports, reaching 71.1 thousand tonnes. The movement of freight and mail at Lisboa airport represented 66.6% of the total, corresponding to 47.4 thousand tonnes (-34.2% compared to the same period in the previous year).

Figure 5 – Freight and mail movement at national airports



EXPLANATORY NOTES

In this "Press Release" the following statistical data are used:

January to June 2019: Definitive results;
January to June 2020: Preliminary results.

SOURCES: Autoridade Nacional de Aviação Civil e ANA – Aeroportos de Portugal, S.A.

MAIN CONCEPTS:

Commercial aviation - Air transport flight performed for the public transport of passengers, freight or mail, for remuneration and for hire.

Commercial air traffic – Movement of aircrafts, passengers, freight and mail in commercial aviation.

Next Press Release "Air Transport Flash Statistics": September 17, 2020

Next Press Release "Transport activities" (2ndQ 2020): September 9, 2020