

18 January 2021

Transport Activities

November 2020 – Air Transport Flash Statistics

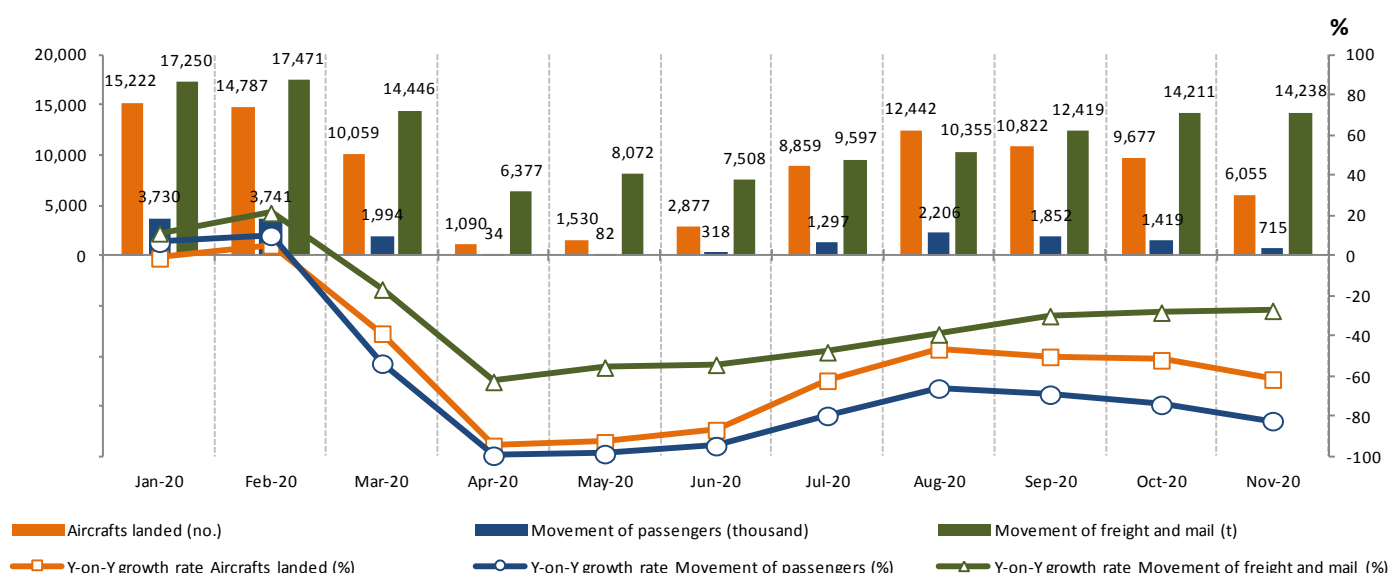
82.1% reduction in passenger movement at national airports

In November 2020 there was a movement of 715 thousand passengers at national airports, representing a decrease of 82.1%¹ (-74.1% in October). The movement of freight and mail totalled 14.2 thousand tonnes, corresponding to a decrease of 27.2% (-28.1% in October).

Despite the circumstances determined by the COVID-19 pandemic, Statistics Portugal calls for the best collaboration by companies, families and public entities in responding to Statistics Portugal’s data requests. The quality of official statistics, particularly its ability to identify the impacts of the COVID-19 pandemic, crucially depends on this collaboration, which Statistics Portugal thanks in advance.

In November 2020, 6.1 thousand commercial aircrafts landed at national airports, representing a year-on-year growth rate of -61.4% (-51.9% in October and -50.2% in September). There was a movement of 715 thousand passengers (embarked, disembarked and direct transits), representing a year-on-year growth rate of -82.1% (-74.1% in October and -69.0% in September). The movement of freight and mail at national airports totalled 14.2 thousand tonnes, corresponding to a decrease of 27.2% (-28.1% in October and -29.8% in September).

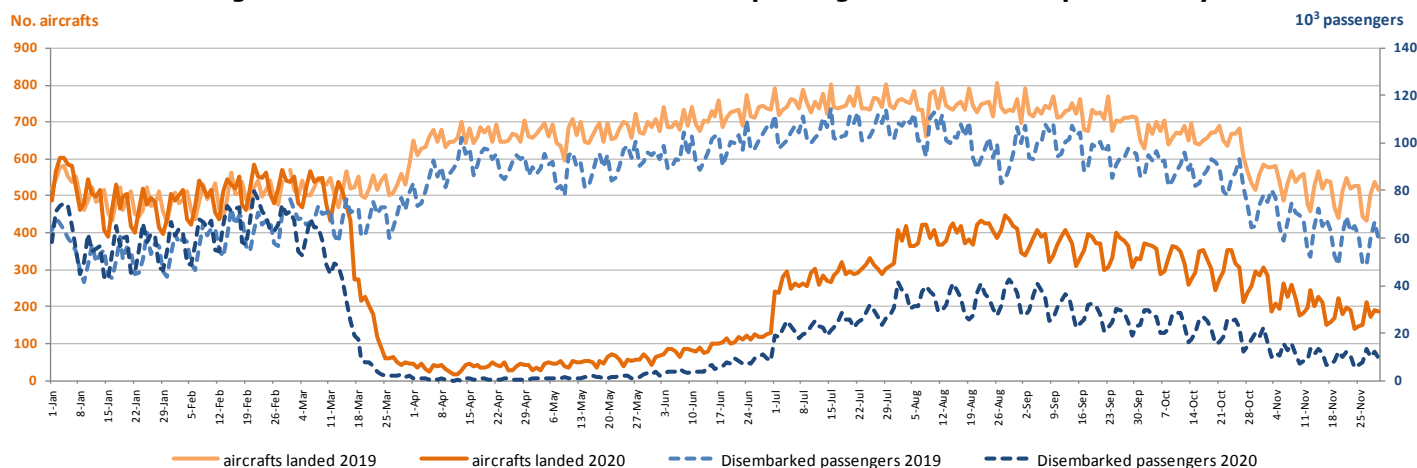
Figure 1 – Aircrafts landed, passengers and freight/mail movement at national airports



¹ Unless stated otherwise, the rates of change presented in this press release are year-on-year rates of change.

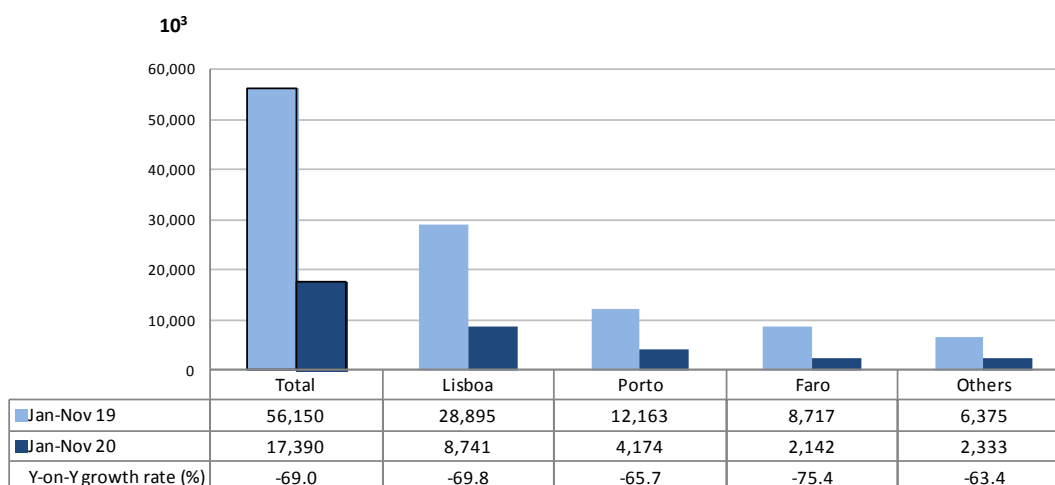
Considering the number of aircrafts landed and the number of passengers daily disembarked between January and November 2020, and comparing with the same period of the previous year, is visible the impact of the COVID-19 pandemic and the measures adopted at the airspace level from the beginning of the second fortnight of March. Despite the recovery verified in July and August, since September there was a reversal of the trend and in November there was a further deterioration in the number of passengers disembarked, with daily reductions over 70%.

Figure 2 – Aircrafts landed and disembarked passengers in national airports – daily



Between January and November 2020, 93.4 thousand commercial aircraft landed at national airports (-55.9% compared to the same period in the previous year) and 17.4 million passengers were handled (-69.0%). The movement of passengers in Lisboa airport corresponded to 50.3% of total handled passengers (8.7 million) and recorded a decrease of 69.8%. Considering the three airports with the highest passenger traffic, Faro airport recorded the highest decrease in the movement of passengers in this period (-75.4%).

Figure 3 – Movement of passengers at national airports



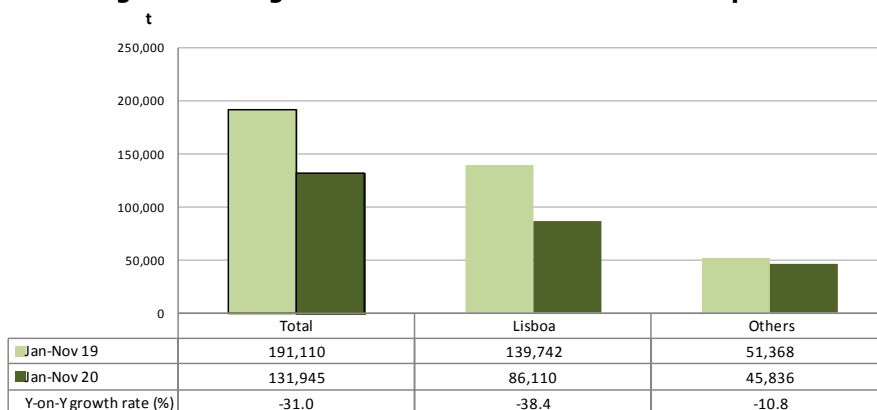
Between January and November 2020, and considering the volume of passengers disembarked and embarked on international flights, France was the main country of origin and destination of flights. The United Kingdom was the second main country of origin and destination and showed the major reduction in the number of passengers disembarked and embarked compared to the same period in the previous year (-75.7% and -74.9%, respectively). There were no changes in the ranking of the top 5 countries of origin or destination of flights, compared to the period from January to October.

Figure 4 – Main country of origin and destination of flights with passengers at national airports

Ranking	Country of origin (of the flight)	Jan to Nov 20		Ranking	Country of destination (of the flight)	Jan to Nov 20	
		Passengers disembarked (10 ³)	Y-on-Y growth rate (%)			Passengers embarked (10 ³)	Y-on-Y growth rate (%)
1.º	France	1,340.9	-62.9	1.º	France	1,360.3	-62.3
2.º	United Kingdom	1022.5	-75.7	2.º	United Kingdom	1,067.6	-74.9
3.º	Germany	812.5	-66.5	3.º	Germany	862.7	-65.1
4.º	Spain	686.6	-73.7	4.º	Spain	700.4	-73.0
5.º	Switzerland	427.6	-58.4	5.º	Switzerland	448.6	-56.9

In the period from January to November 2020, there was a decrease of 31.0% in freight and mail movement at national airports, reaching 131.9 thousand tonnes. The movement of freight and mail at Lisboa airport represented 65.3% of the total, corresponding to 86.1 thousand tonnes (-38.4% compared to the same period in the previous year).

Figure 5 – Freight and mail movement at national airports



EXPLANATORY NOTES

In this "Press Release" the following statistical data are used:

January to November 2019: Definitive results;
January to November 2020: Preliminary results.

SOURCES: Autoridade Nacional de Aviação Civil and ANA – Aeroportos de Portugal, S.A.

MAIN CONCEPTS:

Commercial aviation - Air transport flight performed for the public transport of passengers, freight or mail, for remuneration and for hire.

Commercial air traffic - Movement of aircrafts, passengers, freight and mail in commercial aviation.

Next Press Release "Air Transport Flash Statistics": February 17, 2021

Next Press Release "Transport activities" (4th Q 2020): March 9, 2021