



INSTITUTO NACIONAL DE ESTATÍSTICA  
STATISTICS PORTUGAL

press release

# INSTAQUE

1 February 2021  
TOURIST ACTIVITY  
December 2020 – Flash estimate

## TOURIST ACTIVITY WITH LIGHT RECOVERY IN DECEMBER PRELIMINARY RESULTS FOR 2020: GUESTS AND OVERNIGHT STAYS WITH OVER 60% LOSSES

According to the flash estimate, in **December 2020**, the tourist accommodation sector<sup>1</sup> should have registered 462.5 thousand guests and 972.7 thousand overnight stays, corresponding to year-on-year rates of change<sup>2</sup> of -70.7% and -72.3%, respectively (-76.8% and -76.9% in November, in the same order). Overnight stays of residents will have decreased by 53.9% (-58.8% in November) and those of non-residents will have fallen by 82.9% (-85.5% in the previous month).

In December, 50.0% of tourist accommodation establishments would have been closed or did not received guests (46.9% in November).

When **considering the whole year 2020**, the tourism accommodation establishments should have registered 10.5 million guests and 26.0 million overnight stays, corresponding to year-on-year rates of change of -61.2% and -63.0% respectively (+7.9% and +4.6% in 2019). The internal market contributed with 13.6 million overnight stays (-35.3%; +6.5% in 2019) and the external markets were responsible for 12.3 million overnight stays (-74.9%; +3.8% in 2019). It would have to go back to 1993, the year in which 23.6 million overnight stays were registered, to find a smaller number of overnight stays.

---

Despite the circumstances determined by the COVID-19 pandemic, Statistics Portugal calls for the best collaboration by companies, families and public entities in responding to Statistics Portugal's data requests. The quality of official statistics, particularly its ability to identify the impacts of the COVID-19 pandemic, crucially depends on this collaboration, which Statistics Portugal thanks in advance.

---

In **December 2020**, **tourist accommodation sector** should have recorded 462.5 thousand guests and 972.7 thousand overnight stays, corresponding to year-on-year rates of change of -70.7% and -72.3%, respectively (-76.8% and -76.9% in November, in the same order).

---

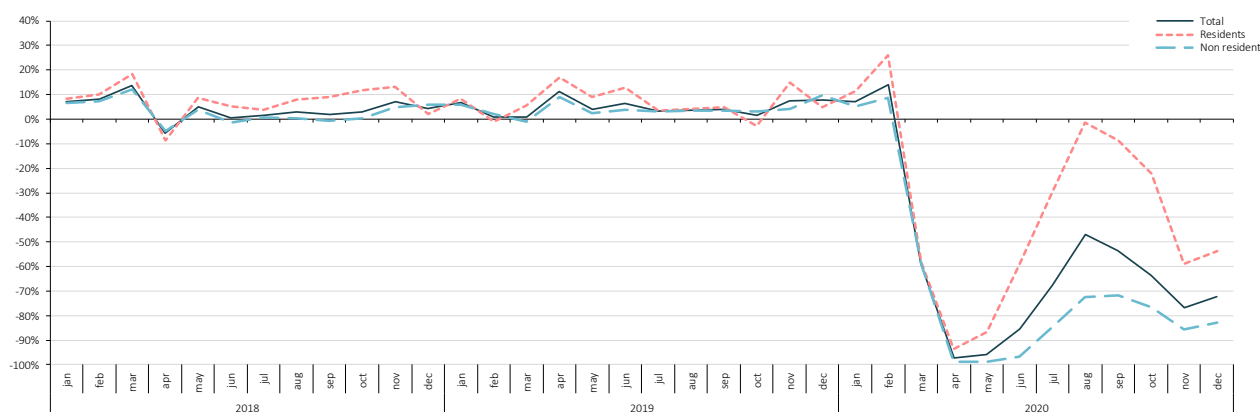
<sup>1</sup> Monthly series which includes three types of accommodation facilities: hotel establishments (hotels, apartment hotels, tourist apartments, tourist villages, pousadas and quintas da Madeira), local accommodation with 10 or more beds (according to the statistical threshold defined by EU Regulation 692/2011) and rural/lodging tourism.

<sup>2</sup> Unless stated otherwise, the rates of change presented in this press release correspond to year-on-year rates of change.



Overnight stays from residents will have decreased by 53.9% (-58.8% in November) reaching 589.0 thousand, corresponding to 60.6% of the total, while those from non-residents will have fallen by 82.9% (-85.5% in the previous month), standing at 383.7 thousand. Resident guests would have been 343.8 thousand, corresponding to a decrease of 55.7% (-62.7% in November) and non-resident guests would have reached a total of 118.6 thousand, decreasing by 85.2% (-88.0% in the previous month).

Figure 1. Overnight stays in tourist accommodation establishments  
Year-on-year rates of change



Alentejo region will have continued to present the smallest decrease in the number of overnight stays, compared to the same month last year, decreasing by 45.1% (-37.7% in the residents and -64.5% in the non-residents). The remaining regions recorded decreases of over 60% in December

When **considering the whole year 2020**, the tourism accommodation establishments should have registered 10.5 million guests and 26.0 million overnight stays, corresponding to year-on-year rates of change of -61.2% and -63.0% respectively (+7.9% and +4.6% in 2019). The internal market contributed with 13.6 million overnight stays (-35.3%; +6.5% in 2019) and the external markets were responsible for 12.3 million overnight stays (-74.9%; +3.8% in 2019).

Since 1993, the year in which 23.6 million overnight stays were registered, that the total number of overnight stays was not as low as that seen in 2020.

Alentejo was the region that registered the lowest decrease in the number of overnight stays in the total year compared to 2019, decreasing by 37.3%, while the largest decreases were recorded in AM Lisboa (-71.5%) and RA Açores (-71.1%).



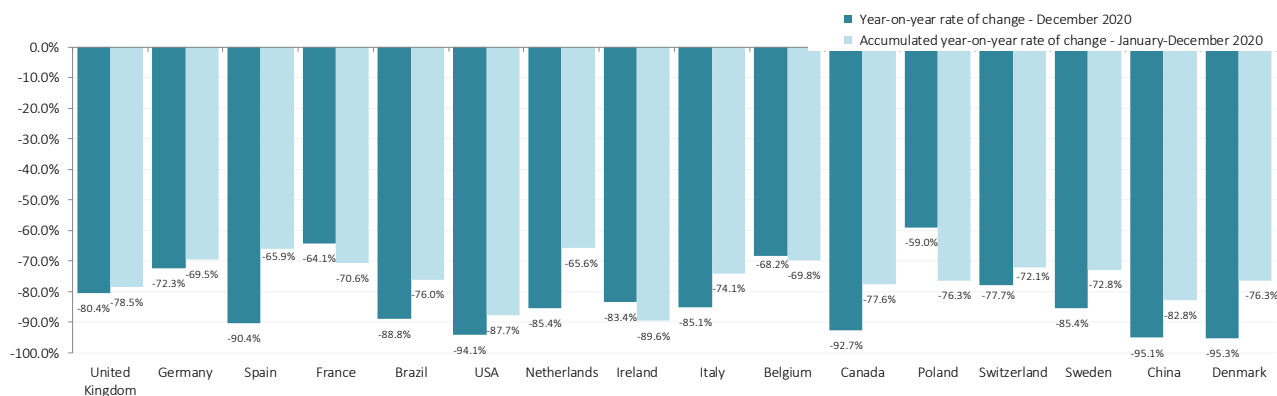
Figure 2. Year-on-year rates of change of overnight stays  
in tourist accommodation establishments, by region

NUTS II	Total of overnight stays				Overnight stays from residents				Overnight stays from non residents			
	Dec 20		Jan - Dec 20		Dec 20		Jan - Dec 20		Dec 20		Jan - Dec 20	
	Value	Y-o-y change rate (%)	Value	Y-o-y change rate (%)	Value	Y-o-y change rate (%)	Value	Y-o-y change rate (%)	Value	Y-o-y change rate (%)	Value	Y-o-y change rate (%)
<b>Portugal</b>	<b>972.7</b>	<b>-72.3</b>	<b>25 983.9</b>	<b>-63.0</b>	<b>589.0</b>	<b>-53.9</b>	<b>13 648.4</b>	<b>-35.3</b>	<b>383.7</b>	<b>-82.9</b>	<b>12 335.6</b>	<b>-74.9</b>
Norte	180.6	-72.7	4 419.0	-59.1	139.0	-56.4	2 747.3	-36.3	41.7	-87.8	1 671.7	-74.3
Centro	151.9	-63.1	3 382.9	-52.6	128.0	-56.3	2 615.1	-34.9	23.9	-79.9	767.9	-75.4
AM Lisboa	242.5	-79.2	5 313.1	-71.5	137.5	-55.6	1 965.6	-49.8	105.0	-87.8	3 347.5	-77.3
Alentejo	76.1	-45.1	1 842.0	-37.3	62.5	-37.7	1 487.8	-23.2	13.6	-64.5	354.2	-64.6
Algarve	153.7	-74.5	7 924.1	-62.1	68.0	-54.4	3 830.4	-23.2	85.7	-81.1	4 093.7	-74.3
RA Açores	28.4	-67.8	659.1	-71.1	24.0	-54.5	459.8	-53.9	4.4	-87.5	199.3	-84.4
RA Madeira	139.4	-68.7	2 443.8	-67.2	30.1	-44.1	542.5	-42.3	109.3	-72.1	1 901.3	-70.8

All of the main inbound markets maintained significant decreases<sup>3</sup> in **December**, although, in most cases, lower than in the previous month.

In the year 2020 as a whole, all major markets recorded significant declines, above 65%. The largest reductions were registered in the Irish (-89.6%), USA (-87.7%) and Chinese (-82.8%) markets.

Figure 3. Overnight stays in tourist accommodation establishments by main (16) inbound markets:  
year-on-year and accumulated rates of change



In December, 50.0% of tourist accommodation establishments would have been closed or did not received guests (46.9% in November).

<sup>3</sup> Based in the overnight stays results of 2019.



INSTITUTO NACIONAL DE ESTATÍSTICA  
STATISTICS PORTUGAL

press release

# DIÁSTASQUE

---

## EXPLANATORY NOTES

The sources used in this press release are: Survey on guest stays in hotel establishments and other accommodations.

The results presented may be revised, since the primary information has not yet been fully collected. The revisions that occurred with the publication of subsequent results have not been significant. The results involving greater detail will be published on February 15.

**Guest** – Individual that spends at least one overnight stay in a tourist accommodation establishment.

**Overnight stay** – Time spent by an individual between midday and midday of the following day.

**Year-on-year rates of change** – comparison between the variable level in the reference period and the same period of the year before. The calculation of year-on-year rates of change for the main indicators is based on values in units, although in this press release they are visible only in thousands.

In order to simplify the language, the term “foreigner” might be used instead of “non-resident”.

---

**Date of next press release** - 15 February 2021

---