



July 16th 2021

VITAL STATISTICS – Monthly data

June 2021

MORTALITY, LIVE BIRTHS AND MARRIAGES

MARRIAGES CELEBRATED IN MAY INCREASED 88.4% COMPARED TO APRIL

In June 2021, the number of deaths was 8,116, lower than the figure registered in May (-493), maintaining the downward trend in the number of deaths when compared with in the same period of 2020, minus 5.2% (-448). The number of deaths due to COVID-19 was 76, accounting for 0.9% of the total deaths.

In April and May 2021, 6,212 and 6,629 children, respectively, were born alive, corresponding to reductions of 10.7% (-742) and 8.4% (-611), when compared to the same months of 2020, thus maintaining the downward trend registered in births since July 2020.

In April and May 2021, the natural balance was, respectively, -2,217 and -1,972, which compares with the natural balances of -3,487 and -2,361, registered in the same months of 2020.

In May 2021, 2,602 marriages were celebrated, representing an increase of 88.4% when compared to April (1,381).

In this press release, Statistics Portugal provides **preliminary data** regarding the number of deaths, per month until June 2021 and per week until the 26th week (June 28th to July 4th), and per month until May 2021 for live births and marriages, that occurred in the national territory, making a comparison with the homologous period.

The information is obtained through the Civil Register collected under the Integrated Civil Registration and Identification System (SIRIC) until July 13th, 2021. The information is preliminary and will be subject to updates.

Mortality maintains reduction

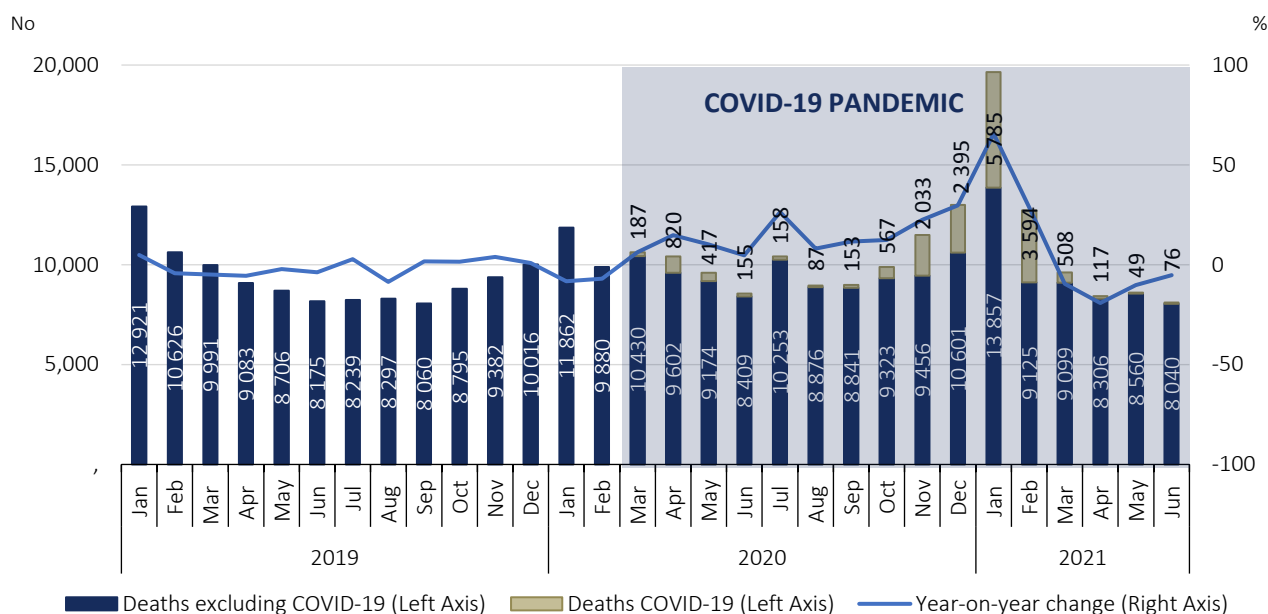
January 2021 recorded the highest number of monthly deaths observed since the beginning of the pandemic (19,642), corresponding to an increase in mortality of 65.6% (+7,780 deaths) compared to the same month of 2020. Of the total deaths, 5,785 were by COVID-19, representing 29.5% of mortality in January and the maximum of monthly deaths by COVID-19. Mortality decreased in February to 12,719 deaths, however, continuing to register an increase in relation to the same month of 2020, plus 28.7% (+2,839 deaths). In this month of February 2021, the number of deaths by COVID-19 was 3,594, the second highest after January, corresponding to 28.3% of the total. Excluding the deaths by COVID-19 recorded in February, mortality in this

month would be, for the first time after the start of the pandemic, below the homologous value of 2020 (-755 deaths).

In March, April and May 2021, the number of deaths continued to decrease, reaching numbers below those recorded in the same months of 2020. In those months there were 9,607, 8,423 and 8,609 deaths in Portugal, respectively, 9.5% (-1,010 deaths), 19.2% (-1,999 deaths) and 10.2% (-982 deaths) less than in the same months of 2020. The number of deaths by COVID-19 in those months was 508, 117 and 49, representing, respectively, 5.3%, 1.4% and 0.6% of the total deaths.

In June 2021, the number of deaths was 8,116, lower than the figure registered in May (-493 deaths), thus maintaining the downward trend in the number of deaths when compared with in the same period of 2020, minus 5.2% (-448 deaths). The number of deaths due to COVID-19 was 76, accounting for 0.9% of the total deaths.

Figure 1: Deaths and year-on-year change, January 2019 to June 2021

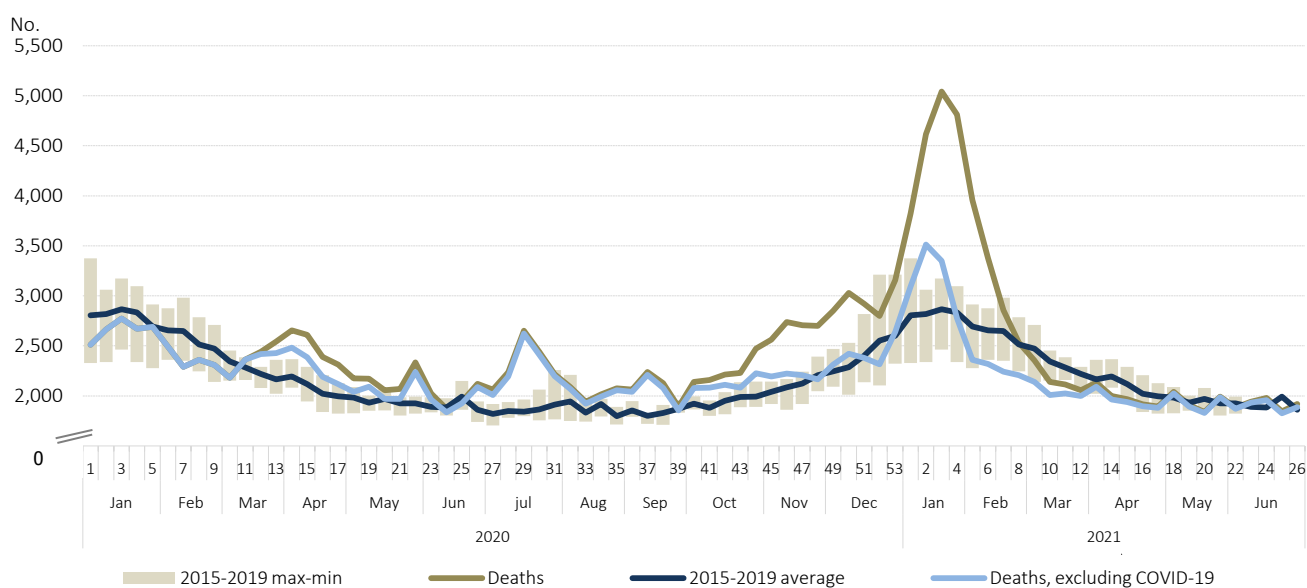


Source: Statistics Portugal, Deaths. Directorate-General of Health, Daily COVID-19 Status Report.

Analyzing weekly mortality from the last week of 2020 (December 28th to January 3rd, 2021), the number of deaths strongly increased up to the 3rd week of 2021 (January 18th to 24th), thus reaching the highest number of deaths observed since the beginning of the pandemic (5,041). However, it was in the 4th week (January 25th to 31st) that the highest number of deaths by COVID-19 (2,036) was reached, starting from this week onwards a decreasing trend.

Between May 7th and July 4th (weeks 23 to 26), the number of deaths remained relatively stable around the 2015-2019 average, that is, close to pre-pandemic values. In the 26th week, 1,919 deaths were registered. The number of deaths due to COVID-19 was 31, accounting for 1.6% of the total deaths.

Figure 2: Deaths 2020, 2021 and average 2015-2019, by week, weeks 1 of 2020 to 26 of 2021



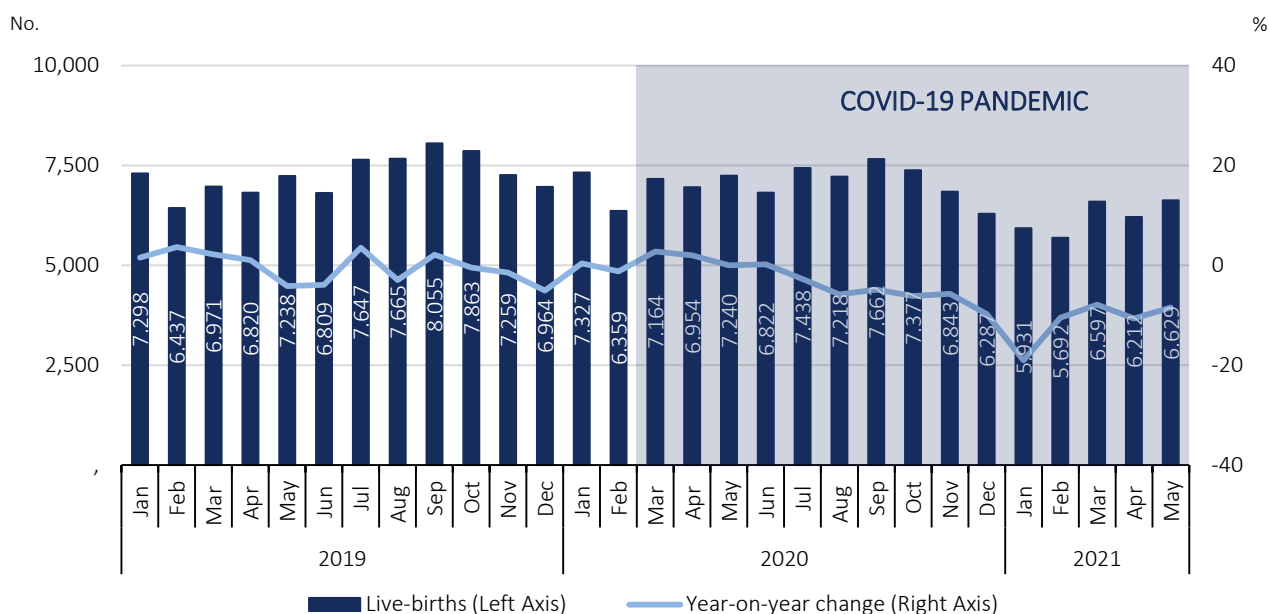
Source: Statistics Portugal, Deaths. Directorate-General of Health, Daily COVID-19 Status Report.

Number of Live births below the values registered in 2020

In April and May 2021, 6,212 and 6,629 children, respectively, were born alive, corresponding to reductions of 10.7% (-742) and 8.4% (-611), when compared to the same months of 2020, thus maintaining the downward trend registered in births since July 2020.

Despite some recovery in births from February 2021, the number of live births was always lower than between the months of January to May 2020, representing a total of 3,983 less live births.

Figure 3: Live births and year-on-year change, January 2019 to May 2021



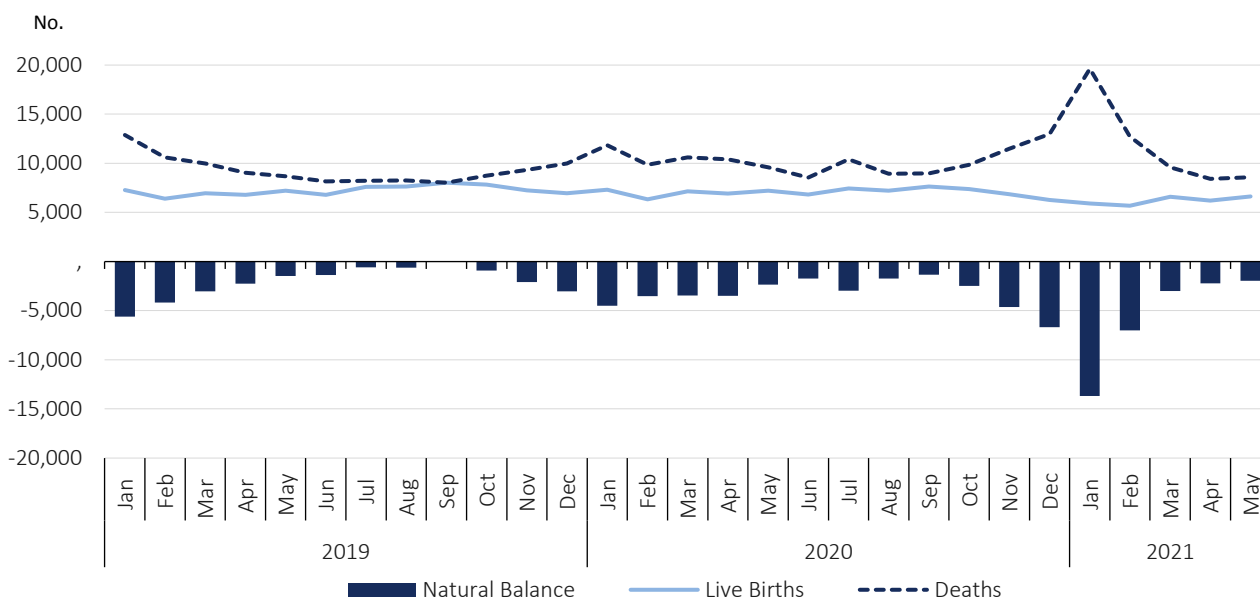
Source: Statistics Portugal, Live births.

Natural balance less negative

The increase in the number of deaths, to which mortality due to COVID-19 contributed, as well as the decrease in the number of live births, resulted in a strong reduction of the natural balance in 2020 and in the first two months of 2021. January and February 2021 were the months with the lowest natural balance registered, respectively, -13,702 and -7,026. As of March 2021, the natural balance became less negative, reaching -3,010 that month.

In April and May 2021, the natural balance registered, respectively, values of -2,217 and -1,972, which compares with the natural balances of -3,487 and -2,361, registered in the same months of 2020.

Figure 4: Live births, deaths and natural balance¹, January 2019 to May 2021



Source: Statistics Portugal, Live births, Deaths and Demographic indicators.

Marriage’s celebrations maintain growth trend

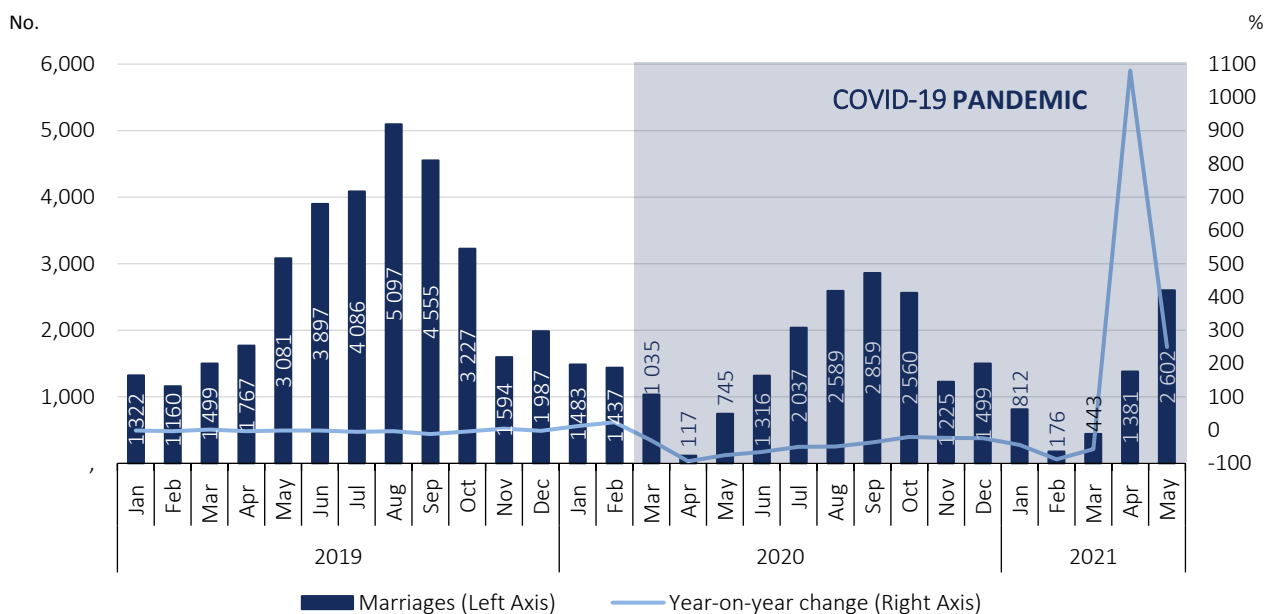
The measures resulting from the containment of the pandemic had an impact on the lives of citizens, including mobility and social contact. As such the statistical on marriages celebrated from March 2020 onwards should be read in this context.

In the first three months of 2021, 1,431 marriages were celebrated in Portugal (-2,524 when compared to the same period in 2020). However, from April 2021, with the deconfinement measures in place, the number of marriages celebrated in the country increased.

In May 2021, 2,602 marriages were celebrated, representing an increase of 88.4% when compared to April (1,381).

¹ The natural balance is calculated based on the number of live births of mothers residing in Portugal and the number of deaths of residents in Portugal.

Figure 5: Marriages and year-on-year change, January 2019 to May 2021



Source: Statistics Portugal, Marriages.



TECHNICAL NOTE

Statistics Portugal releases the preliminary weekly deaths, based on the information registered in the Civil Register Offices until July 13th 2021. On the Statistics Portugal Website the monthly preliminary values of live births and marriages, from January to April 2021, with geographical breakdowns up to NUTS 3 are also made available. In this Press Release the total preliminary figures of live births and marriages are disclosed for the month of May 2021.

Data are obtained from statistical operations of direct and exhaustive collection on live births, deaths and marriages in Portuguese territory using facts that are subject to compulsory civil registration (birth and death) in the Sistema Integrado do Registo e Identificação Civil (SIRIC).

In addition to administrative information obtained from Civil Register Offices, Statistics Portugal collects an additional set of variables identified as statistically pertinent to the National Statistic System (NSS) and the European Statistical System (EES). Data is recorded and sent electronically, in compliance with the requirements set out by Statistics Portugal and laid down in liaison with the Instituto de Registos e Notariado (IRN) and the Instituto de Gestão Financeira e Equipamentos da Justiça (IGFEJ).

Data on the number of deaths by COVID-19 are also used, whose source is the daily situation report COVID-19 of the Directorate-General for Health that provides only a partial measure of the pandemic on mortality.

The “excess mortality” indicator calculated by Eurostat, which compares the number of deaths registered each month, in the EU and EFTA countries, with the average monthly number of deaths in the period 2016-2019, is not provided this month, because the information was not yet available at the time this Press Release was written.

DEFINITIONS

Marriage: Contract signed by two persons that intend to start a family in full partnership and cohabitation according to legislation. Note: marriage can be held between persons from different or same sex.

Live birth: This is the complete expulsion or extraction from the mother's body, irrespective of the duration of the pregnancy, of a product of fertilization that, after separation, breathes or shows any other signs of life, such as a beating of the heart or umbilical cord or actual contraction of any muscle subject to voluntary movement, whether the umbilical cord has been severed and whether the placenta is retained.

Death: The permanent disappearance of vital functions.

Natural balance: The difference between the number of live births and the number of deaths during a given period, usually a calendar year.

Year-on-year change: The year-on-year change compares the level of a variable between the reference month and the same month of the previous year.

Detailed methodological information available at: www.ine.pt, option Products, Metadata system.

Detailed statistical information available at: www.ine.pt, option Products, Statistical data, database, theme Population, subtheme Births and natality rates and subtheme Mortality and life expectancy.