



13 September 2021

INDICES OF PRODUCTION, EMPLOYMENT AND WAGES IN CONSTRUCTION

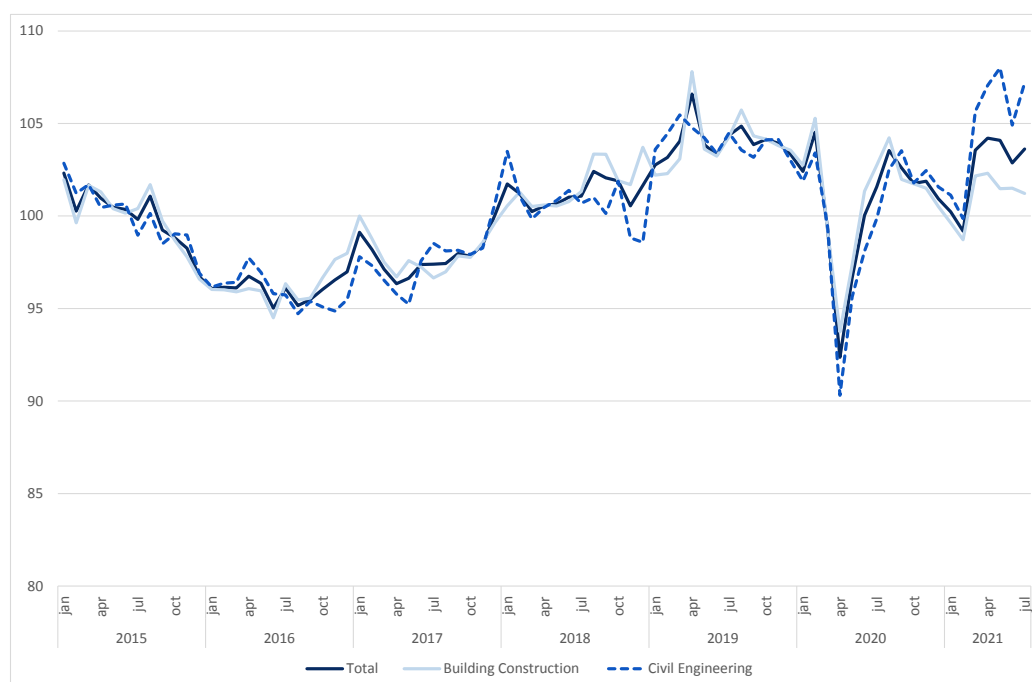
July 2021

CONSTRUCTION PRODUCTION INDEX INCREASED 4.1%

The index of production in construction increased 4.1% in year-on-year terms (3 months moving average, working days and seasonally adjusted), slowing down by 3.6 percentage points from June.

Employment and wages and salaries change rates stood at 2.1% and 5.6% (2.5% and 9.0% in the previous month), respectively.

Figure 1. Indices of Production in Construction (2015=100)



Next press release – 08 October 2021