

29 September 2021

Monthly Employment and Unemployment Estimates

August 2021

In August, the unemployment rate stood at 6.4% and the labour underutilisation rate at 12.6%

July 2021:

- The employed population has increased by 0.5% from the previous month, by 2.4% from three months before and by 4.8% from the same month of 2020.
- The unemployed population has decreased from by 3.6% from June 2021, by 4.0% from April of the same year and by 16.0% from July 2020.
- The unemployment rate stood at 6.6%, down 0.2 percentage points (pp) from the previous month, down 0.4 pp from three months before and down 1.5 pp from a year earlier.
- The labour underutilisation rate was estimated at 12.6%, having decreased by 0.2 pp the previous month, by 0.3 pp from three months before and by 3.1 pp from June 2020.

August 2021:

- The employed population decrease of 0.6% from the previous month and increased by 0.5% from three months before and by 3.8% from the same month of 2020.
- The unemployed population has decreased from the three comparison periods: by 4.1%, 9.9% and 20.9%, respectively.
- The unemployment rate stood at 6.4%, down 0.2 pp from the previous month, down 0.6 pp from three months before and down 1.8 pp from a year earlier.
- The labour underutilisation rate was estimated at 12.6%, the same value as in July 2021 but down 0.2 pp from April of that year and down 2.9 pp from August 2020.

Monthly Employment and Unemployment Estimates (16 to 74)								
Main indicators								
	Unit	Seasonally adjusted data						
		Jul 2020	Aug 2020	Apr 2021	May 2021	Jun 2021	Jul 2021	Aug 2021 (p)
Active population	Thousands	5,009.2	5,034.4	5,069.6	5,138.6	5,155.8	5,166.6	5,124.8
Employed population		4,604.5	4,622.2	4,715.6	4,777.0	4,803.2	4,826.7	4,798.9
Unemployed population		404.7	412.2	354.0	361.6	352.6	339.8	325.9
Inactive population		2,654.0	2,627.3	2,606.8	2,539.1	2,522.0	2,512.8	2,553.8
Labour underutilisation		829.3	814.0	680.6	678.6	684.3	675.0	667.8
Activity rate	%	65.4	65.7	66.0	66.9	67.2	67.3	66.7
Employment rate		60.1	60.3	61.4	62.2	62.6	62.9	62.5
Unemployment rate		8.1	8.2	7.0	7.0	6.8	6.6	6.4
Inactivity rate		34.6	34.3	34.0	33.1	32.8	32.7	33.3
Labour underutilisation rate		15.7	15.5	12.9	12.8	12.8	12.6	12.6

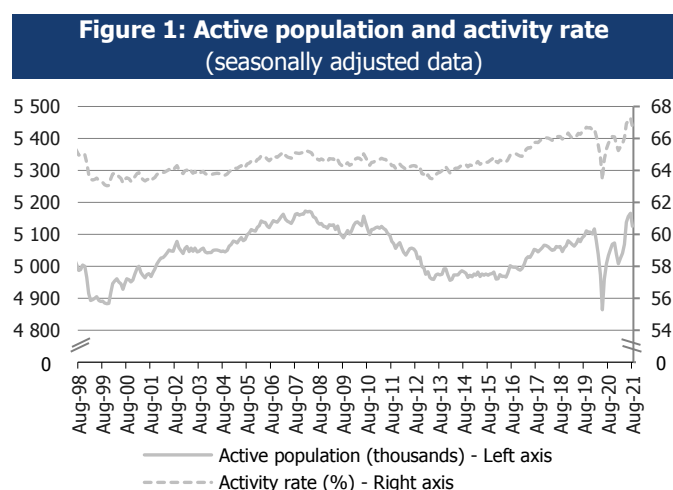
Source: Statistics Portugal, Labour Force Survey.

Note: (p) - Provisional estimates.

A. Active population and activity rate

The active population estimate, in July 2021, stood at 5,166.6 thousand people, having increased by 0.2% (10.8 thousand) from the previous month (June 2021), by 1.9% (97.0 thousand) from three months before (April 2021) and by 3.1% (157.4 thousand) from a year earlier (July 2020).

Similar behaviour has had the activity rate, estimated at 67.3%, which has increased from the three comparison periods: by 0.1 percentage points (pp), by 1.3 pp and by 1.9 pp, respectively.



Note: The August 2021 estimates are provisional.

In August 2021², the active population was estimated at 5,124.8 thousand people, having decreased by 0.8% (41.8 thousand) from the month before and by 0.3% (13.8 thousand) from three months before and increased by 1.8% (90.4 thousand) from the year before.

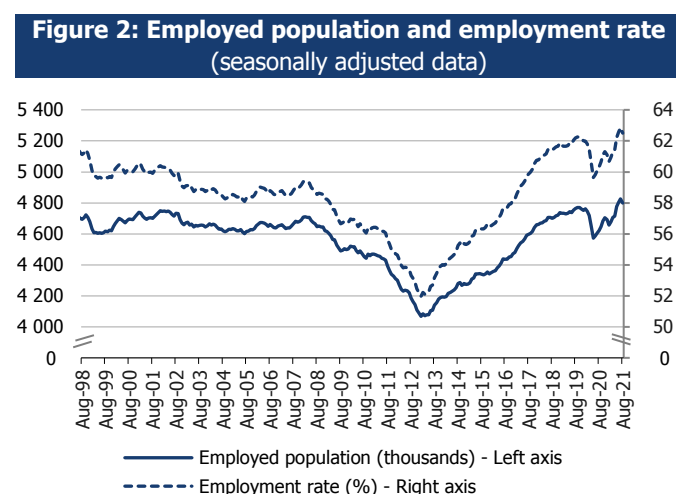
Similar pattern was also observed in the activity rate (66.7%): it has decreased by 0.6 pp from July 2021 and

by 0.2 pp from May 2021 and has increased by 1.0 pp from August 2020.

B. Employed population and employment rate

The employed population stood, in July 2021, at 4,826.7 thousand people, having increased by 0.5% (23.5 thousand) from the previous month, by 2.4% (111.1 thousand) from three months before and by 4.8% (222.2 thousand) from a year earlier.

The employment rate stood at 62.9%, up 0.3 pp from the previous month, up 1.5 pp from three months before and up 2.8 pp from the year before.



Note: The August 2021 estimates are provisional.

In August 2021, the employed population, which stood at 4,798.9 thousand people, has decreased by 0.6% (27.8 thousand) from the previous month and has increased by 0.5% (21.9 thousand) from three months before and by 3.8% (176.7 thousand) from one year before.

The employment rate was estimated at 62.5%, having decreased by 0.4 pp from July 2021 and increased by 0.3 pp from May 2021 and by 2.2 pp from August 2020.

² The estimates for the last reference month (in this case, the quarter centred in August 2021) were calculated with incomplete information for the last month of the quarter (September 2021). These estimates will be revised next month (as described in the technical note).

C. Unemployed population and unemployment rate

In July 2021, the unemployed population stood at 339.8 thousand people, having decreased by 3.6% (12.8 thousand) from June 2021, by 4.0% (14.2 thousand) from April 2021 and by 16.0% (64.9 thousand) from July 2020.

Similarly, the unemployment rate – which stood at 6.6% – decreased from the three periods under comparison: by 0.2 pp, 0.2 pp and 1.5 pp, respectively.

From June 2021, the youth unemployment rate (23.4%) has decreased by 2.0 pp, while the adults' unemployment rate (5.4%) has decreased by 0.1 pp.

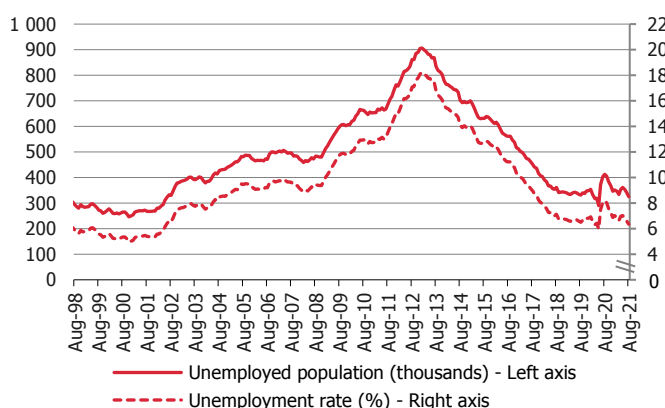
From the previous month, the youth unemployment rate (22.6%) has decreased by 0.8 pp, while the adults' unemployment rate (5.2%) has decreased by 0.2 pp.

D. Inactive population and inactivity rate

In July 2021, the inactive population was estimated at 2,512.8 thousand people, having decreased from the previous month (0.4%; 9.2 thousand), from three months before (3.6%; 94.0 thousand) and from the same month of 2020 (5.3%; 141.2 thousand).

Similar pattern was observed in the inactivity rate, which stood at 32.7%: down 0.1 pp from June 2021, down 1.3 pp from April 2021 and down 1.9 pp from July 2020.

Figure 3: Unemployed population and unemployment rate (seasonally adjusted data)

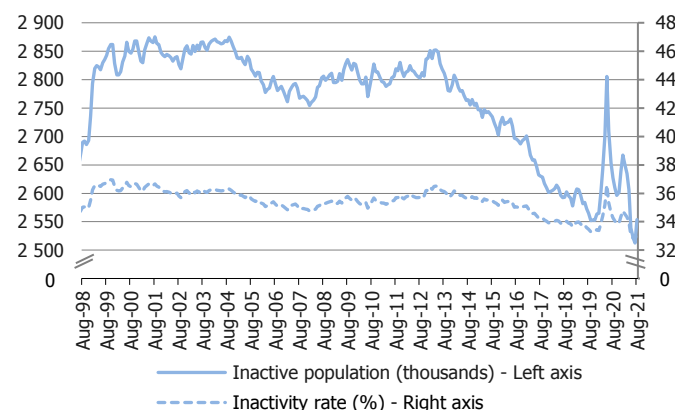


Note: The August 2021 estimates are provisional.

In August 2021, the unemployed population – estimated at 325.9 thousand people – has decreased by 4.1% (13.9 thousand) from the previous month, by 9.9% (35.7 thousand) from three months before and by 20.9% (86.3 thousand) from one year before.

The unemployment rate estimate was 6.4%, down 0.2 pp from the previous month, down 0.6 pp from May 2021 and down 1.8 pp from August 2020.

Figure 4: Inactive population and inactivity rate (seasonally adjusted data)



Note: The August 2021 estimates are provisional.

In August 2021, the inactive population (2,553.8 thousand people) was higher than that of the previous month (1.6%; 41.0 thousand) and than that of three months before (0.6%; 14.7 thousand) and lower than that of the same month of the year before (2.8%; 73.5 thousand).

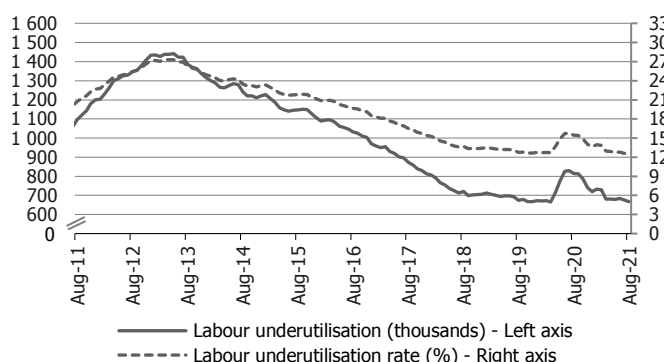
The inactivity rate, estimated at 33.3%, has also increased by 0.6 pp from the previous month and by 0.2 pp from three months before, having decreased by 1.0 pp from one year earlier.

E. Supplementary indicators to unemployment and the labour underutilisation

In July 2021, the labour underutilisation covered 675.0 thousand people, down from the previous month (1.4%; 9.3 thousand), from three months before (0.8%; 5.6 thousand) and from the same month of 2020 (18.6%; 154.3 thousand).

The labour underutilisation rate, estimated at 12.6%, has decreased from the three periods under comparison: by 0.2 pp, 0.33 pp and 3.1 pp, respectively.

Figure 5: Labour underutilisation and labour underutilisation rate
(seasonally adjusted data)



Note: The August 2021 estimates are provisional.

In August 2021, the labour underutilisation stood at 667.8 thousand people, which corresponds to a decrease of 1.1% (7.2 thousand) from July 2021, of 1.6% (10.8 thousand) from May 2021 and of 18.0% (146.2 thousand) from August 2020.

Similarly, the labour underutilisation rate stood at 12.6%, remaining unchanged from the previous month and decreased from both three months before (0.2 pp) and from a year earlier (2.9 pp).

F. Active, employed, unemployed and inactive population

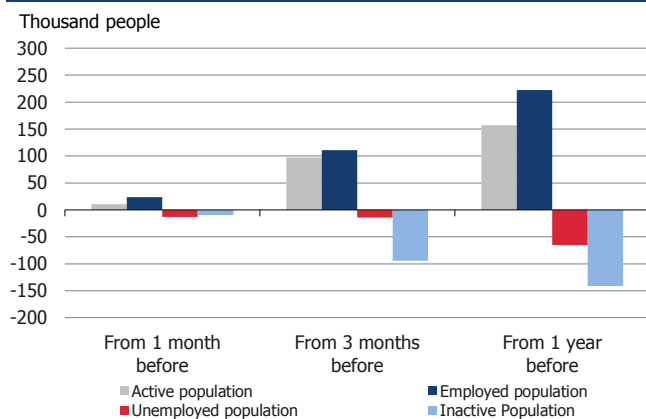
In summary, in July 2021, from the previous month, the active population has increased by 10.8 thousand, while the inactive population has decreased by 9.2 thousand³. The increase of the active population was due to the increase of the employed population (23.5 thousand) having surpassed the decrease of the unemployed population (12.8 thousand), while the inactive population decrease was mainly explained by the decrease in the number of inactive persons available to work but not seeking a job (7.9 thousand).

The increase of the active population compared to three months before (97.0 thousand) came from the increase of the employed population (111.1 thousand) being higher than the decrease of the unemployed population (14.2 thousand). In turn, the inactive population decrease of 94.0 thousand people was due, mainly, to the decrease in the number of other inactive persons not available and not seeking a job (77.4 thousand).

Finally, the active population increase (157.4 thousand) from July 2020 was followed by the increase of the employed population (222.2 thousand) and the decrease of the unemployed population (64.9 thousand). The inactive population has decreased by 141.2 thousand people, because of the decrease in the number of inactive persons available to work but not seeking a job (94.6 thousand).

³ The changes in the active population and in the inactive population are not necessarily symmetrical. They are also influenced by the total population change that results from the natural balance and the net migration.

Figure 6: Change in the active, employed, unemployed and inactive population in July 2021
(seasonally adjusted data)



Criteria used when classifying the population aged 16 to 74 by labour status

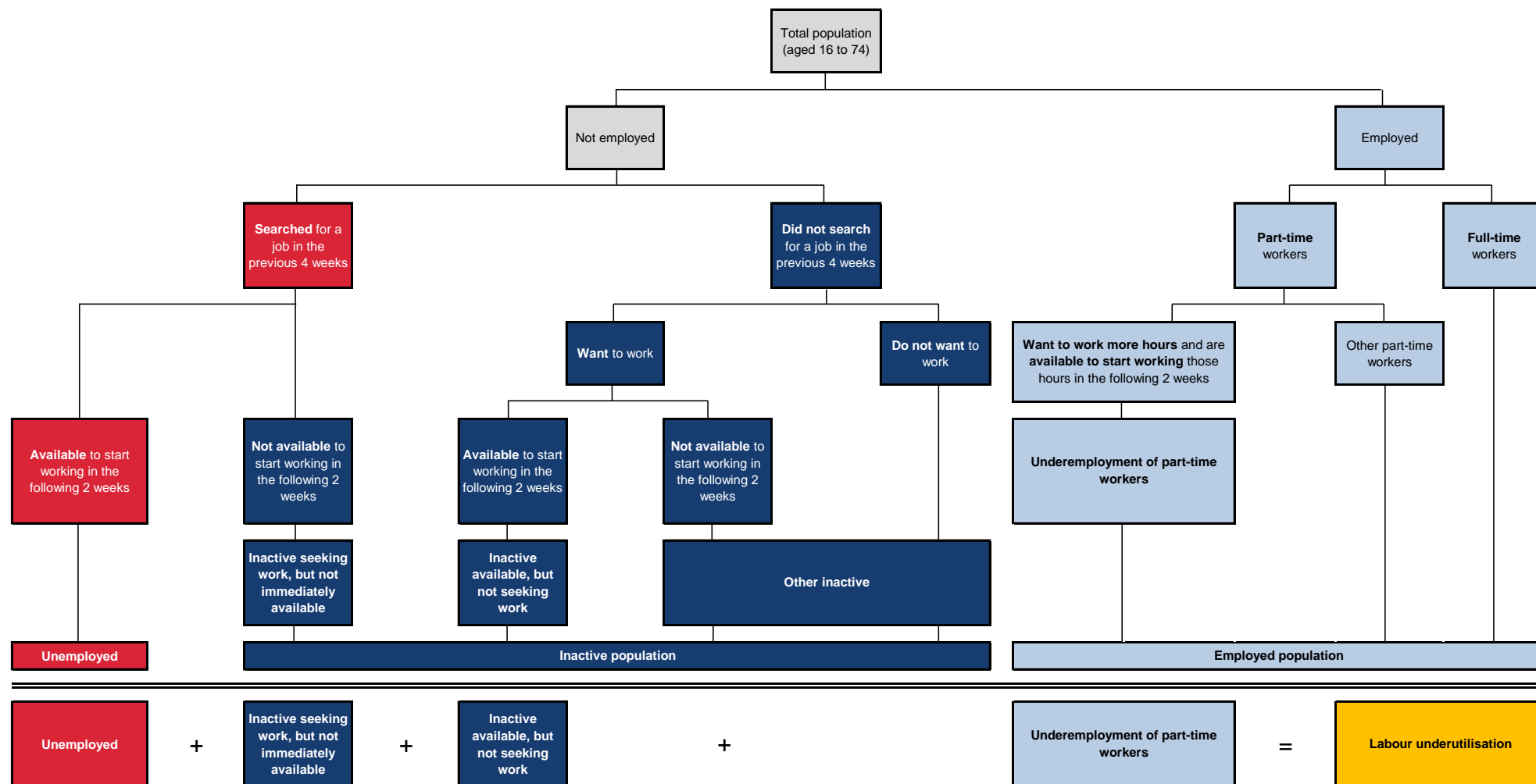


Table 1: Active population and active rate by sex and age group (16 to 74)

	Seasonally adjusted data					Not seasonally adjusted data				
	Aug 2020	May 2021	Jun 2021	Jul 2021	Aug 2021 (p)	Aug 2020	May 2021	Jun 2021	Jul 2021	Aug 2021 (p)
	Thousands									
Active population	5,034.4	5,138.6	5,155.8	5,166.6	5,124.8	5,040.1	5,129.3	5,158.1	5,172.3	5,133.9
Men	2,508.6	2,571.2	2,582.9	2,583.4	2,565.2	2,515.3	2,566.4	2,586.7	2,592.2	2,574.4
Women	2,525.8	2,567.4	2,572.9	2,583.1	2,559.6	2,524.9	2,563.0	2,571.4	2,580.1	2,559.4
Youth (aged 15 to 24)	322.9	346.3	346.8	338.6	331.3	332.8	333.1	340.5	340.4	341.9
Adults (aged 25 to 74)	4,711.6	4,792.3	4,809.0	4,827.9	4,793.5	4,707.3	4,796.2	4,817.6	4,831.9	4,791.9
	%									
Activity rate	65.7	66.9	67.2	67.3	66.7	65.8	66.8	67.2	67.4	66.9
Men	68.8	70.1	70.4	70.4	69.9	69.0	70.0	70.5	70.7	70.2
Women	62.9	64.0	64.2	64.4	63.8	62.9	63.9	64.1	64.3	63.8
Youth (aged 15 to 24)	33.0	34.9	34.9	34.1	33.4	34.0	33.6	34.3	34.3	34.4
Adults (aged 25 to 74)	70.5	71.7	71.9	72.2	71.7	70.4	71.7	72.1	72.3	71.7

Source: Statistics Portugal, Labour Force Survey.

Note: (p) - Provisional estimates.

Table 2: Employed population and employment rate by sex and age group (16 to 74)

	Seasonally adjusted data					Not seasonally adjusted data				
	Aug 2020	May 2021	Jun 2021	Jul 2021	Aug 2021 (p)	Aug 2020	May 2021	Jun 2021	Jul 2021	Aug 2021 (p)
	Thousands									
Employed population	4,622.2	4,777.0	4,803.2	4,826.7	4,798.9	4,636.7	4,783.6	4,827.9	4,851.7	4,814.3
Men	2,304.2	2,399.4	2,420.0	2,428.6	2,420.3	2,315.8	2,399.5	2,432.9	2,445.6	2,433.0
Women	2,318.0	2,377.5	2,383.2	2,398.1	2,378.6	2,320.8	2,384.2	2,395.0	2,406.1	2,381.4
Youth (aged 15 to 24)	236.8	257.8	258.6	259.5	256.5	245.2	254.2	262.2	266.6	265.7
Adults (aged 25 to 74)	4,385.4	4,519.2	4,544.5	4,567.2	4,542.4	4,391.4	4,529.4	4,565.6	4,585.1	4,548.6
	%									
Employment rate	60.3	62.2	62.6	62.9	62.5	60.5	62.3	62.9	63.2	62.7
Men	63.2	65.4	66.0	66.2	66.0	63.5	65.4	66.3	66.7	66.3
Women	57.7	59.3	59.4	59.8	59.3	57.8	59.4	59.7	60.0	59.4
Youth (aged 15 to 24)	24.2	26.0	26.1	26.1	25.8	25.1	25.6	26.4	26.9	26.8
Adults (aged 25 to 74)	65.6	67.6	68.0	68.3	67.9	65.7	67.8	68.3	68.6	68.0

Source: Statistics Portugal, Labour Force Survey.

Note: (p) - Provisional estimates.

Table 3: Unemployed population and unemployment rate by sex and age group (16 to 74)

	Seasonally adjusted data					Not seasonally adjusted data				
	Aug 2020	May 2021	Jun 2021	Jul 2021	Aug 2021 (p)	Aug 2020	May 2021	Jun 2021	Jul 2021	Aug 2021 (p)
	Thousands									
Unemployed population	412.2	361.6	352.6	339.8	325.9	403.5	345.7	330.2	320.6	319.5
Men	204.3	171.7	162.9	154.8	144.9	199.4	166.9	153.8	146.6	141.5
Women	207.8	189.9	189.7	185.0	181.0	204.0	178.8	176.4	174.0	178.0
Youth (aged 15 to 24)	86.1	88.5	88.1	79.1	74.8	87.6	78.9	78.3	73.8	76.2
Adults (aged 25 to 74)	326.1	273.1	264.5	260.7	251.1	315.9	266.8	252.0	246.8	243.3
	%									
Unemployment rate	8.2	7.0	6.8	6.6	6.4	8.0	6.7	6.4	6.2	6.2
Men	8.1	6.7	6.3	6.0	5.6	7.9	6.5	5.9	5.7	5.5
Women	8.2	7.4	7.4	7.2	7.1	8.1	7.0	6.9	6.7	7.0
Youth (aged 15 to 24)	26.7	25.6	25.4	23.4	22.6	26.3	23.7	23.0	21.7	22.3
Adults (aged 25 to 74)	6.9	5.7	5.5	5.4	5.2	6.7	5.6	5.2	5.1	5.1

Source: Statistics Portugal, Labour Force Survey.

Note: (p) - Provisional estimates.

Table 4: Inactive population and inactivity rate by sex and age group (16 to 74)

	Seasonally adjusted data					Not seasonally adjusted data				
	Aug 2020	May 2021	Jun 2021	Jul 2021	Aug 2021 (p)	Aug 2020	May 2021	Jun 2021	Jul 2021	Aug 2021 (p)
	Thousands									
Inactive population	2,627.3	2,539.1	2,522.0	2,512.8	2,553.8	2,621.6	2,548.3	2,519.7	2,507.1	2,544.8
Men	1,136.4	1,095.7	1,084.3	1,084.9	1,102.5	1,129.7	1,100.5	1,080.6	1,076.1	1,093.3
Women	1,490.9	1,443.3	1,437.7	1,427.9	1,451.3	1,491.9	1,447.8	1,439.1	1,430.9	1,451.4
Youth (aged 15 to 24)	654.6	646.2	645.8	654.3	661.4	644.6	659.4	652.0	652.5	650.7
Adults (aged 25 to 74)	1,972.8	1,892.8	1,876.2	1,858.5	1,892.5	1,977.0	1,888.9	1,867.7	1,854.6	1,894.0
	%									
Inactivity rate	34.3	33.1	32.8	32.7	33.3	34.2	33.2	32.8	32.6	33.1
Men	31.2	29.9	29.6	29.6	30.1	31.0	30.0	29.5	29.3	29.8
Women	37.1	36.0	35.8	35.6	36.2	37.1	36.1	35.9	35.7	36.2
Youth (aged 15 to 24)	67.0	65.1	65.1	65.9	66.6	66.0	66.4	65.7	65.7	65.6
Adults (aged 25 to 74)	29.5	28.3	28.1	27.8	28.3	29.6	28.3	27.9	27.7	28.3

Source: Statistics Portugal, Labour Force Survey.

Notes: (p) - Provisional estimates.

Table 5: Labour underutilisation and labour underutilisation rate (16 to 74)

	Seasonally adjusted data					Not seasonally adjusted data				
	Aug 2020	May 2021	Jun 2021	Jul 2021	Aug 2021 (p)	Aug 2020	May 2021	Jun 2021	Jul 2021	Aug 2021 (p)
	Thousands									
Labour underutilisation	814.0	678.6	684.3	675.0	667.8	804.4	654.2	652.3	649.4	656.1
Unemployed population	412.2	361.6	352.6	339.8	325.9	403.5	345.7	330.2	320.6	319.5
Underemployed part-time workers	170.6	136.3	146.5	153.8	163.3	152.8	135.8	140.7	142.3	146.3
Persons seeking work but not immediately available	17.7	24.2	30.9	34.8	30.0	17.7	24.2	30.9	34.8	30.0
Persons available to work but not seeking	213.6	156.5	154.4	146.5	148.6	230.4	148.4	150.6	151.7	160.4
	%									
Labour underutilisation rate	15.5	12.8	12.8	12.6	12.6	15.2	12.3	12.2	12.1	12.3

Source: Statistics Portugal, Labour Force Survey.

Notes: (p) - Provisional estimates.

TECHNICAL NOTE

Labour Force Survey

The main purpose of the Labour Force Survey is to characterise the population in terms of the labour market. It is a quarterly sample survey, addressed to families occupying the same dwelling in the national territory, which makes available quarterly and annual data.

Most of the characteristics observed in this survey report to the situation in one pre-defined week (from Monday to Sunday), known as reference week. The reference weeks are uniformly distributed throughout the quarters and years. The interviews usually take place in the week following the reference week.

The information is obtained directly, through computer-assisted interview, by using a mixed data collection mode: the initial interview is done face-to-face by an interviewer visiting the household and the other five interviews are done by telephone, if certain requirements are met.

Published data were calibrated by using the population estimates calculated from the final results of Census 2011.

Monthly Employment and Unemployment Estimates

In 2014, Statistics Portugal initiated a monthly release of Labour Force Survey estimates for the main labour market indicators in addition to the usual quarterly estimates releases.

With this initiative, Statistics Portugal intends to provide to users monthly updated information on labour market recent developments, allowing, at the same time, a more complete reading picture than that provided so far by Eurostat in its monthly releases of the unemployed population and unemployment rate estimates for Portugal. With this dissemination, Statistics Portugal satisfies also a specific requirement from the PEEIs (Principal European Economic Indicators).

Taking advantage of the continuous nature of the Labour Force Survey collection process, it is possible to monthly obtain estimates related to successive sets of three months (moving quarters), assuring consistency with the quarterly released estimates.

The monthly estimates refer to *centred* moving quarters, where the reference month (m) corresponds to the central month of each moving quarter. In fact, the reference month of each Press Release corresponds to the central month of the quarter composed by $m-1$, m and $m+1$ months. As a consequence, the monthly changes are calculated on values that contain common months. Therefore, the comparison of moving quarters without common months should be done in relation to reference months three months earlier.

The option for disseminating centred moving quarters series aimed at avoiding delays in the detection of turning points in the economic cycle that arise from the use of simple moving averages, but it implies that the estimates for the latest released moving quarter are provisional (see "Revisions" section below).

As estimates of centred moving quarters, the values (not seasonally adjusted) of the reference months February, May, August and November of each year correspond to the estimates of the 1st, 2nd, 3rd and 4th natural quarters, respectively, whose results are published and analysed with greater detail in the quarterly releases of the Labour Force Survey estimates.

The estimates for the last reference month are always provisional, as they correspond to a moving quarter where for the third month the data collection is not completed yet. In fact, for the first two months ($m-1$ and m) the data collection from the Labour Force Survey is already completed, while for the third month ($m+1$) only partially collected data are available.

In this context, in each monthly Press Release the provisional estimates for the reference month and the revised estimates for the previous months are published, due the availability of complete information for the last moving quarter.

(to be continued)

(continuation)

Information available

The data series selected for monthly releases refer to both employed and unemployed population, by sex and age group, and to the corresponding rates. In relation to these data series, it should be noted the following:

- Unless otherwise stated, the data series analysed in this Press Release are seasonally adjusted. For this reason, the analysis focuses on the comparison with the most recent periods. As agreed, Eurostat started using these estimates in its unemployment monthly releases. The original data series (not seasonally adjusted; as in the Statistics Portugal quarterly releases), are available in Tables of the annex.
- The indicators analysed in this Press Release were calculated for the age subgroup of those aged 16 to 74 (as in the Eurostat News Release), which differs from the criterion adopted at the Statistics Portugal quarterly releases (people aged 16 to 89, in line with the concepts in force of the International Labour Organization).

The back series for all the released and analysed indicators in this Press Release, since February 1998 (quarter from January to March 1998), are available at the Statistics Portugal website.

Due to rounding, totals may not correspond exactly to the sum of the parts.

Revisions

The monthly released data are subject to regular revisions, as previously mentioned. The revisions come from obtaining the final estimates for the previous reference month (moving quarter) due to the conclusion of its last month collection process. Therefore, in each Press Release the not seasonally adjusted final estimates for the previous reference month are published. In addition, are also presented the final estimates resulting from updating of the seasonally adjusted data series whenever a new observation is added.

Revision of July 2021 estimates (16 to 74) - main indicators -			
	Unit	Seasonally adjusted data	Not seasonally adjusted data
Active population		- 17.1	- 17.1
Employed population		- 16.0	- 16.0
Unemployed population	Thousands	- 1.2	- 1.1
Inactive population		17.1	17.2
Labour underutilisation		7.0	6.9
Employment rate		- 0.2	- 0.2
Unemployment rate		0.0	0.0
Men's unemployment rate		0.2	0.2
Women's unemployment rate	pp	- 0.2	- 0.2
Youth unemployment rate (16 to 24)		- 0.1	- 0.1
Adults' unemployment rate (25 to 74)		0.0	0.0
Labour underutilisation rate		0.1	0.1

(to be continued)

(continuation)

Some concepts

Unemployed: person aged 16 and 74 who during the reference period met simultaneously the following conditions:

- neither had a job nor was at work;
- had actively sought work, i.e. had actively searched for a paid or unpaid job during the specified period (reference period or the three previous weeks); and
- was available for a paid or unpaid job.

Employed: person aged 16 to 89 who, during the reference period, was in one of the following situations:

- worked for at least one hour for a wage or salary, in cash or in kind (including unpaid family work);
- had a formal attachment to his/her job but was not at work temporarily;
- was in early retirement, but working in the reference week.

Working age resident population: Resident population aged 16 to 89.

Active: person aged 16 to 89 who, during the reference period, furnish the supply of labour force for the production of economic goods and services (was employed or unemployed).

Labour force: population formed by all active persons.

Extended labour force: corresponds to the labour force enlarged by the inactive seeking work but not immediately available and the inactive available but not seeking work.

Labour underutilisation: indicator that aggregates the unemployed population, the underemployment of part-time workers, the inactive seeking work but not immediately available, and the inactive available but not seeking work.

Unemployment rate: rate that defines the relation between the unemployed population and the labour force.

$$U.R. (\%) = (\text{Unemployed population} / \text{Labour force}) \times 100$$

Employment rate: rate that defines the relation between the employed population and the working age population.

$$E.R. (\%) = (\text{Employed population} / \text{Working age population}) \times 100$$

Activity rate of the working age population: rate that defines the relation between the labour force and the working age population.

$$P.R. (\%) = (\text{Labour force} / \text{Working age population}) \times 100$$

Inactivity rate of the working age population: rate that defines the relation between the working age inactive population and the working age population.

$$P.R. (\%) = (\text{Working age inactive population} / \text{Working age population}) \times 100$$

Labour underutilisation rate: rate that defines the relation between the labour underutilisation and the extended labour force.

$$L.U.R. (\%) = (\text{Labour underutilisation} / \text{Extended labour force}) \times 100$$

(to be continued)

(continuation)

For the indicators selected for monthly dissemination, it was considered the age subgroup of those aged 16 to 74.

For a more detailed definition of the concepts and methodological features of this statistical operation, consult the [Labour Force Survey](#) or the [Monthly Employment and Unemployment Estimates](#) methodological documents (both only in Portuguese) available at the Statistics Portugal website.

Next Press Release:

2 November 2021: "Monthly Employment and Unemployment Statistics – September 2021".

3 November 2021: Eurostat News Release.