



November 19, 2021  
TRANSPORT ACTIVITIES  
Air Transport Flash Statistics  
September 2021

## DAILY AVERAGE OF DISEMBARKED PASSENGERS, IN SEPTEMBER, WAS TWICE THE VALUE IN THE SAME PERIOD OF 2020, BUT STILL AWAY FROM PRE-PANDEMIC VALUES

In **September 2021**, there was a movement of 3.6 million passengers at national airports and the movement of freight and mail totalled 16.8 thousand tonnes (+95.8% and +35.0%, vis-à-vis September 2020, respectively). Compared to September 2019, the movement of passengers at national airports decreased by 39.3% and the movement of freight and mail reduced by 5.2%.

Between **January and September 2021**, there was an increase of 3.6% in the number of passengers handled at national airports compared with the same period of 2020 (-67.3% in the same period of 2020; +6.9% in the same period of 2019). Compared to the same period of 2019, the reduction was 66.1%.

Between January and September 2021, France was the main country of origin and destination of flights, followed, with a significantly smaller volume of passengers, by the United Kingdom and Germany.

---

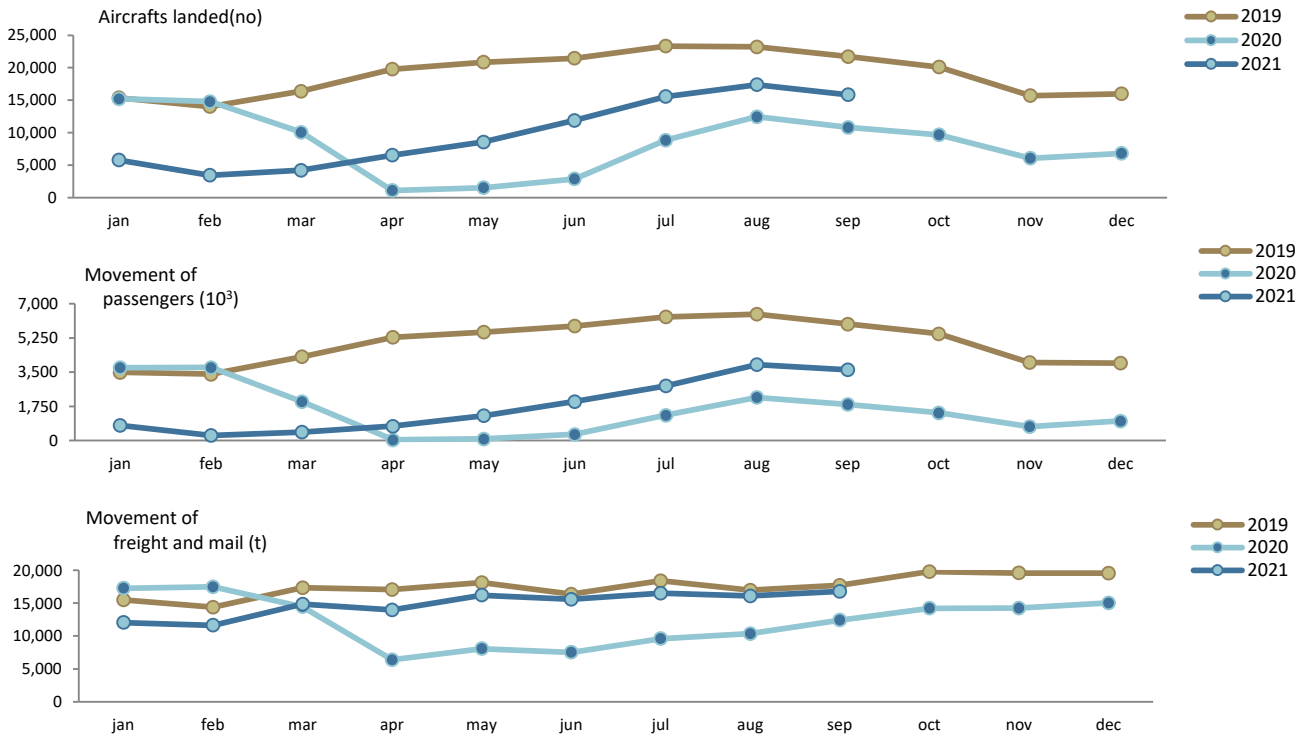
### Monthly traffic at national airports

In **September 2021**, 15.8 thousand commercial aircrafts landed at national airports, corresponding to 3.6 million passengers (embarked, disembarked and direct transits) and the movement of 16.8 thousand tonnes of freight and mail (recording growths of 46.4%, 95.8% and 35.0%, compared to September 2020, respectively).

Compared to September 2019, there were variations of -27.0% in the number of aircraft landed, -39.3% in the movement of passengers and -5.2% in the movement of freight and mail (-25.0%, -39.9% and -5.2% in August 2021 compared to the same month in 2019, by the same order).



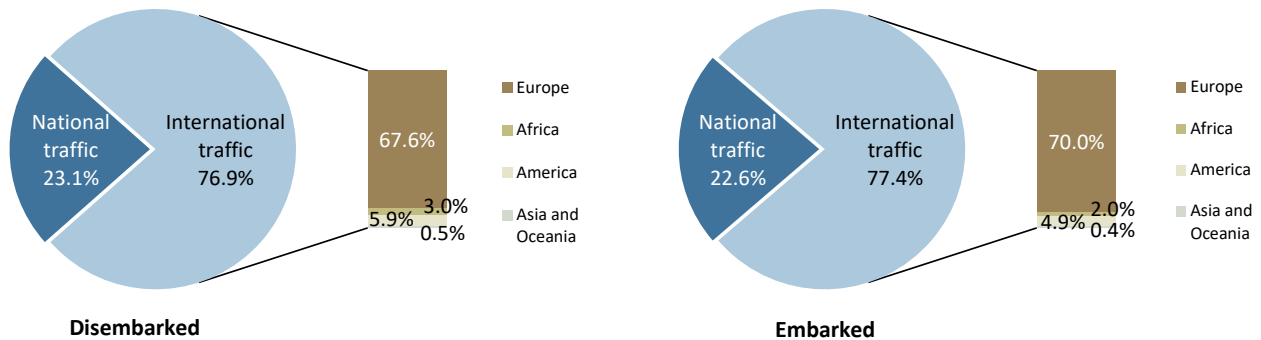
Figure 1. Aircrafts landed, passengers and freight/mail movement at national airports



Source: Survey to airports and aerodromes (ANA/ANAC/Statistics Portugal)

Considering the total number of passengers disembarked at national airports in September 2021, 76.9% corresponded to international traffic (76.0% in the same period last year), the majority coming from airports located at the European continent (67.6%). Regarding embarked passengers, 77.4% corresponded to international traffic (78.7% in the same period last year), with the main destination being airports located at the European continent (70.0%).

Figure 2. Proportion of passengers disembarked and embarked at national airports by nature of traffic – September 2021

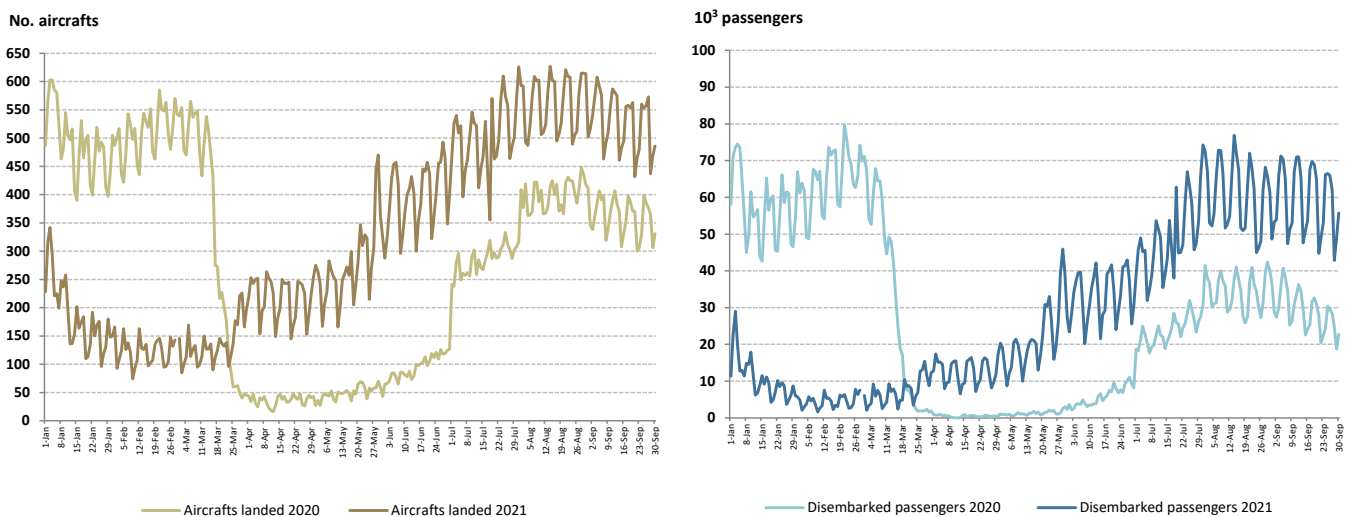


Source: Survey to airports and aerodromes (ANA/ANAC/Statistics Portugal)



Comparing the number of aircrafts landed and the number of passengers daily disembarked between January and September 2021 with the same period of 2020, in the second half of March, which, in year-on-year terms, coincides with the beginning of the restrictions adopted at the airspace level due to the COVID-19 pandemic, specifically in the last days of this month, there is an inversion of the trend with a growth of both indicators, and remained during the following months. After the second half of May there was a significant increase, with an upward trend being maintained in the following months. In September 2021, there was a slight reduction compared to the previous month, with a daily average of disembarked passengers of 59 thousand passengers at all national airports (60 thousand in August), representing twice the value registered in the same month of 2020, but still away from the value recorded in September 2019 (98 thousand).

Figure 3. Aircrafts landed and disembarked passengers at national airports – daily



Source: Survey to airports and aerodromes (ANA/ANAC/Statistics Portugal)

### Accumulated traffic at national airports

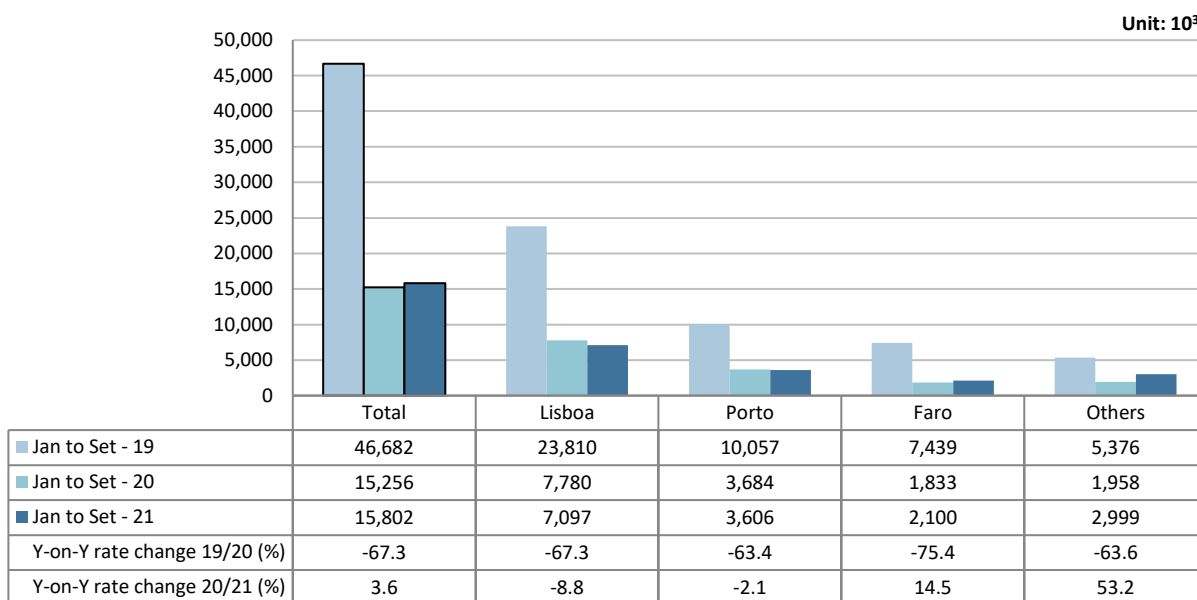
Between **January and September 2021**, there was an increase of 3.6% in the number of passengers handled at national airports - compared with the same period of 2020 (-67.3% in the same period of 2020; +6.9% in the same period of 2019). Compared to the same period of 2019, the reduction was 66.1%.

In this period, the movement of passengers in Lisboa airport corresponded to 44.9% of total handled passengers (7.1 million) and decreased by 8.8%. In the opposite direction, Faro airport registered an increase of 14.5% in the movement of passengers in this period (2.1 million), although is still far from the recorded value in the same period of 2019 (7.4 million passengers, -71.8%).



# DIÍSTAQUE

Figure 4. Movement of passengers at national airports



Source: Survey to airports and aerodromes (ANA/ANAC/Statistics Portugal)

Considering the volume of passengers disembarked and embarked on international flights between January and September 2021, France was the main country of origin and destination of flights, recording increases of +3,0% in the number of disembarked passengers and +1,5% in the number of embarked passengers compared to the same period of 2020. With a significantly smaller volume of disembarked and embarked passengers, the United Kingdom came in second position and Germany in the third position, recording, in both cases, negative growth rates vis-à-vis the same period of 2020.

Figure 5. Three main countries of origin and destination of flights with passengers at national airports

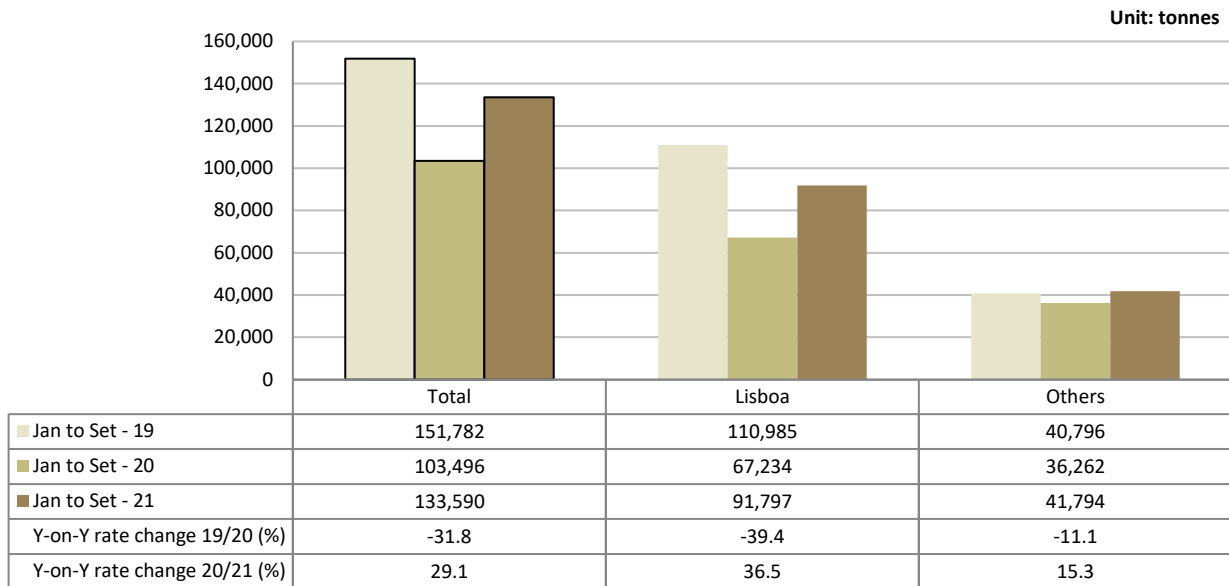
Ranking	Country of origin (of the flight)	Jan to Sep - 2021		Ranking	Country of destination (of the flight)	Jan to Sep - 2021	
		Passengers disembarked (10 <sup>3</sup> )	Y-on-Y growth rate (%)			Passengers embarked (10 <sup>3</sup> )	Y-on-Y growth rate (%)
1	France	1,196	3.0	1	France	1,187	1.5
2	United Kingdom	745	-19.8	2	United Kingdom	715	-25.5
3	Germany	588	-17.4	3	Germany	557	-24.7

Source: Survey to airports and aerodromes (ANA/ANAC/Statistics Portugal)

Between January and September 2021, there was an increase of 29.1% in freight and mail handled at national airports (-31.8% in 2020). Compared to the same period in 2019, there was a decrease of 12.0%. The movement of freight and mail at Lisboa airport represented 68.7% of the total, corresponding to 91.8 thousand tonnes (+36.5% compared with the same period of the previous year). The aggregate of other airports increased by 15.3%.



Figure 6. Freight and mail movement at national airports



Source: Survey to airports and aerodromes (ANA/ANAC/Statistics Portugal)

#### METHODOLOGICAL NOTES

In this Press Release the following statistical data are used:

2019: definitive results;

2020: provisional results;

2021: January to September preliminary results.



**Main national airports** (considered in this Press Release as national airports): Lisboa, Porto, Faro, Ponta Delgada, Funchal, Porto Santo, Beja, Horta, Flores, Santa Maria, Terceira (Lajes), Pico, Graciosa, São Jorge, Corvo, Portimão, Bragança, Cascais and Viseu.

Note: Vila Real remains closed.

**SOURCES:** Survey to airports and aerodromes (ANA/ANAC/Statistics Portugal)

#### MAIN CONCEPTS:

**Commercial aviation** - Air transport flight performed for the public transport of passengers, freight or mail, for remuneration and for hire.

**Commercial air traffic** - Movement of aircrafts, passengers, freight and mail in commercial aviation.

#### Monthly indicators at Statistics Portugal portal:

[Aircrafts landed \(No.\) in airports by Geographic localization, Type of traffic and Nature of traffic; Monthly](#)

[Aircrafts landed \(No.\) in airports by Continent of origin; Monthly](#)

[Aircrafts unglued \(No.\) in airports by Geographic localization, Type of traffic and Nature of traffic; Monthly](#)

[Disembarked passengers \(No.\) in airports by Geographic localization, Type of traffic and Nature of traffic; Monthly](#)

[Disembarked passengers \(No.\) in Airports by Continent of origin; Monthly](#)

[Embarked passengers \(No.\) in airports by Geographic localization, Type of traffic and Nature of traffic; Monthly](#)

[Embarked passengers \(No.\) in airports by Destination continent; Monthly](#)

[Passengers in direct transit \(No.\) in airports by Geographic localization, Type of traffic and Nature of traffic; Monthly](#)

[Disembarked load \(t\) in airports by Geographic localization, Type of traffic and Nature of traffic; Monthly](#)

[Embarked load \(t\) in airports by Geographic localization, Type of traffic and Nature of traffic; Monthly](#)

[Disembarked mail \(t\) in airports by Geographic localization, Type of traffic and Nature of traffic; Monthly](#)

[Embarked mail \(t\) in airports by Geographic localization, Type of traffic and Nature of traffic; Monthly](#)

#### ACRONYMS AND DESIGNATIONS

ANA	Portugal Airports, S.A.
ANAC	National Civil Aviation Authority
INE	Statistics Portugal

---

**Next Press Release “Air Transport Flash Statistics”** – December 21, 2021

**Next Press Release “Transport activities” (3<sup>rd</sup> Q 2021)** - December 3, 2021

---