



11 January 2022

INDICES OF PRODUCTION, EMPLOYMENT AND WAGES IN CONSTRUCTION

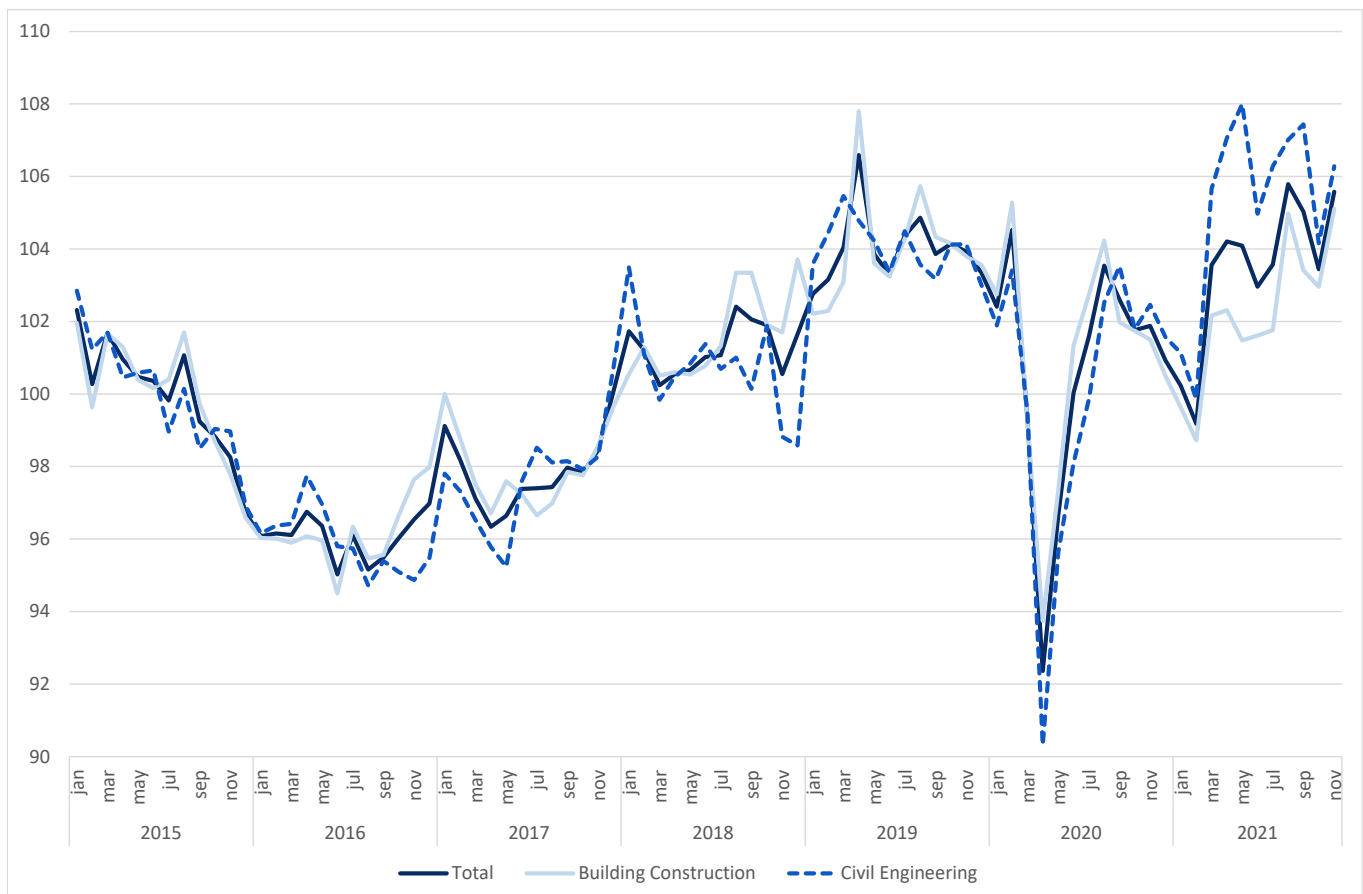
November 2021

CONSTRUCTION PRODUCTION INDEX GREW UP TO 2.6%

The index of production in construction increased 2.6% in year-on-year terms, in November (3 months moving average, working days and seasonally adjusted), up by 0.5 percentage points from October.

Employment and wages and salaries grew 1.7% and 9.6% (1.7% and 6.5% in the previous month), respectively.

Figure 1. Indices of Production in Construction (2015=100)



Next press release – February 11th 2022