

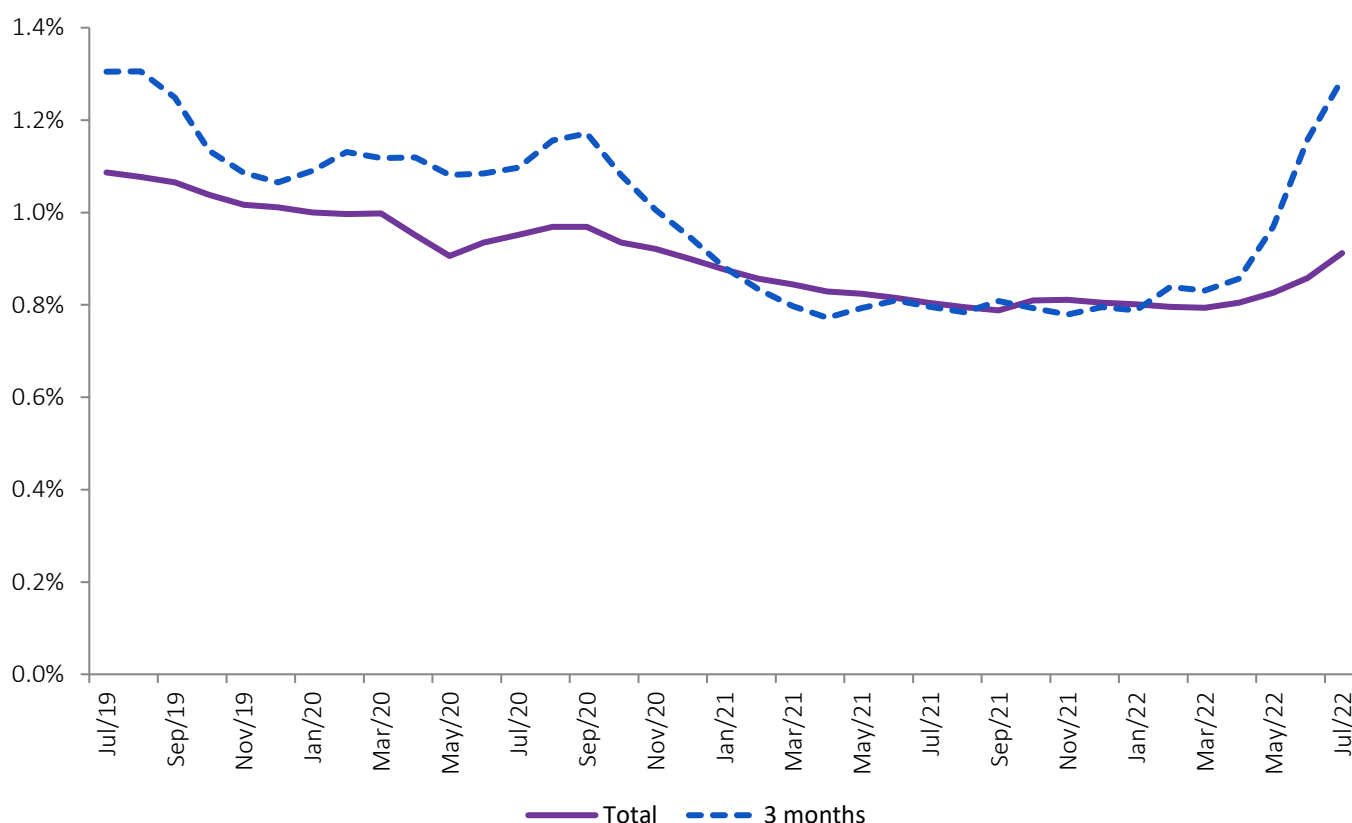


18 August 2022  
IMPLICIT INTEREST RATES IN HOUSING  
July 2022

## INTEREST RATE INCREASED TO 0.912% WHILE OWED CAPITAL AND MONTHLY LOANS REPAYMENTS STOOD AT 60,405 EUROS AND 264 EUROS, RESPECTIVELY

The implicit interest rate for all housing loan agreements increased from 0.858% in June to 0.912% in July. For the contracts that were closed in the previous three months, the interest rate increased from 1.158% to 1.289%. The average value of owed capital increased 344 Euros, reaching 60,405 Euros. The average value of loan repayments increased 3 euros to 264 Euros.

Figure 1. Implicit interest rates in housing loans



The implicit interest rates, average owed capital and monthly loan repayment figures can be found in the next table.



## IMPLICIT INTEREST RATES IN HOUSING

Monthly Average				
Period	Total	from which Housing	3 months	
			from which Housing	Acquisition
	Acquisition	Acquisition		
Implicit interest rates in housing loans (%)				
Jul/21	0.804%	0.821%	0.796%	0.791%
Aug/21	0.795%	0.811%	0.784%	0.772%
Sep/21	0.788%	0.804%	0.808%	0.804%
Oct/21	0.810%	0.827%	0.793%	0.785%
Nov/21	0.811%	0.825%	0.779%	0.766%
Dec/21	0.805%	0.820%	0.795%	0.790%
Jan/22	0.801%	0.816%	0.788%	0.788%
Feb/22	0.796%	0.811%	0.839%	0.833%
Mar/22	0.794%	0.809%	0.831%	0.826%
Apr/22	0.805%	0.820%	0.857%	0.852%
May/22	0.826%	0.841%	0.970%	0.966%
Jun/22	0.858%	0.874%	1.158%	1.163%
Jul/22	0.912%	0.928%	1.289%	1.295%
Average of owed capital (Euros)				
Jul/21	56,361	63,253	116,532	127,443
Aug/21	56,746	63,698	118,348	129,995
Sep/21	56,979	63,927	120,778	130,793
Oct/21	57,190	64,174	119,401	129,267
Nov/21	57,736	65,069	117,964	128,737
Dec/21	57,864	65,158	120,608	130,902
Jan/22	58,159	65,509	123,617	134,026
Feb/22	58,383	65,759	122,450	131,681
Mar/22	58,723	66,120	123,529	134,527
Apr/22	59,242	66,671	125,411	136,499
May/22	59,614	67,080	126,620	137,944
Jun/22	60,061	67,560	127,051	136,724
Jul/22	60,405	67,923	127,678	137,424
Loan repayments (Euros)				
Jul/21	235	255	349	390
Aug/21	236	256	351	391
Sep/21	237	257	364	401
Oct/21	251	273	359	392
Nov/21	253	277	358	393
Dec/21	253	277	371	409
Jan/22	254	278	358	397
Feb/22	255	278	378	413
Mar/22	255	279	375	414
Apr/22	257	281	387	427
May/22	260	284	391	432
Jun/22	261	286	409	447
Jul/22	264	288	425	462

Date of the next press release - September 20th 2022