



INSTITUTO NACIONAL DE ESTATÍSTICA
STATISTICS PORTUGAL

press release

DIÍSTAQUE

January 12th 2023

INDICES OF PRODUCTION, EMPLOYMENT AND WAGES IN CONSTRUCTION

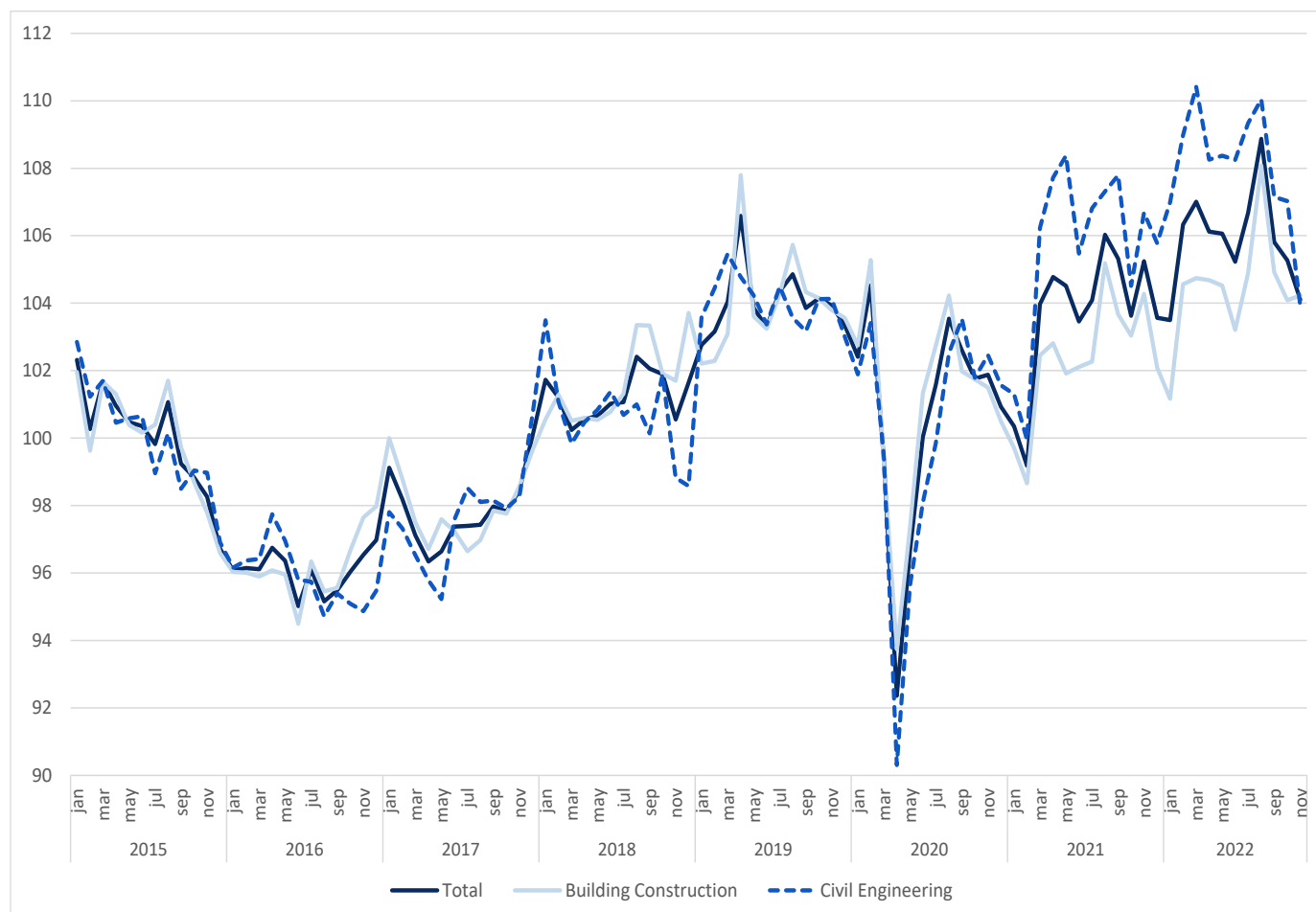
November 2022

CONSTRUCTION PRODUCTION SLOWED DOWN TO 0.3%

The index of production in construction increased 0.3% in November in year-on-year terms (3 months moving average, working days and seasonally adjusted), down by 1.3 percentage points from October.

Employment and wages and salaries grew 1.9% and 2.9% (2.0% and 4.5% in the previous month), respectively.

Figure 1. Indices of Production in Construction (2015=100)



Next press release – February 10th 2023

Indices of Production, Employment and Wages in Construction – November 2022