



15 September 2023  
VITAL STATISTICS – Monthly data  
August 2023

*Page 2, 1<sup>st</sup> paragraph, 2<sup>nd</sup> line: where it was “... the increase in the number of deaths was greater (198 more deaths; +2.1%) ...”, now it is “... the increase in the number of deaths was lower (198 more deaths; +2.1%) ...”.  
(18<sup>th</sup> September 2023 -11h00m)*

## DEATHS, LIVE BIRTHS AND MARRIAGES

### NUMBER OF DEATHS INCREASES 8.8% COMPARED TO THE PREVIOUS MONTH AND 2.1% COMPARED TO THE SAME MONTH OF 2022

In August 2023, the number of deaths was 9,493, higher than the number registered in July 2023 (766 more deaths; +8.8%) and in August 2022 (198 more deaths; +2.1%). In that month, the number of deaths due to COVID-19 increased to 226 (86 more deaths than in July 2023), accounting for 2.4% of all deaths. Compared to August 2022, there was a decrease of 10 deaths due to COVID-19.

In July 2023, 7,318 children were born alive, corresponding to an increase of 5.2% (365 more) compared to June 2023, but to a decrease of 0.3% compared to July 2022 (7,337). The total number of live births registered in the first seven months of 2023 (48,673) was higher than the value observed in the same period of 2022 (46,590), representing 2,083 more live births (+4.5%).

In July 2023, the natural balance was -1,384, improving in relation to the previous month (-1,839) and the same month of 2022, when it reached -3,388. In the first seven months of 2023, the cumulative value of the natural balance was -20,534, corresponding to an improvement from the value registered in the same period of 2022 (-28,047).

In July 2023, 4,577 marriages were celebrated, higher than the number registered in June 2023 (749 more; +19.6%), but lower than the number of marriages held in July 2022 (381 less marriages; -7.7%). In the first seven months of 2023, 19,486 marriages were celebrated, 556 more (+2.9%) than in the same period of 2022.

In this press release, Statistics Portugal provides **preliminary data** on the number of deaths per month until August 2023<sup>1</sup>, and the number of live births and marriages per month until July 2023, that occurred in the national territory. The indicators published and analyzed in this Press Release are available on the Official Statistics Portal ([www.ine.pt](http://www.ine.pt)), with geographical breakdowns NUTS 2 and NUTS 3. The hyperlinks to these statistics can be found in the Excel file published together with this Press Release. The information is obtained from the Sistema Integrado do Registo e Identificação Civil (SIRIC) until September 8<sup>th</sup>, 2023. The data presented regarding the number of deaths due to COVID-19, whose source is the report “Number of New Cases and Deaths Per Day” of the Directorate-General for Health, were extracted on September 11<sup>th</sup>, 2023.

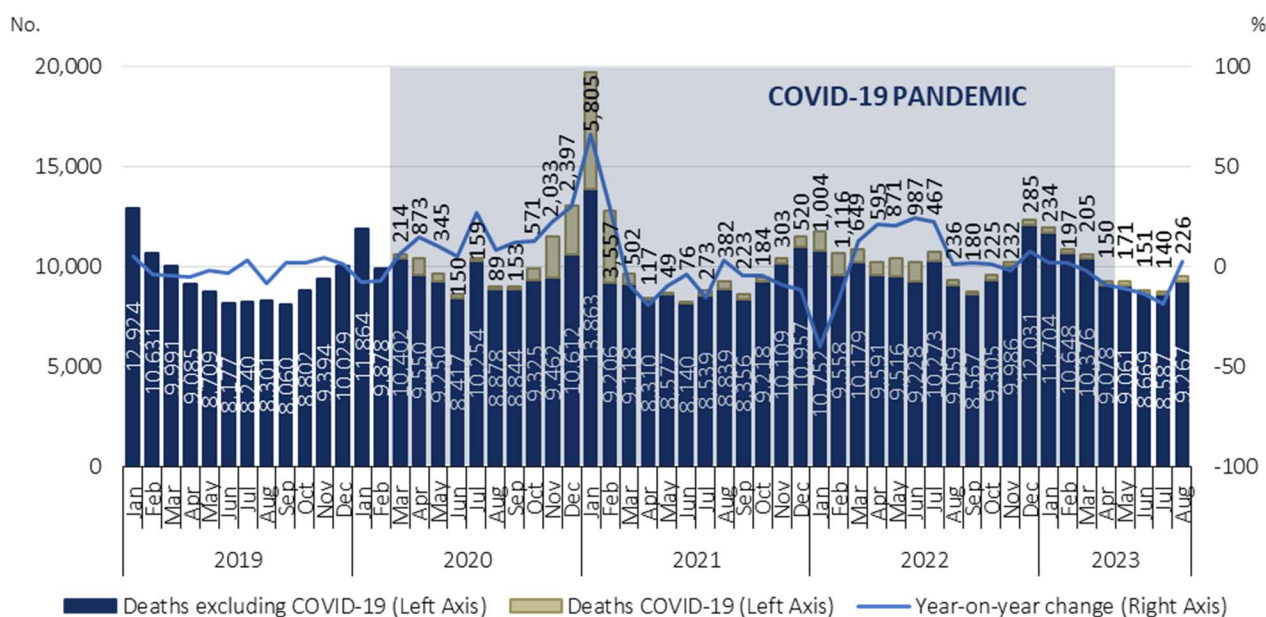
<sup>1</sup> After the release of mortality data for 2022 and considering the decrease of the impact of deaths due to COVID-19 on mortality, the analysis regarding the number of deaths per week was suspended. However, the release of indicators regarding the number of weekly deaths, by NUTS 3 breakdown, until the 35<sup>th</sup> week of 2023, and daily deaths, by NUTS 2 breakdown, until September 3<sup>rd</sup>, 2023, is assured.



In August 2023, mortality increased 2.1% when compared to the same month of 2022

In August 2023, there were 9,493 deaths, 766 more than in the previous month. Compared to the same month of 2022, the increase in the number of deaths was lower (198 more deaths; +2.1%). The number of deaths due to COVID-19 increased to 226 (86 more than in July 2023), accounting for 2.4% of all deaths. Compared to August 2022, there was a decrease of 10 deaths (-4.2%) due to COVID-19.

Figure 1. Deaths and year-on-year change, January 2019 to August 2023<sup>2</sup>

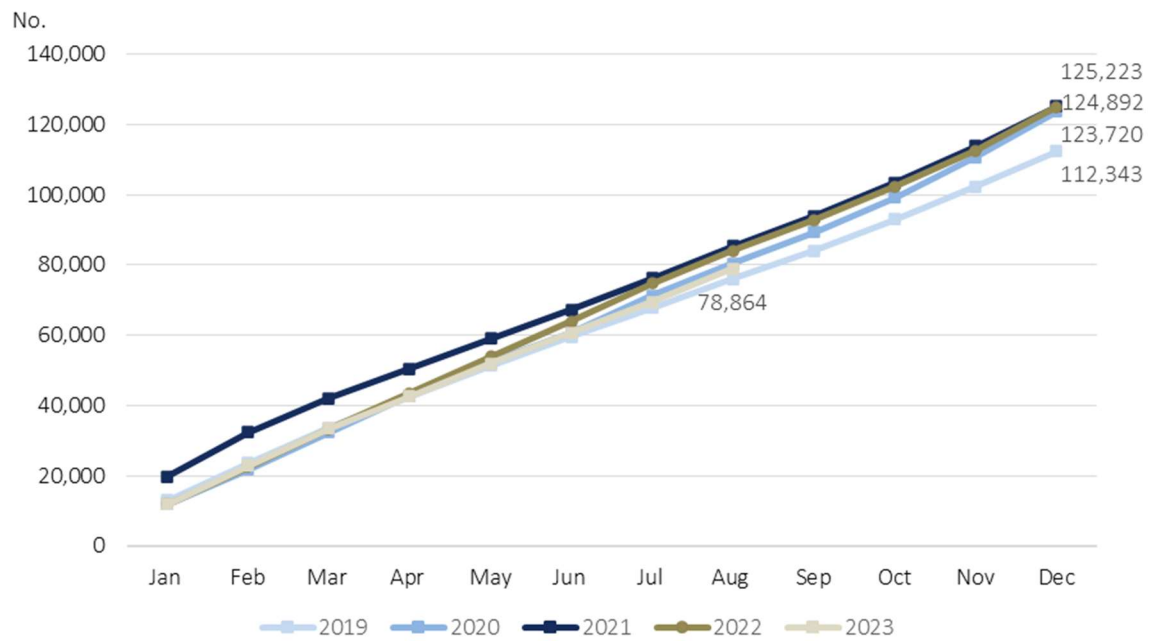


Source: Statistics Portugal, Deaths. Directorate-General of Health, [Number of New Cases and Deaths Per Day](#) (extracted on 11/09/2023).

<sup>2</sup> The World Health Organization (WHO) declared, on May 5<sup>th</sup>, the end of the global health emergency for COVID-19, accepting the recommendation of the emergency committee.

The number of deaths registered in the first eight months of 2023 (78,864) was lower than the value registered in the same period of 2022 (5,217 less deaths; -6.2%).

Figure 2. Monthly deaths (cumulative values), 2019 to 2023



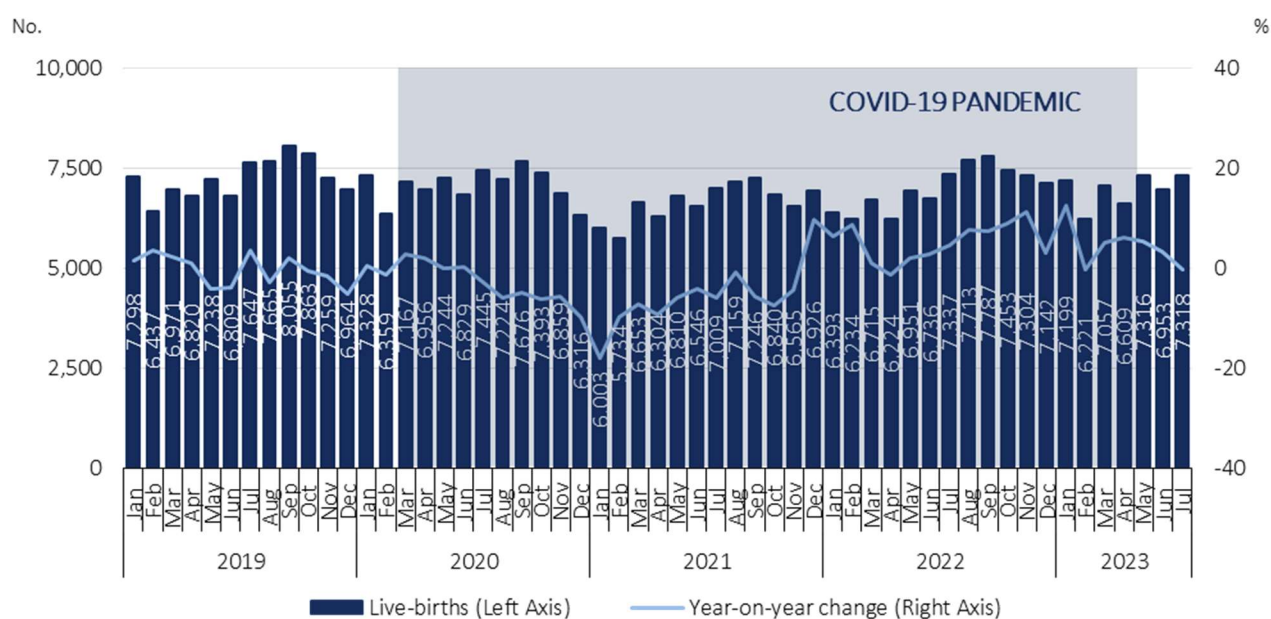
Source: Statistics Portugal, Deaths.



In July 2023, the number of live births decreased 0.3% compared to July 2022

In July 2023, 7,318 children were born alive, corresponding to an increase of 5.2% (365 more) compared to June 2023, but to a decrease of 0.3% (19 less) compared to the same month of 2022.

Figure 3 Live births and year-on-year change, January 2019 to July 2023<sup>3</sup>



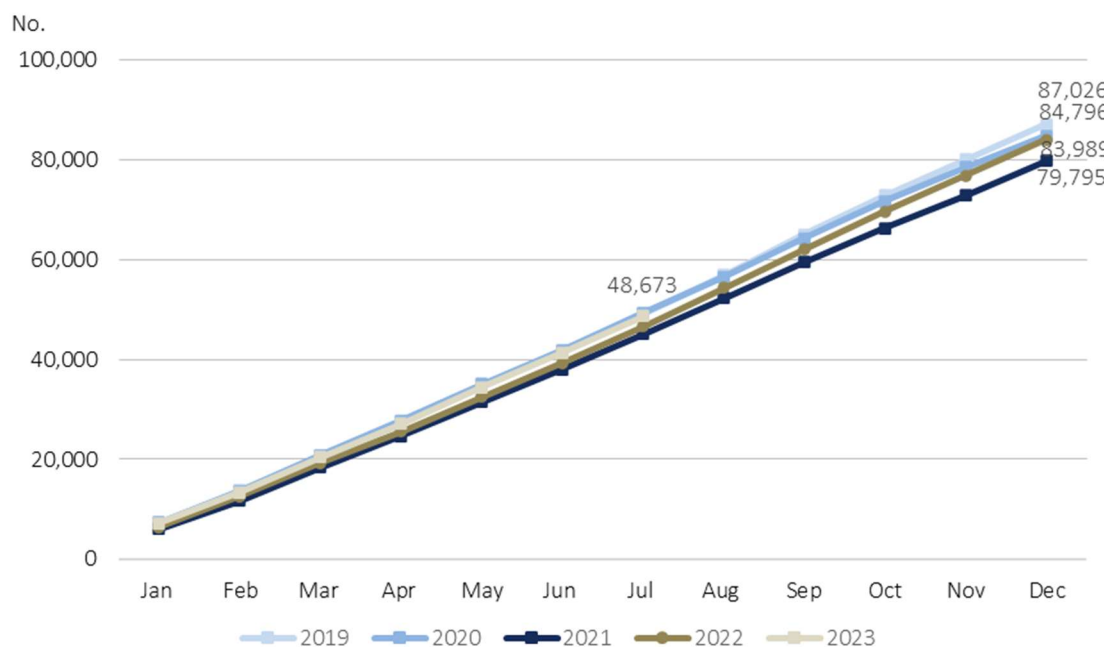
Source: Statistics Portugal, Live births.

The total number of live births registered in the first seven months of 2023 (48,673) was higher than that observed in 2022 (46,590), a further 2,083 live births (+4.5%).

<sup>3</sup> The World Health Organization (WHO) declared, on May 5<sup>th</sup>, the end of the global health emergency for COVID-19, accepting the recommendation of the emergency committee.



Figure 4. Monthly live births (cumulative values), 2019 to 2023



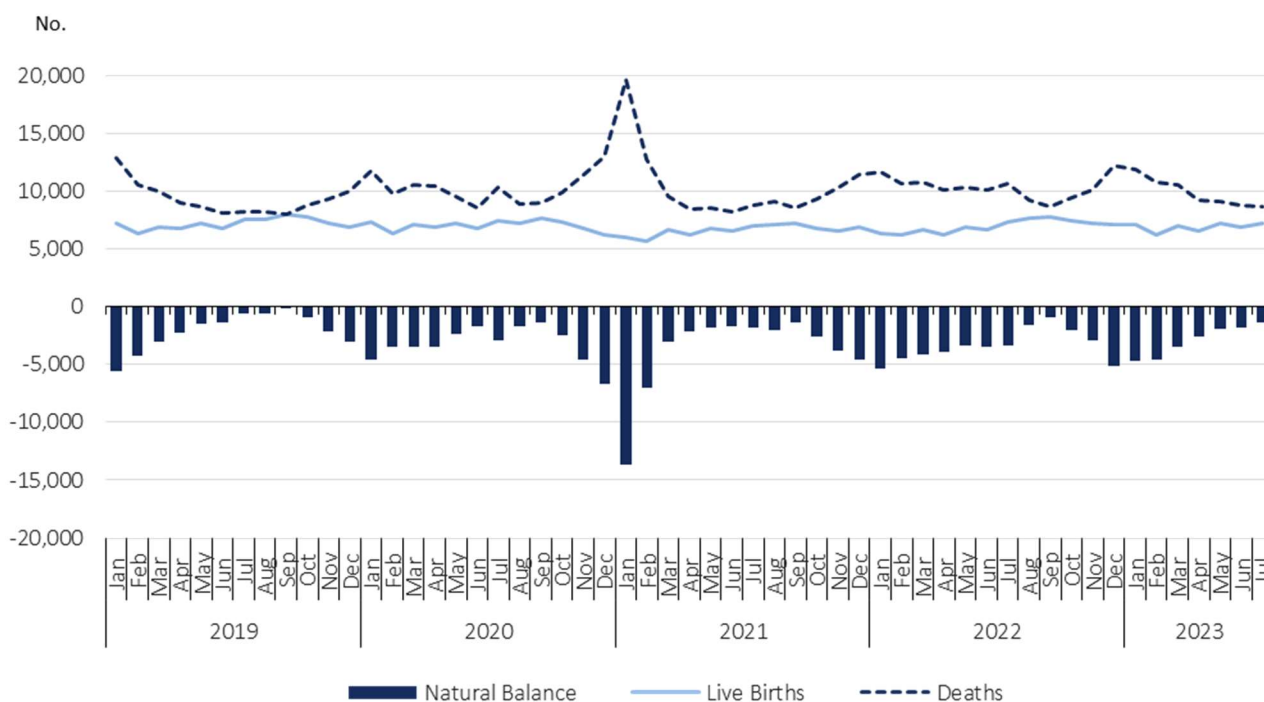
Source: Statistics Portugal, Live births.



In July 2023, the natural balance was -1,384

In July 2023, the natural balance registered the value of -1,384, improving compared to the value registered in June 2023 (-1,839) and in the same month of 2022 (-3,388).

Figure 5. Live births, deaths, and natural balance<sup>4</sup>, Portugal, January 2019 to July 2023

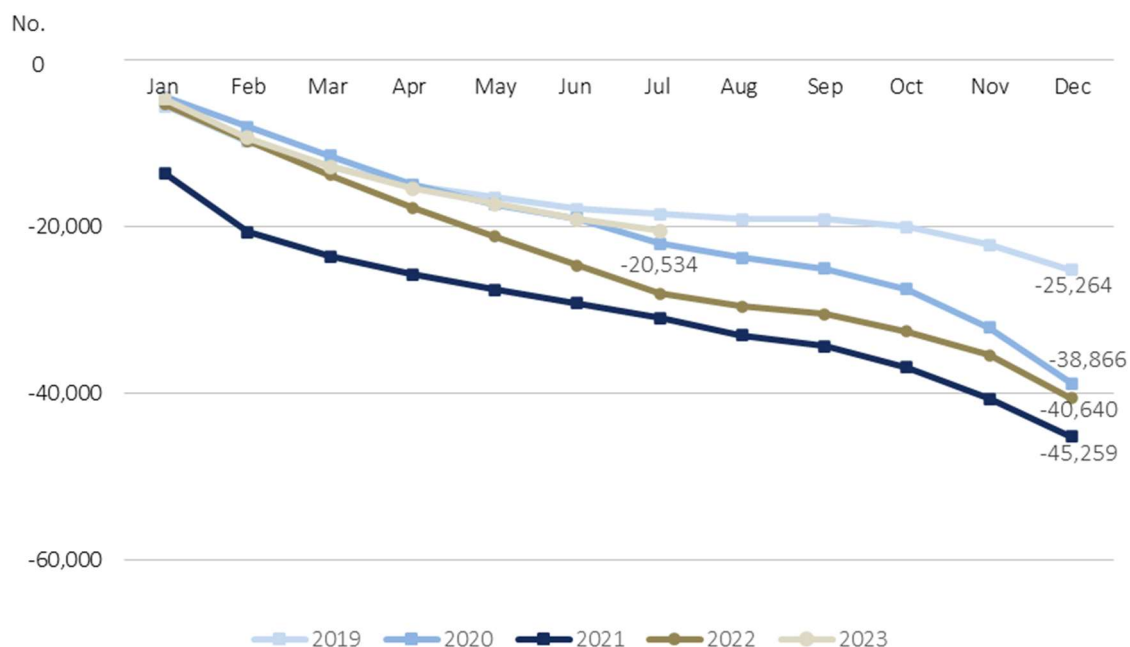


Source: Statistics Portugal, Live births, Deaths, and Demographic indicators.

In the first seven months of 2023, the cumulative value of the natural balance was -20,534, improving from the same period of 2022 (-28,047).

<sup>4</sup> The natural balance is calculated based on the number of live births of mothers residing in Portugal and the number of deaths of residents in Portugal.

Figure 6. Monthly natural balance (cumulative values), 2019 to 2023



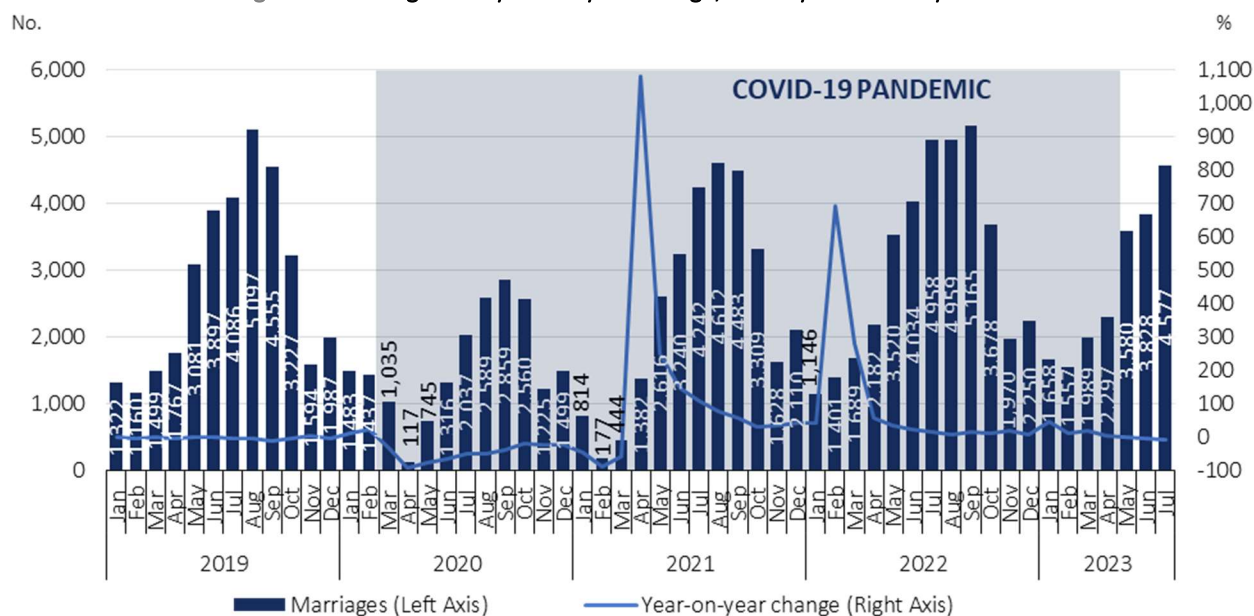
Source: Statistics Portugal, Live births, Deaths, and Demographic indicators.

In July 2023, the number of celebrated marriages decreased 7.7% compared to July 2022

In July 2023, 4,577 marriages were celebrated, higher than the number registered in June 2023 (749 more; +19.6%), but lower than the number of marriages held in July 2022 (381 less marriages; -7.7%).

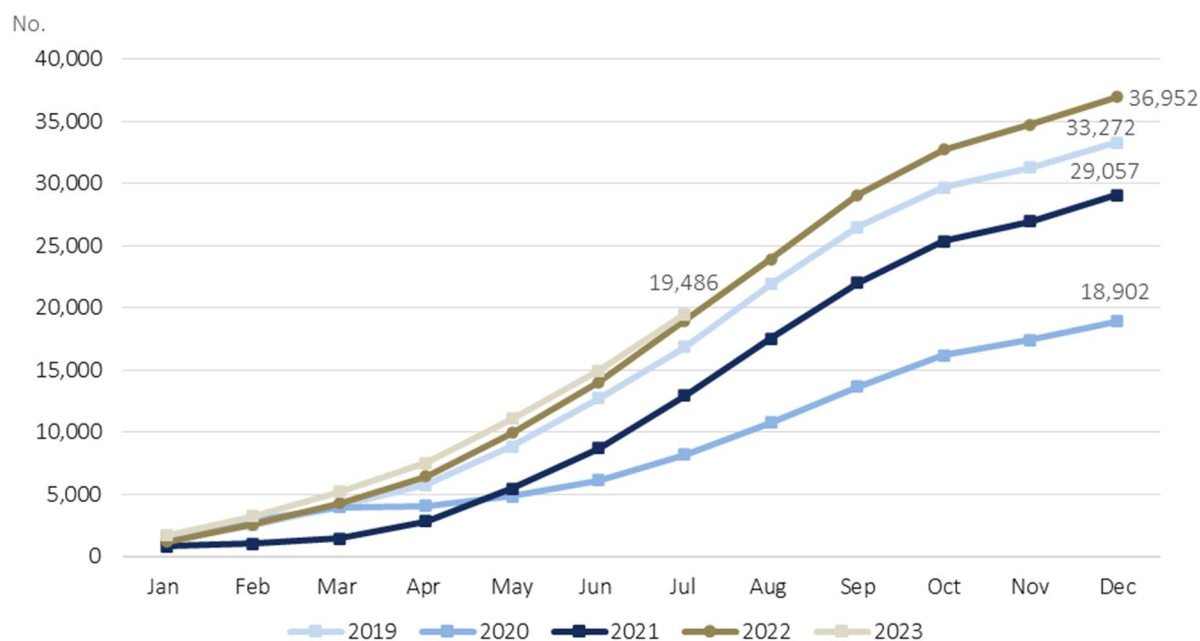
In the first seven months of 2023, 19,486 marriages were celebrated, 556 more (+2.9%) than in the same period of 2022.

Figure 7. Marriages and year-on-year change, January 1919 to July 2023<sup>5</sup>



Source: Statistics Portugal, Marriages.

Figure 8. Monthly marriages (cumulative values), 2019 to 2023



Source: Statistics Portugal, Marriages.

<sup>5</sup> The World Health Organization (WHO) declared, on May 5<sup>th</sup>, the end of the global health emergency for COVID-19, accepting the recommendation of the emergency committee.





---

## TECHNICAL NOTE

Statistics Portugal releases the **preliminary** monthly **numbers** of deaths, live births, and marriages based on the information registered in the Civil Register Offices until September 8<sup>th</sup>, 2023. Indicators on the preliminary monthly number of live births, deaths, and marriages, from January to July 2023, with geographical breakdowns up to NUTS 3, as well as weekly number of deaths, until the 35<sup>th</sup> week 2023, by NUTS 3 and daily number of deaths, until September 3<sup>rd</sup>, 2023, by NUTS 2 are made available on the Statistics Portugal Website.

Data are obtained from statistical operations of direct and exhaustive collection on live births, deaths and marriages in Portuguese territory using facts that are subject to compulsory civil registration (birth and death) in the Sistema Integrado do Registo e Identificação Civil (SIRIC).

In addition to administrative information obtained from Civil Register Offices, Statistics Portugal collects an additional set of variables identified as statistically pertinent to the National Statistic System (NSS) and the European Statistical System (EES). Data is recorded and sent electronically, in compliance with the requirements set out by Statistics Portugal and laid down in liaison with the Instituto de Registos e Notariado (IRN) and the Instituto de Gestão Financeira e Equipamentos da Justiça (IGFEJ).

Data on the number of deaths due to COVID-19 are also used, whose source is the “Number of New Cases and Deaths Per Day” Report of the Directorate-General for Health.

## DEFINITIONS

**Marriage:** Contract signed by two persons that intend to start a family in full partnership and cohabitation according to legislation. Note: marriage can be held between persons from different or same sex.

**Live birth:** This is the complete expulsion or extraction from the mother's body, irrespective of the duration of the pregnancy, of a product of fertilization that, after separation, breathes or shows any other signs of life, such as a beating of the heart or umbilical cord or actual contraction of any muscle subject to voluntary movement, whether the umbilical cord has been severed and whether the placenta is retained.

**Death:** The permanent disappearance of vital functions.

**Natural balance:** The difference between the number of live births and the number of deaths during a given period.

**Year-on-year change:** The year-on-year change compares the level of a variable between the reference month and the same month of the previous year.

---

Detailed methodological information available at: [www.ine.pt](http://www.ine.pt), option Products, Metadata system.

Detailed statistical information available at: [www.ine.pt](http://www.ine.pt), option Products, Statistical data, database, theme Population, subtheme Births and natality rates and subtheme Mortality and life expectancy.



---

#### Next Press Release

13<sup>th</sup> October 2023: “Vital Statistics - Monthly data – September 2023”.

---